



Trams to Newhaven

Project Newsletter



Construction Updates

Trams are scheduled to be operational in Leith and Newhaven by Spring 2023. To date 96% of track slab has been laid (over 4,400m), over 8,500 metres of communication and utility ducting has been installed. Main construction works are complete on five new tram stops at Constitution Street, McDonald Road, Ocean Terminal, Balfour Street, and Foot of the Walk and progressing well at the Port of Leith stop. We've also installed 136 OLE poles, 64% of the total along the route, and over 4,300m of drainage infrastructure.

Main construction works for the project are scheduled to be completed during 2022 with trams operational in Spring 2023. Localised works continue on carriage and footways throughout the route to install tram systems infrastructure, tram stop fit outs, the installation of overhead line equipment, street lighting, landscaping, and traffic signalling.

Associated traffic management and pedestrian diversions will be set up as required with any changes being communicated via the project's communication channels.

Please note there may be instances of emergency works being undertaken by utility providers on the route which are not project related.

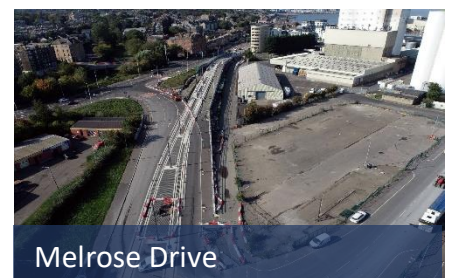
Out of hours

There is a section on the project website that details planned out of hours working over the coming weeks.

Newhaven to Melrose Drive

Fit out works, including the shelter and benches, on the tram stop are continuing.

Works continue on the north footway at Newhaven. There have been changes to pedestrian arrangements in this area to allow tram stop works to progress. An access route is provided through our works and back onto the footway for all users.



Melrose Drive



Ocean Drive



Stevedore Place



Leith Walk

Melrose Drive

Track works are now complete in this area.

There have been adjustments to pedestrian and vehicle routes to allow hard landscaping works to commence.

Ocean Terminal

Hard landscaping works continue on the eastern carriageway heading south towards the Holiday Inn. Fence lines have been removed from the north side of Ocean Drive following completion of main infrastructure works.

On Wednesday 26 October 2022 there will be alterations made to the traffic management arrangements at Ocean Terminal south roundabout with no right-hand turn access from Ocean Drive to Victoria Quay. To gain vehicle access to Victoria Quay, the turn back at the north of Ocean Drive at Ocean Terminal is available. These arrangements are scheduled to remain in place for two weeks.

In addition, from Monday 24 and Tuesday 25 October 2022 there will be minor traffic management changes at the north side of Ocean Drive at Ocean Terminal to accommodate installation of system infrastructure works. Please note these works will be carried out during nightshift works between the hours of 7pm and 5am with bus diversions in place. Access for vehicles will be maintained.

Rennie's Isle to Tower Place

OLE foundation works have commenced on the south side of Ocean Drive by the Queen's Quay Development. Properties directly affected have been notified. Upon completion of the OLE works, hard landscaping and surfacing works will commence.

Stevedore Place

Track and tram stop works are complete. Surfacing works will be ongoing within the area.

Further pedestrian and traffic management arrangements have taken place. This requires traffic to use the full north side carriageway to allow OLE, cable pulling and surfacing works on the south footpath and carriageway to take place.

There will be out of hours working required within this section to undertake cable pulling and OLE works.

Constitution Place to Baltic Street

Attenuation pipe works at Tower Street have commenced and are scheduled to be completed during November 2022.

This will be completed in two phases with pedestrian access and resident parking maintained. Phase two is now in place.

On completion setts will be reinstated with localised traffic management.

Cable pulling as part of the system infrastructure works continues, which may require parking restrictions to be installed. These will be highlighted with on-street signage. In addition, out of hours working may be required within the area which will be updated on the project's website. Surfacing works between the casino building and the entrance to Tower Street Industrial Estate has been postponed due to resourcing issues. Further updates will be issued in due course.

Baltic Street to Queen Charlotte Street

Cable pulling as part of the system infrastructure works is ongoing. Parking restrictions have been installed within the parking bay on the east side of Constitution Street, between Mitchell Street and Queen Charlotte Street from Monday 10 October 2022 for approximately four weeks.

Queen Charlotte Street to Coatfield Lane

The Queen Charlotte Street junction is open for east / west bound traffic.

Cable pulling as part of the system infrastructure works is ongoing.

The one remaining OLE base has been excavated adjacent to The Chop House to allow the required water and power diversions to take place. The water diversion has been completed and the power diversion is due for completion week commencing 24 October 2022 to enable the OLE base to be poured. Final hard landscaping works will then commence.

Coatfield Lane to Foot of the Walk (FoTW)

Works on the South Leith Parish Church (SLPC) wall are ongoing with scaffolding erected. There have been minor changes to pedestrian routes between Laurie Street and FoTW with a pedestrian walkway being moved on to the track on the west side of Constitution Street. Localised access to businesses on the east side of Constitution Street has been maintained.

Leith Walk

With street lighting now incorporated into the OLE poles in the central reservation, the project is now disconnecting and removing the existing lampposts along Leith Walk.

These works are progressing northbound.

Cycle Lane

To accommodate the above works, both cycleways on Leith Walk remain closed and diversion routes are in place.

Foot of the Walk to Manderston Street

To further accommodate the progression of project works on Leith Walk and at Foot of the Walk, traffic management arrangements will be amended over the next two weekends. These arrangements are expected to be in place until December 2022.

The key points to note are:

- During Phase One (22 and 23 October 2022) site arrangements will move from east to west between Foot of the Walk and Crown Place.
- The Manderston Street / Leith Walk junction remains open to traffic travelling from Easter Road to Leith Walk. Vehicles will only be allowed to turn left onto Leith Walk heading towards the city centre.
- The left-hand turn from Duke Street onto Leith Walk will be re-introduced.
- There will be no access to Manderston Street from Leith Walk.
- Traffic will continue to be able to turn right from Great Junction Street onto Leith Walk.
- Traffic movements between Great Junction Street and Duke Street heading both ways will remain under two-way traffic management.
- Site lines will be extended on Duke Street heading east. The pedestrian crossing point will remain in place, however, will move throughout the phasing of these works to accommodate associated works.
- The pedestrian crossing point on Great Junction Street will be temporarily reinstated, however, will move throughout the phasing of these works to accommodate associated works.
- Alternative diversions will be in place which will be signposted.
- During Phase Two (scheduled 29 and 30 October 2022) site arrangements will move from the east side of Leith Walk to the west side of Leith Walk, between Crown Place to Jane Street. Pedestrian access to properties will remain in place at all times.

Jane Street to Balfour Street

Drainage and hard landscaping works are progressing on the east side of Leith Walk between 165 Leith Walk and Jameson Place.

There will be adjustments to site lines at Smiths Place and Jameson Place from week commencing 24 October 2022. Vehicle and pedestrian access to properties will be maintained. In order to

complete hard landscaping works the temporary pedestrian crossing points may change as works progress.

Balfour Street to Pilrig Street

Main construction is now completed and the majority of heras fencing has been removed from Pilrig Street to Jameson Place.

Traffic heading south is now crossing over from the west side to the east side of Leith Walk, north of the Balfour Street junction. Vehicles will continue to be able to exit Balfour Street and turn right heading south.

Please note, the carriageway on the west side from Pilrig Street to Balfour Street will close to vehicles with access to Arthur Street via Balfour Street or Pilrig Street.

Pilrig Street to Annandale / Montgomery Street

The Brunswick Street / Leith Walk junction remains closed until further notice.

The direction of the traffic flow on Brunswick Road has been changed to allow a west to east movement from McDonald Road from 4am - 7pm while the above works are being progressed.

York Place to London Road

Annandale Street to Picardy Place southbound road closure

On 24 October 2022 there will be changes to the traffic management arrangements on the southbound section of Leith Walk between Annandale Street and Picardy Place to allow final surfacing and lining works to take place.

This will involve a closure of the southbound carriageway for approximately three weeks from the Picardy Place turnback to Annandale Street, including the full junction at London Road. The Picardy Place turnback will remain operational throughout the duration of these works.

Please note that during these works the project's standard working hours will be extended on Saturdays and Sundays. Hours of work will be from 8am to 5pm.

There will be diversion signage installed in the local area to inform road users of the recommended route. The main diversion route for southbound cyclists will be Annandale Street, East London Street, Broughton Street, Albany Street, Abercromby Place.

There are two diversion routes for city bound vehicles Great Junction Street, Duke Street, Easter Road, Abbeyhill, Regent Road, Waterloo Place, Leith Street. These are:

- Great Junction Street, Duke Street, Easter Road, Abbeyhill, Regent Road, Waterloo Place, Leith Street.
- Leith Walk, Pilrig Street, Bonnington Road, Broughton Road, Canonmills, Dundas Street, Queen Street.

Vehicles will also be able to head east via McDonald Road onto Brunswick Road. There will be three-way temporary traffic lights installed at the Brunswick Road / Easter Road junction and suspension of parking to facilitate traffic movement in the area. Details of Lothian Buses diversions will be listed on their website.

The northbound carriageway will reopen to all vehicles from Picardy Place to Pilrig Street over the weekend of 22/23 October 2022. In addition, the Union Street / Leith Walk junction and both junctions at Gayfield Square / Leith Walk will reopen. Please note that all these junctions will now be continuous footways. In addition, the entrance to Gayfield Square via East London Street will revert to no access. In addition, hard landscaping works will continue between Gayfield Square and Union Street with works moving in towards the building lines. Businesses in the area have been notified directly.

Support for Businesses

A support for Business package, including Open for Business campaigns, a Business Continuity Fund, and a voucher scheme through Itison is available to businesses on the route. More information can be found on the project website.