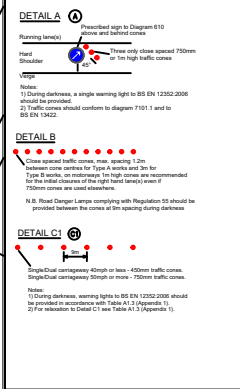


CHAPTER 8 T.S.M DETAILS



DRAWING DETAILS

- SIGN
- MASS BARRIER OR CONES
- WORKS AREA
- PARKING RESTRICTION

NOTES :-

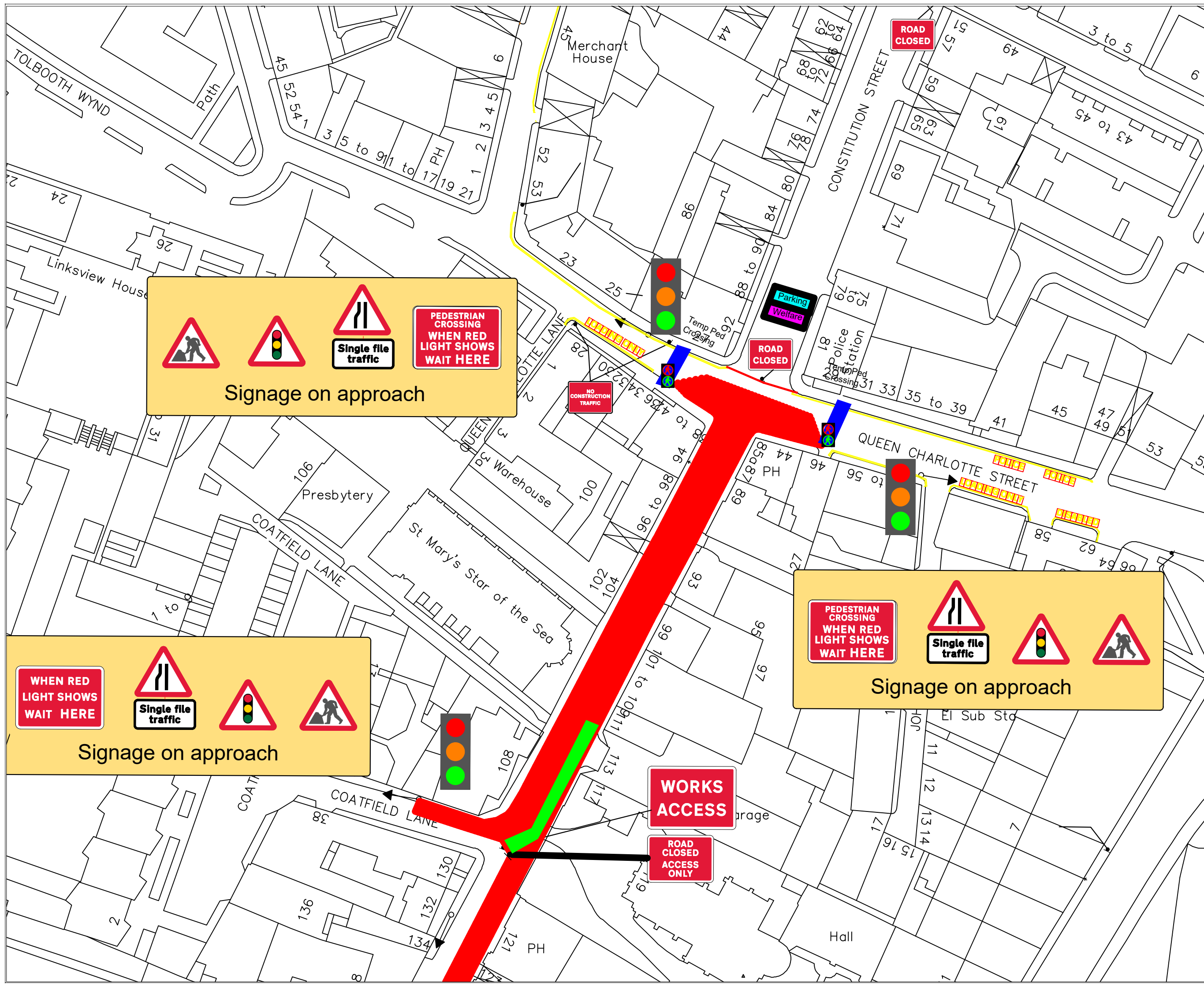
MARITIME STREET TO REMAIN OPEN AS AN EMERGENCY VEHICLE ACCESS ROUTE

DRAWING STATUS : FOR REVIEW

Rev	Date	Revision	Rev By	App By

Class One Traffic Management Ltd.
 Class One House
 Seabegs Road,
 Bonnybridge,
 FK4 2AQ
 Tel : 01324 810222
 Fax : 01324 810444
 www.classone.org
 mail@classone.org

Drawn By : SP	Checked By : SP
Scale : N.T.S	Date : 13/02/21
Main Contractor: MUS	
Location: Constitution Street - Coatfield Lane to Queen Charlotte Street	
Traffic Management Arrangement : Road Closure and Diversion including 2 Way Lights	
Drawing No : EYTN-MUS-7XX-07-DR-X-0001 Queen Charlotte St - Lane Flip	A0
Revision :	



Signage on approach

Signage on approach

Signage on approach