

# Craigmillar and Peffermill Court Refurbishment

## Feedback Form

### Introduction

As part of the proposed refurbishment to the blocks which will help to make homes warmer, cheaper to heat and better insulated. We want to hear from you on what issues you are currently facing in your home.

Earlier this month we published the first newsletter outlining the proposals for the blocks and how you can give your feedback on the design in consultations.

### What are we asking you to do?

To help us better understand any issues you are experiencing we are asking you to inform us of issues such as damp, mould or condensation. Please use the floorplan on the next page to mark on with a pen where the issues are located within your flat. There is also a section to provide further explanations below the floorplan. The more information you provide us with, the easier it will be for us to establish what is causing the issues.

Once you have completed the form, please hand it into the concierge office at Peffermill Court or bring this with you to the consultation on Monday 13<sup>th</sup> February at 5.30pm in the North East Locality Office.

### Further Opportunity to Help

We are also looking for volunteers within the blocks to allow us access to view the issues you are experiencing.

If you would be willing to provide us access to your home, please send your details to us using the email address below or add them to this form and hand it to the concierge team at Peffermill Court.

### Contact Us

We have a dedicated email address for any further queries relating to the proposed refurbishment. Please get in touch with us at [whr.feedback@edinburgh.gov.uk](mailto:whr.feedback@edinburgh.gov.uk)

### Translation



HAPPY TO TRANSLATE

If you would like the leaflet in another format such as Braille, large print or translation, please contact the Interpretation and Translation Service email [its@edinburgh.gov.uk](mailto:its@edinburgh.gov.uk) quoting reference 23-8306.

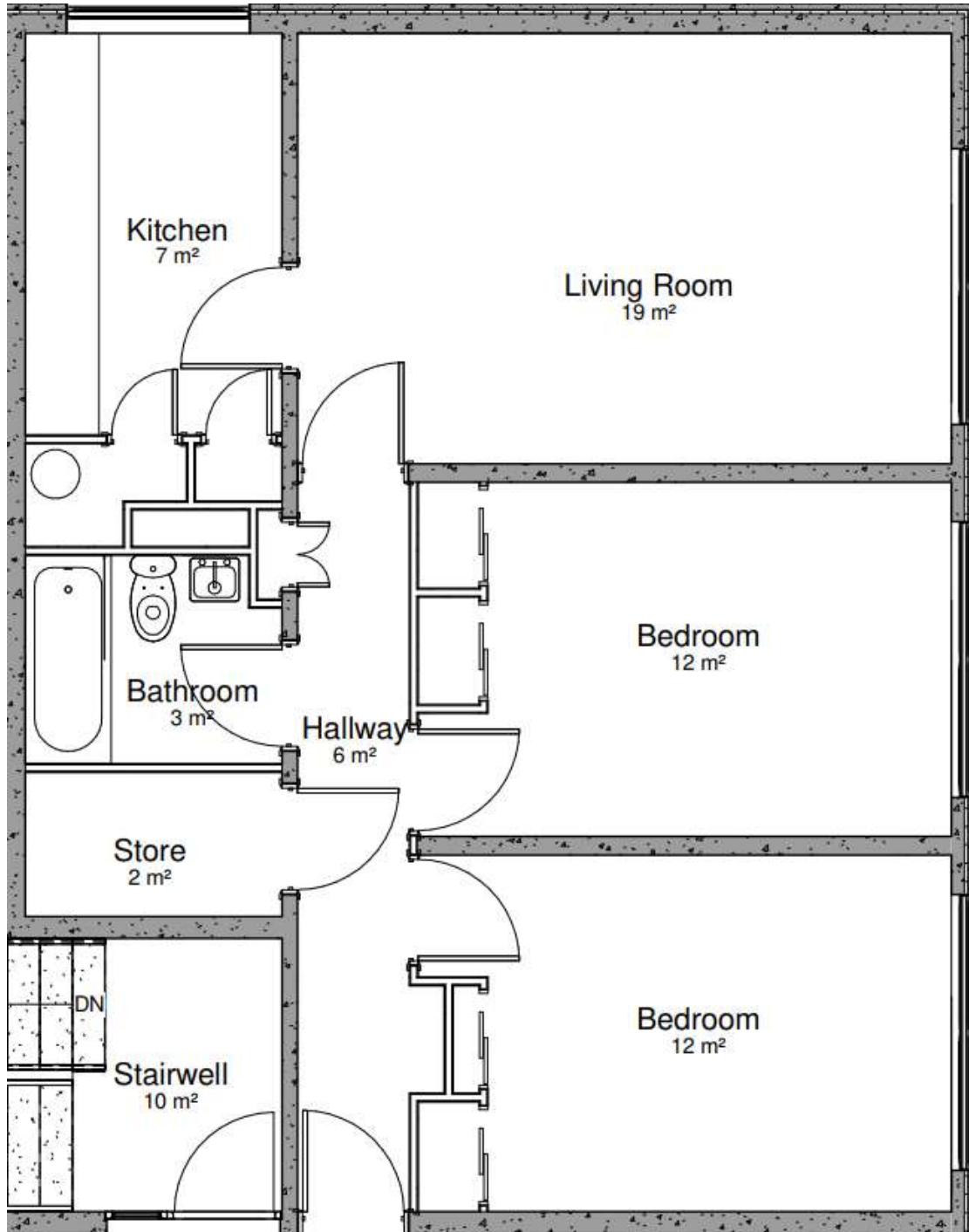
## Instructions for Feedback

Please use the relevant floorplan on the next pages to mark on any issues you may be experiencing such as damp, mould, condensation or cold spots/draughts within your flat.

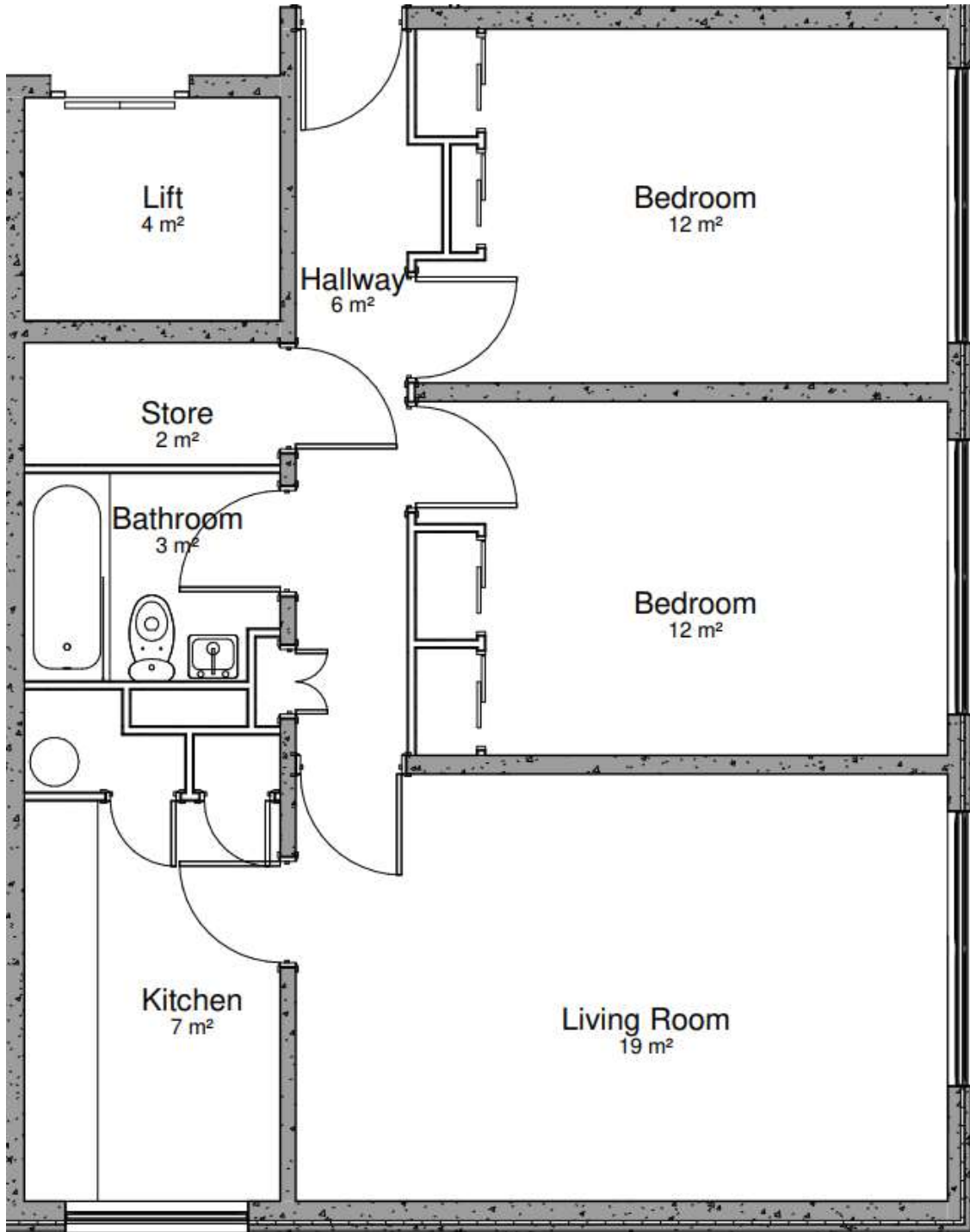
Please use the section below to provide further information relating to any issues you may be experiencing such as damp, mould, condensation or cold spots/draughts within your flat. Information such as the size of the visible issue, how long you have had this problem and if it is worse when it is cold/wet weather is useful for us to know.

Flat No:  
Floor:  
Block:  
Contact Details:

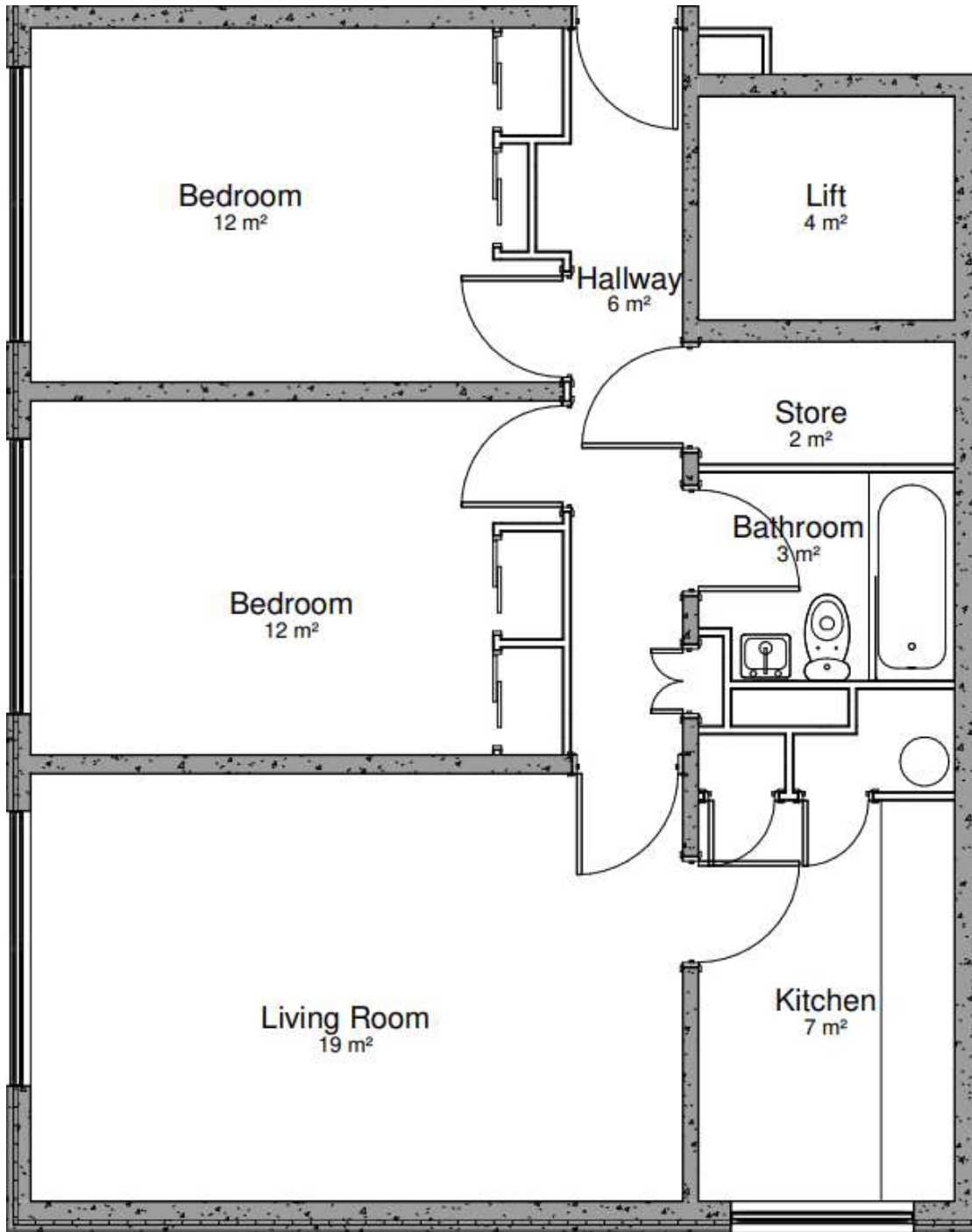
# Flat X / 1



## Flat X / 2



# Flat X / 3



# Flat X / 4

