

NEWSLETTER 03

NOVEMBER

This month's update on the Moredun Multi blocks project includes:

- The status of the project
- **A summary of the plans being submitted to the council**
- Info on resident sessions – past and upcoming



Introduction

Dear Residents

We want to make improvements to the six multi-storey blocks at Moredun to make them safer, warmer and more comfortable places to live.

- **Castleview House**
- **Forteviot House**
- **Little France House**
- **Marytree House**
- **Moncrieffe House.**
- **Moredun House**

The proposal sets out plans to upgrade Moredun's residential blocks and landscape. The works will include new cladding and windows to improve energy efficiency and appearance, along with updated paths, parking areas, and entrances to support better access and safety.

We also propose sustainable drainage systems (SUDs) to manage rainwater more effectively, and the addition of new community spaces to support social activity. Bin stores will be improved, and mechanical and electrical systems will be modernised to meet current standards.

What we've done so far

Over the last two years, we've completed surveys and our architect, Anderson Bell Christie, has spoken with residents and held engagement sessions and events to help shape the designs and future of the buildings.

Listening to your experiences living in the buildings and feedback and ideas for improvements has shaped the proposals. Thank you to everyone who took part and commented on the proposals.

We are now working on the technical design (how the proposals are to be built). Once complete, we can apply for a building warrant and progress to the construction stage.

Planning Submission Coming Soon

We're preparing to submit the refurbishment plans to the Council for approval. This is a standard step for projects of this size.

Planning applications will be submitted for all six blocks.

The Planning Department will review the proposals and decide whether to grant permission for the work to go ahead. Because the Council is both the applicant and the assessor, the decision will likely be made by the Development Management Sub-Committee, which is made up of elected Councillors.

Once the applications are submitted and validated by the Council, you'll be able to view the plans and share your comments. **Your feedback is important** — the Council will consider residents' views before making a final decision. We'll make sure the information is easy to access and will send out clear instructions when it's ready.

In the meantime, this newsletter gives you an early look at what we're planning to submit — focusing on **the proposed external changes to the blocks' appearance**.



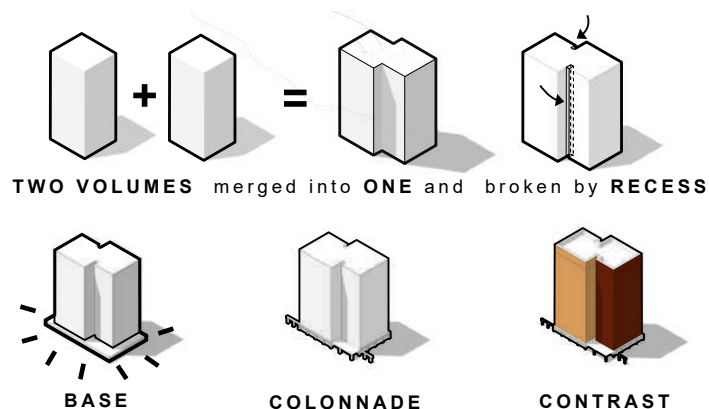
Towers' Appearance

We're working with the existing towers to give them a more modern and welcoming look. The design focuses on three key ideas:

Respecting the original design – The buildings have a unique shape with stair cut-outs, and we're keeping that while refreshing the overall look.

Making the buildings feel more people-friendly – We're adding columns at ground level to link the blocks, improve navigation, and create a more inviting edge next to the upgraded park.

Improving the overall appearance – Colour, pattern, and a unified roof edge will help the towers look slimmer and cleaner, replacing the old red railings and metal trim.



CONTINUOUS PARAPET
consistent look

PANEL PATTERN
Highlighting vertical proportions

RECESS SHADOW GAP
breaking up the massing

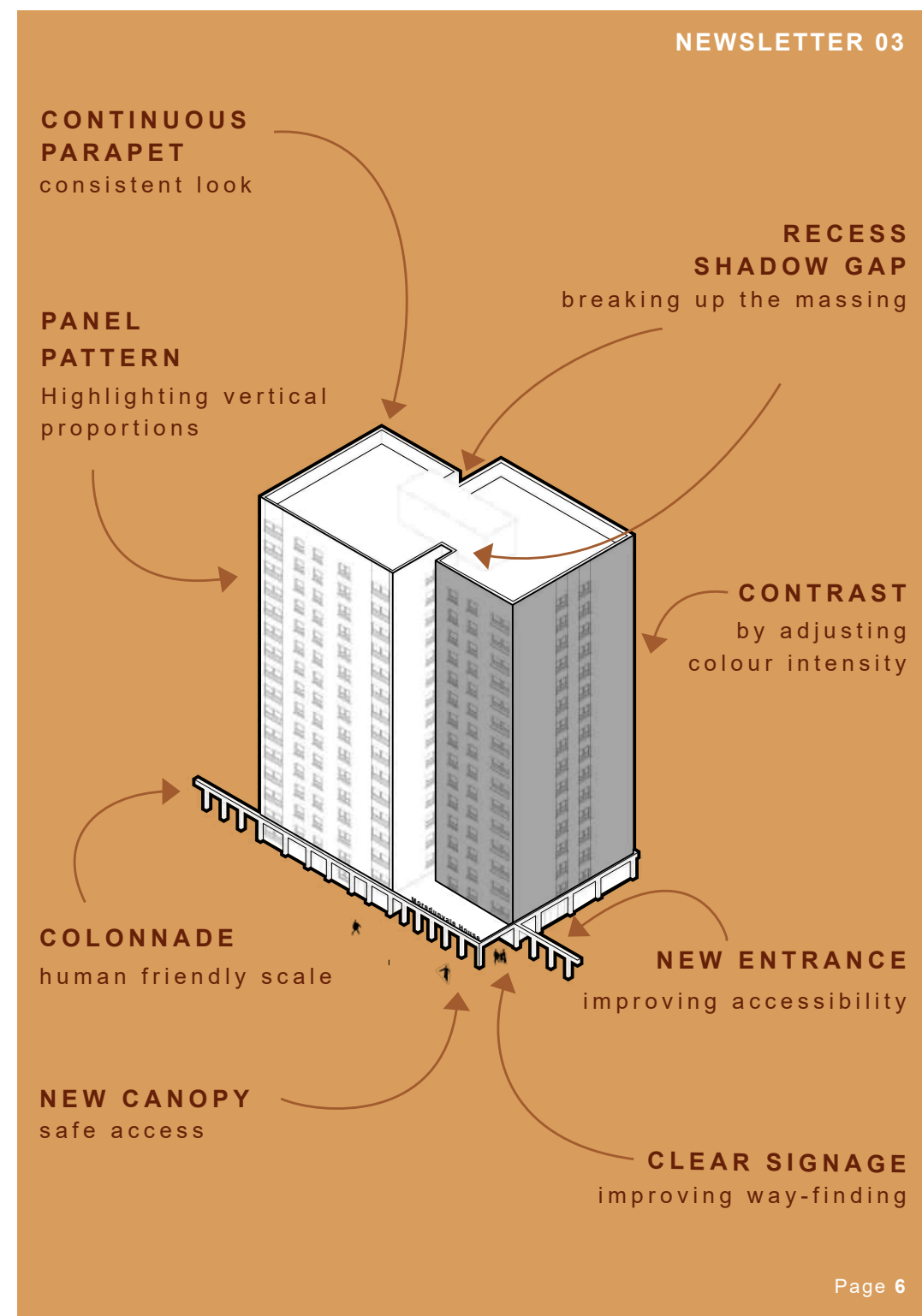
CONTRAST
by adjusting colour intensity

COLONNADE
human friendly scale

NEW ENTRANCE
improving accessibility

NEW CANOPY
safe access

CLEAR SIGNAGE
improving way-finding





Summary of Proposals

Safe and Durable

Fire safety is a top priority. That’s why all materials used on the outside of the buildings must meet strict safety standards. The cladding system will be non-combustible, using materials rated A1 or A2 — meaning they won’t catch fire.

Built to Last

Durability is just as important. We’ve chosen materials that will stand the test of time. Our research showed that textured finishes perform better than smooth ones, staying cleaner and looking fresher for longer. Based on this, we selected textured aluminium panels for the upper floors and concrete cladding for the ground level — both strong, safe, and low-maintenance.

Colour Inspired by the Community

To help the buildings feel more connected to the area, we developed a colour scheme inspired by nearby buildings and the surrounding park. In May 2025, residents were invited to a colour workshop to share their views. The most popular idea was to give each block its own colour using a warm, earthy palette. This adds vibrancy and helps each building feel unique.



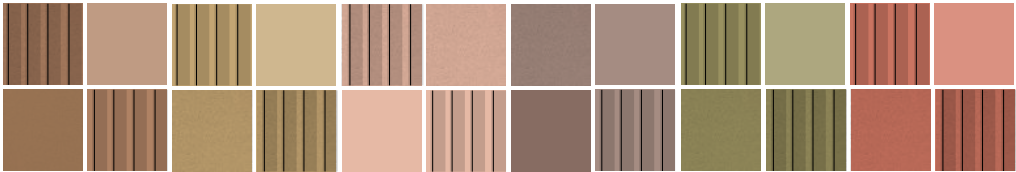
ELEVATION



DETAIL



EXAMPLES OF TEXTURED CLADDING PANELS

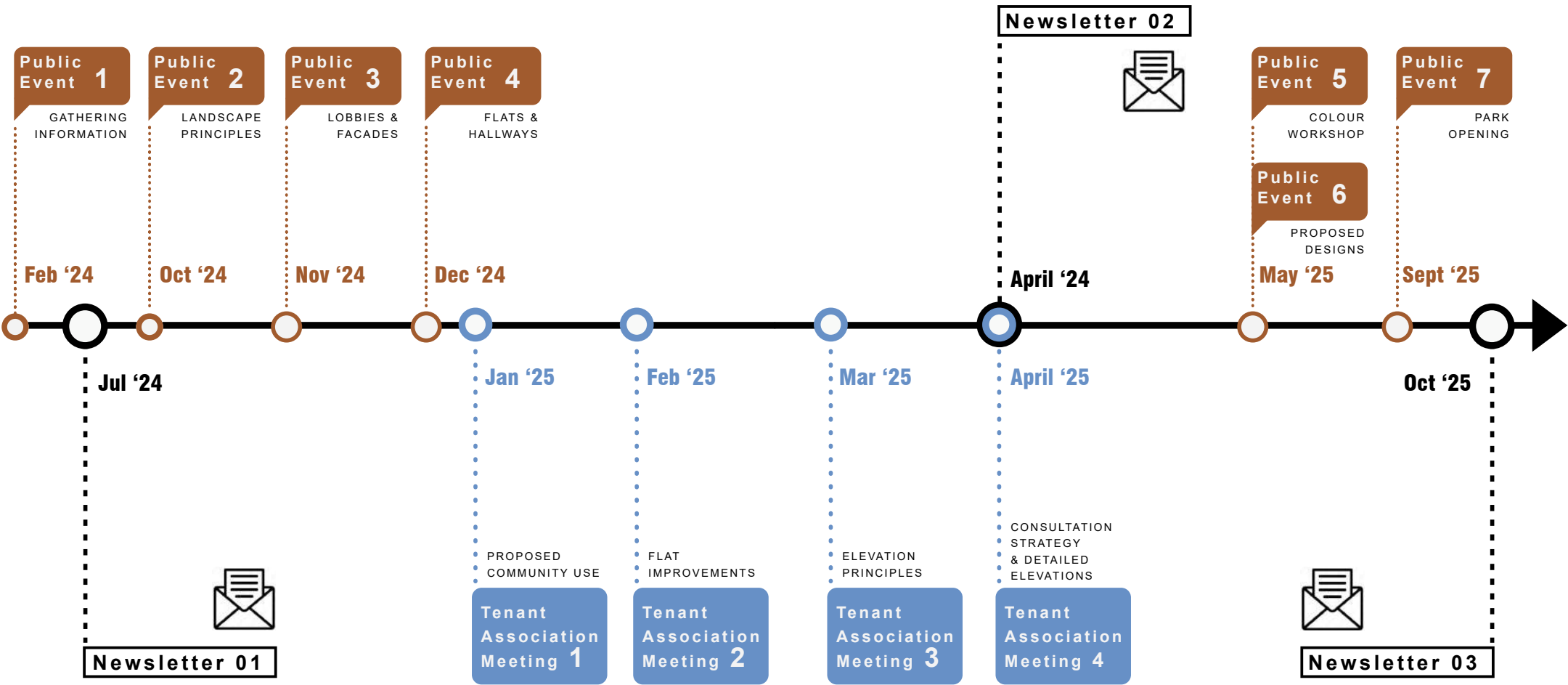


CHOSEN COLOUR SWATCHES - WARM COLOUR TONES



Timeline of the engagements

We have posted newsletters, hosted consultations at the blocks and held meeting with the Moredun Multis Tenants Association so far.
This timeline shows when we did each of these things.



Keeping you up to date: Future Events

We want to keep all residents informed about the project. You'll find updates on the display boards in block lobbies and on our website, including details about upcoming events.

We'll also be hosting more public consultation sessions and sharing news through newsletters (posted through your door), posters in lobbies, and online updates.

If you'd like to take part in future engagement sessions, please keep an eye out for these announcements.

The next resident engagement sessions are:

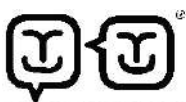
- Thursday **29th January 2026** -10am-2:30pm
- Thursday **26th February 2026** -10am-2:30pm
- Thursday **26th March 2026** -10am-2:30pm
- Thursday **26th April 2026** -10am-2:30pm
- Thursday **21st May 2026** -10am-2:30pm
- Thursday **18th June 2026** -10am-2:30pm



INTERPRETATION AND TRANSLATION

If you require further information before then or wish to share your thoughts, please contact hrmi@edinburgh.gov.uk.

You can get this document on audio CD, in Braille, large print if you ask us. Please contact HRMI@edinburgh.gov.uk with your request. Our ITS service can also give information on community language translations.



HAPPY TO TRANSLATE