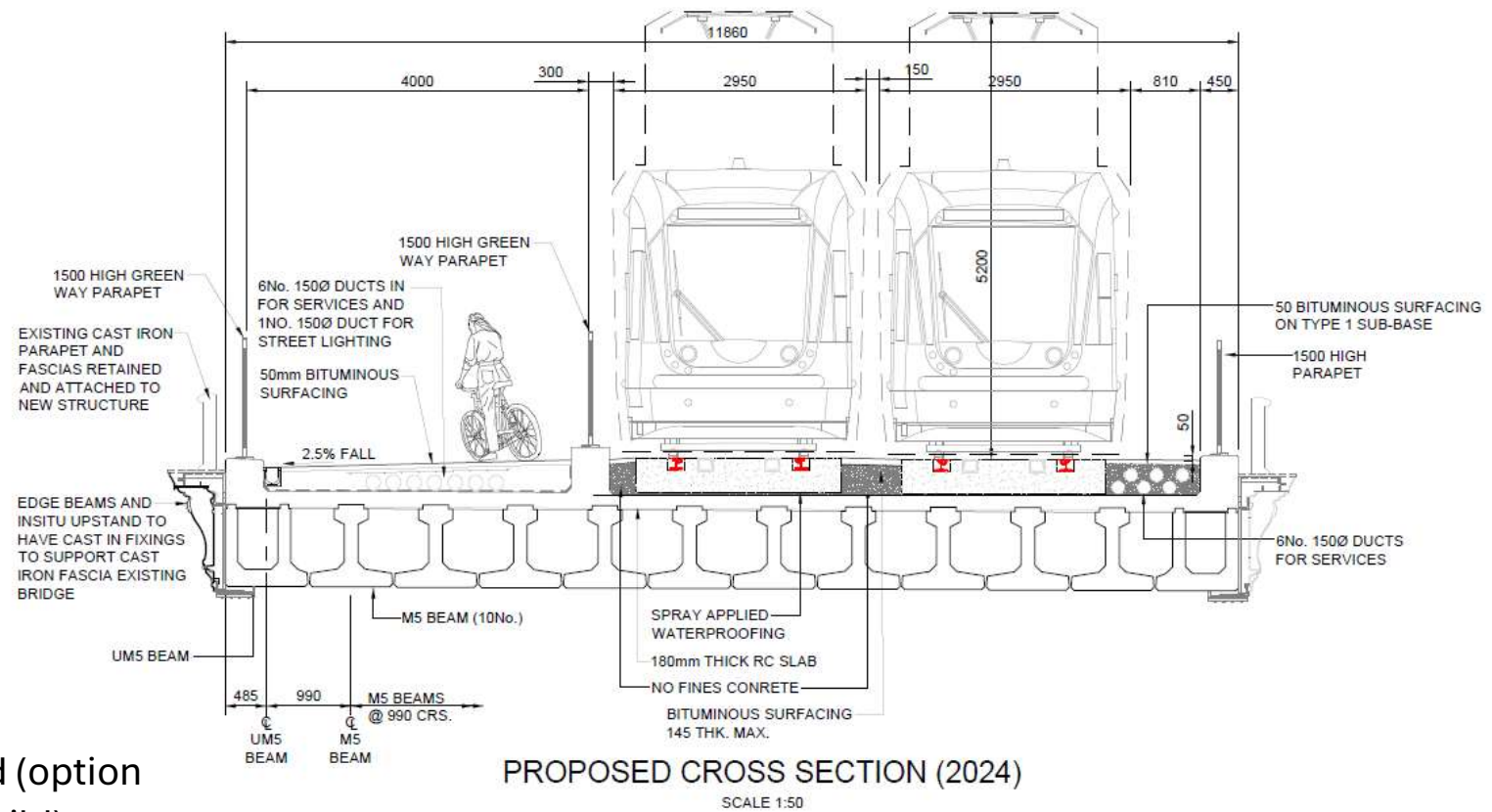


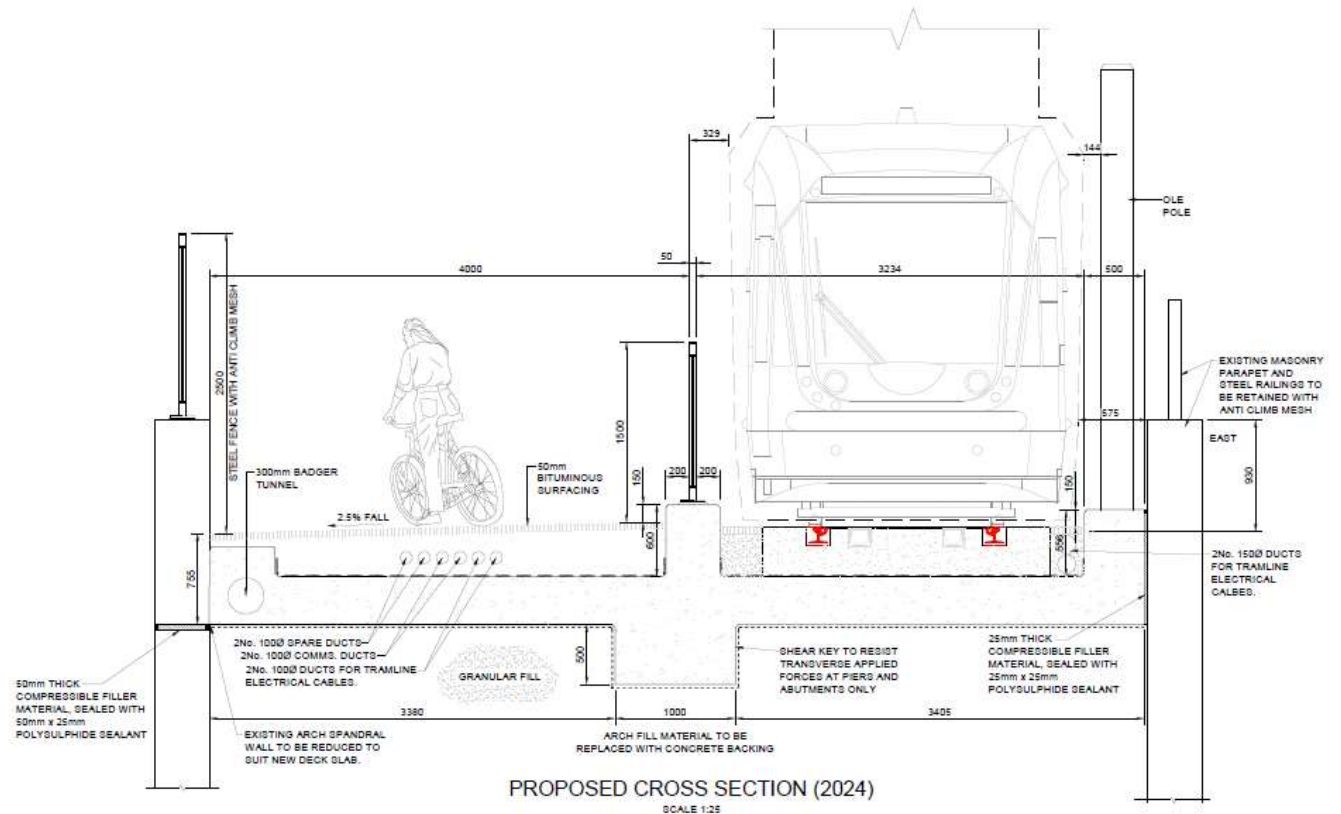
Roseburn Terrace Bridge

- Existing width – 7.848m
- Double track
- New structure being proposed (option 3 partial demolishing and rebuild)
- Shared space – 3m minimum
- Overall width – 11.86m

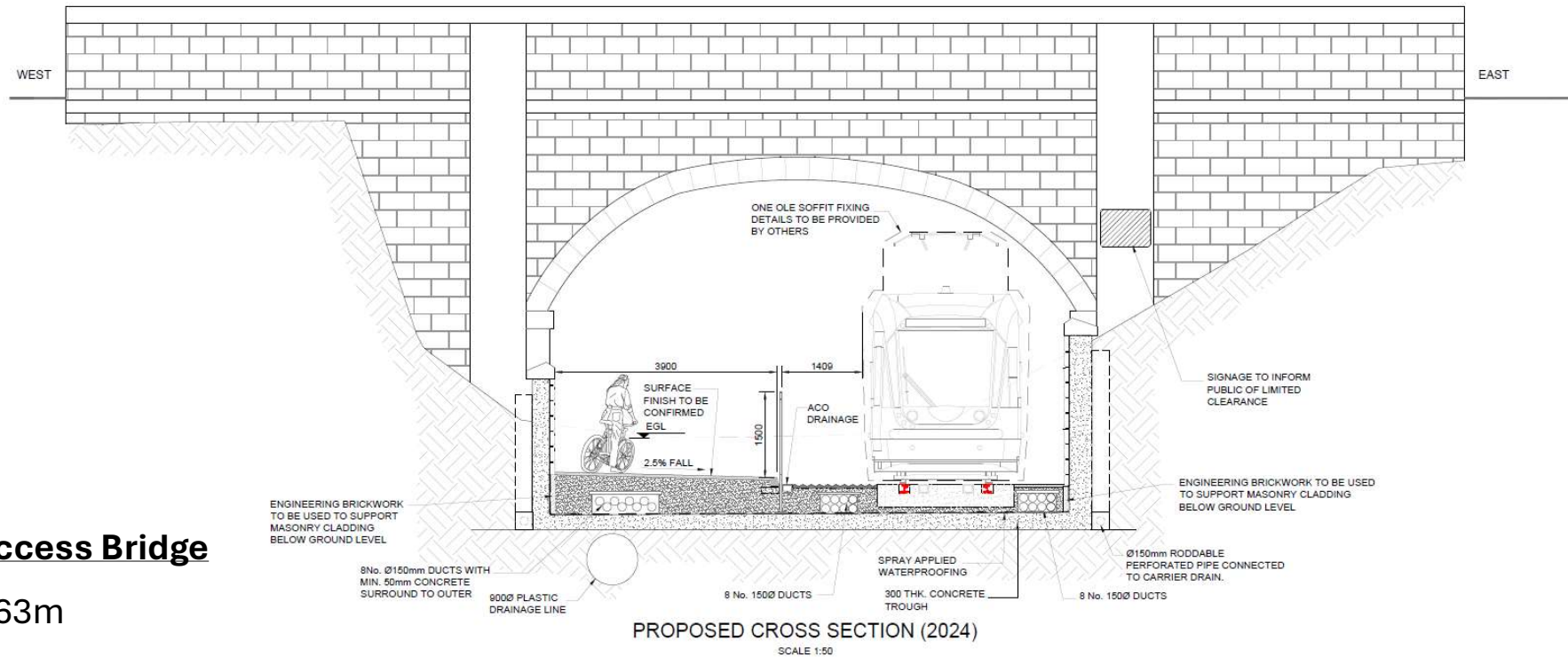


Coltbridge Viaduct

- Existing width – 6.3m (concrete infill to west approx. 0.7m)
- Single track
- Shared space – 4m

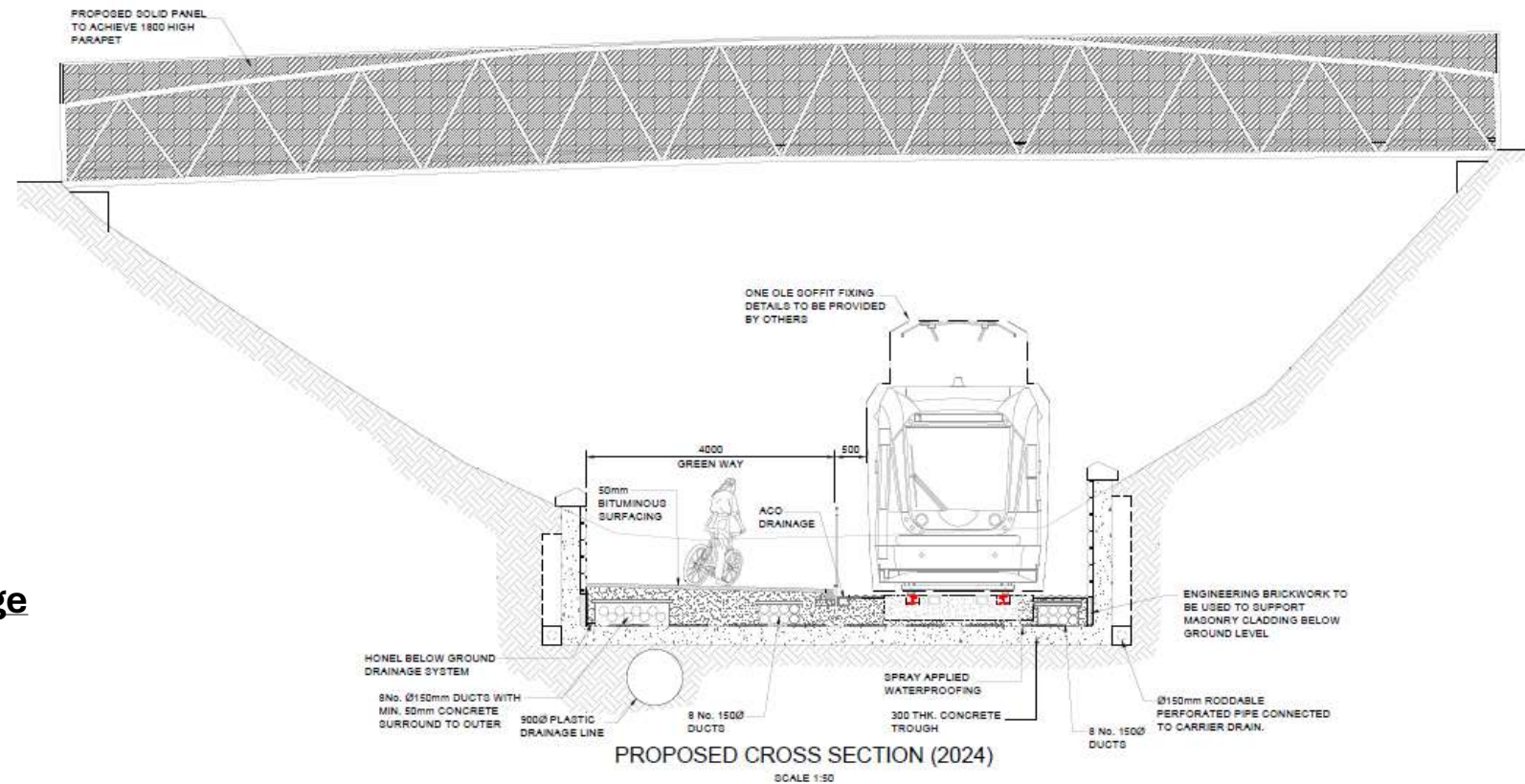


- Existing width – 9.63m
- Single track
- Shared space - 3.9m



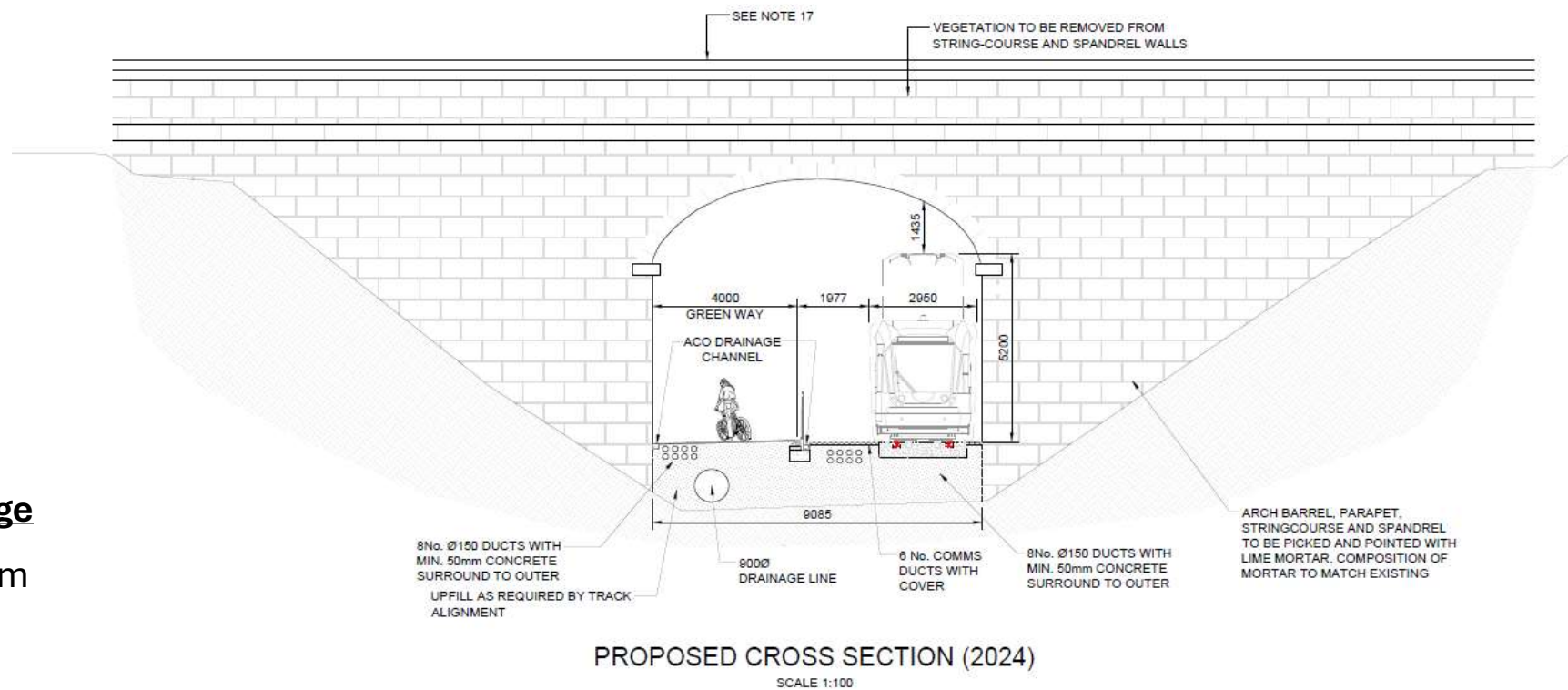
St Georges School Footbridge

- Existing width – 17m
- Single track
- Shared space - 4m



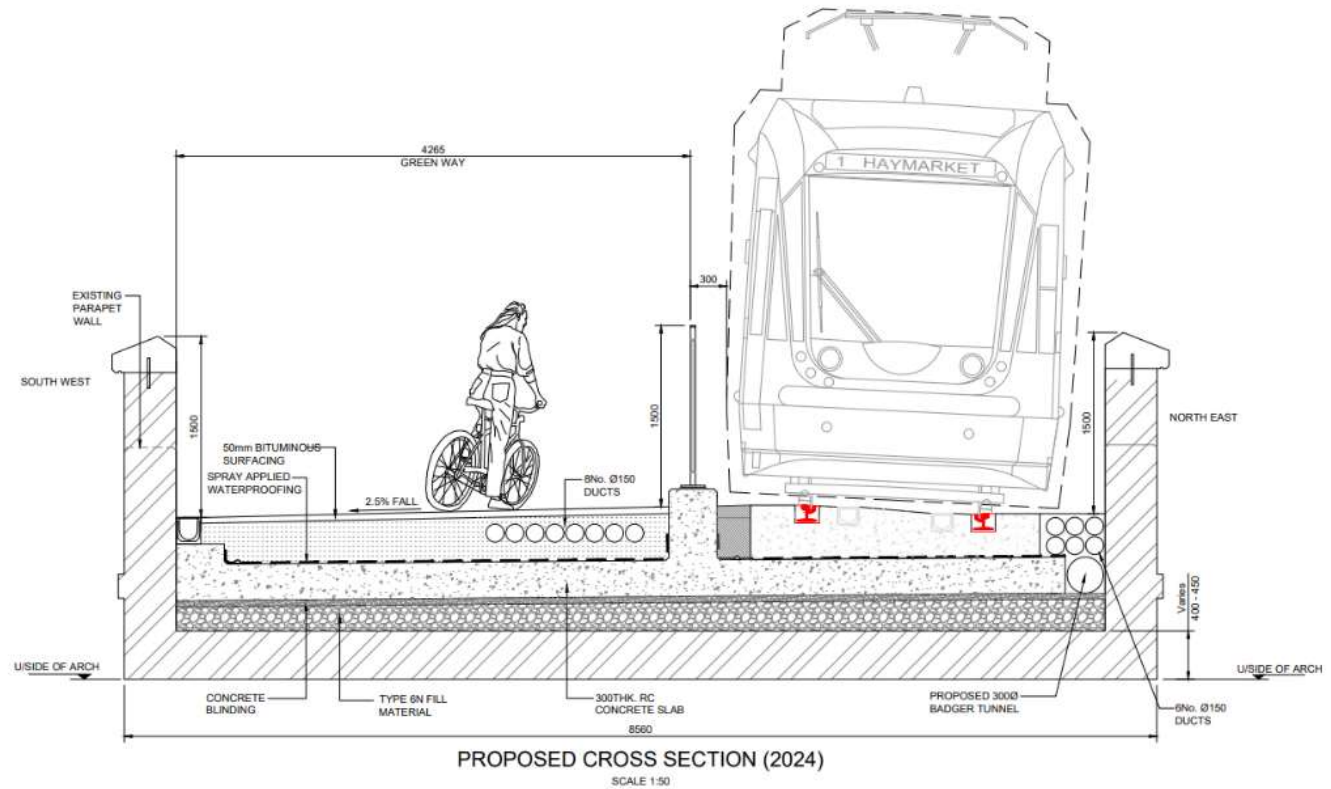
Ravelston Dykes Bridge

- Existing width – 9.1m
- Single track
- Shared space – 4m



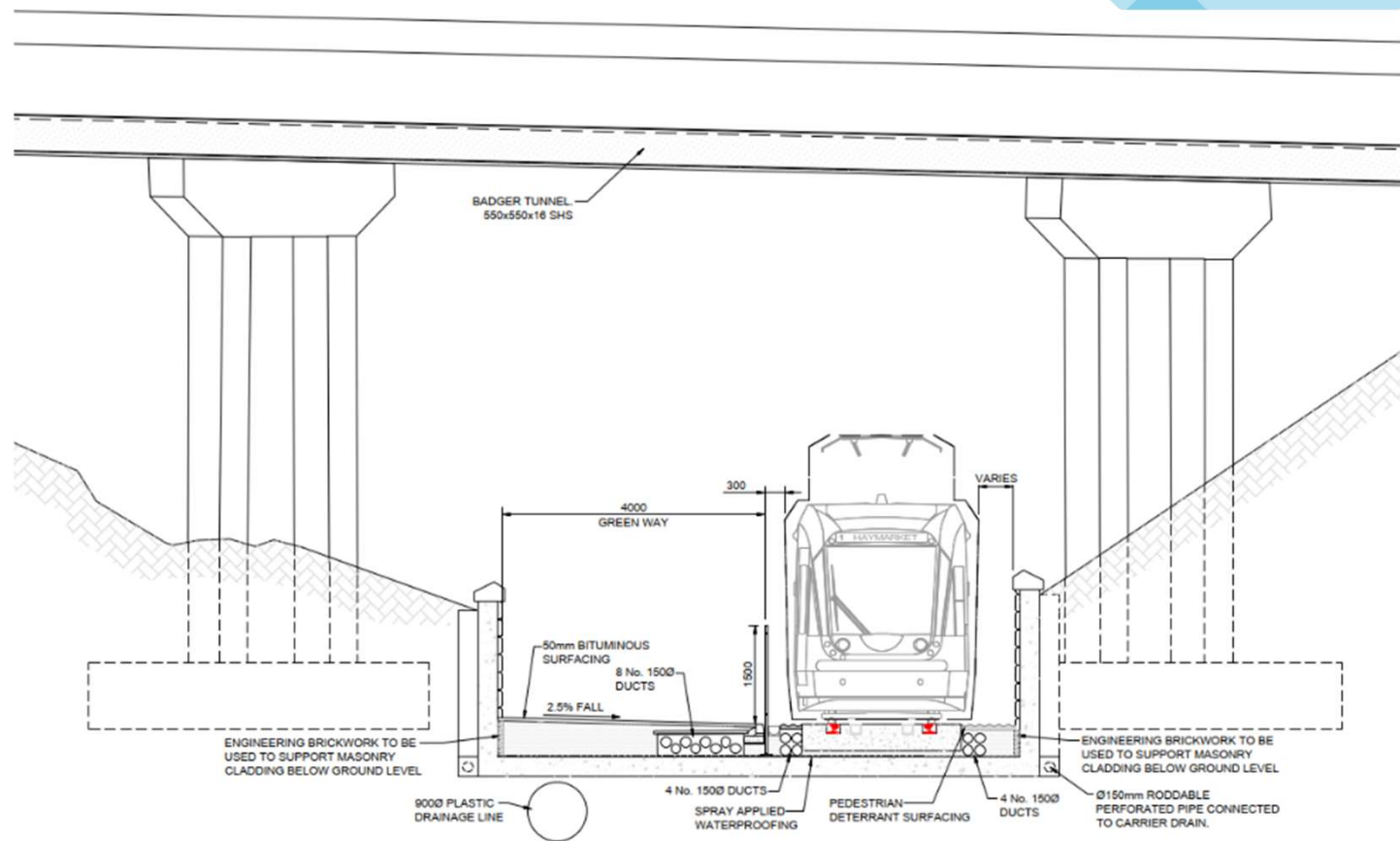
Craikleith Drive Bridge

- Existing width – 7.8m
- Single track
- Shared space – 4.2m



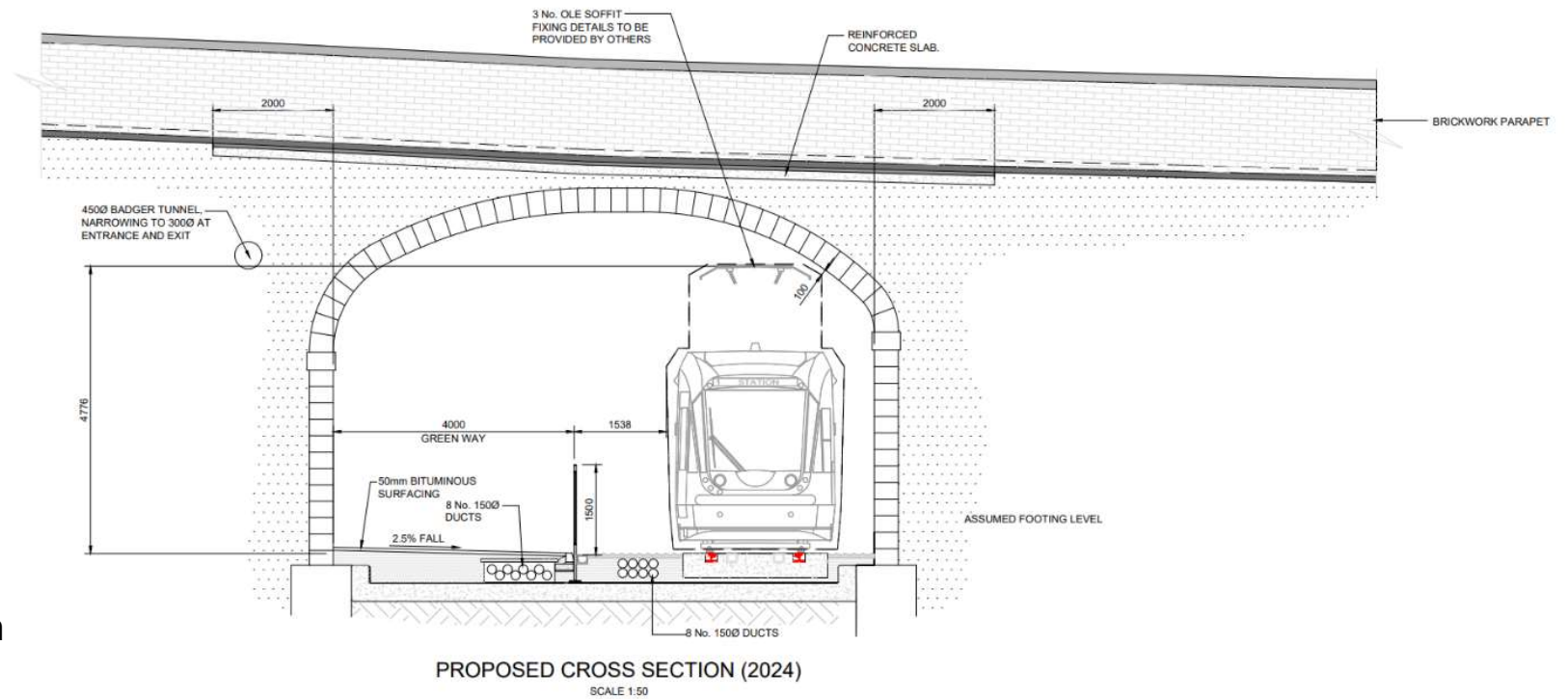
- Existing width – 7.6m
- Single track
- Shared space – 4m

- Existing width – 7.6m
- Single track
- Shared space – 4m



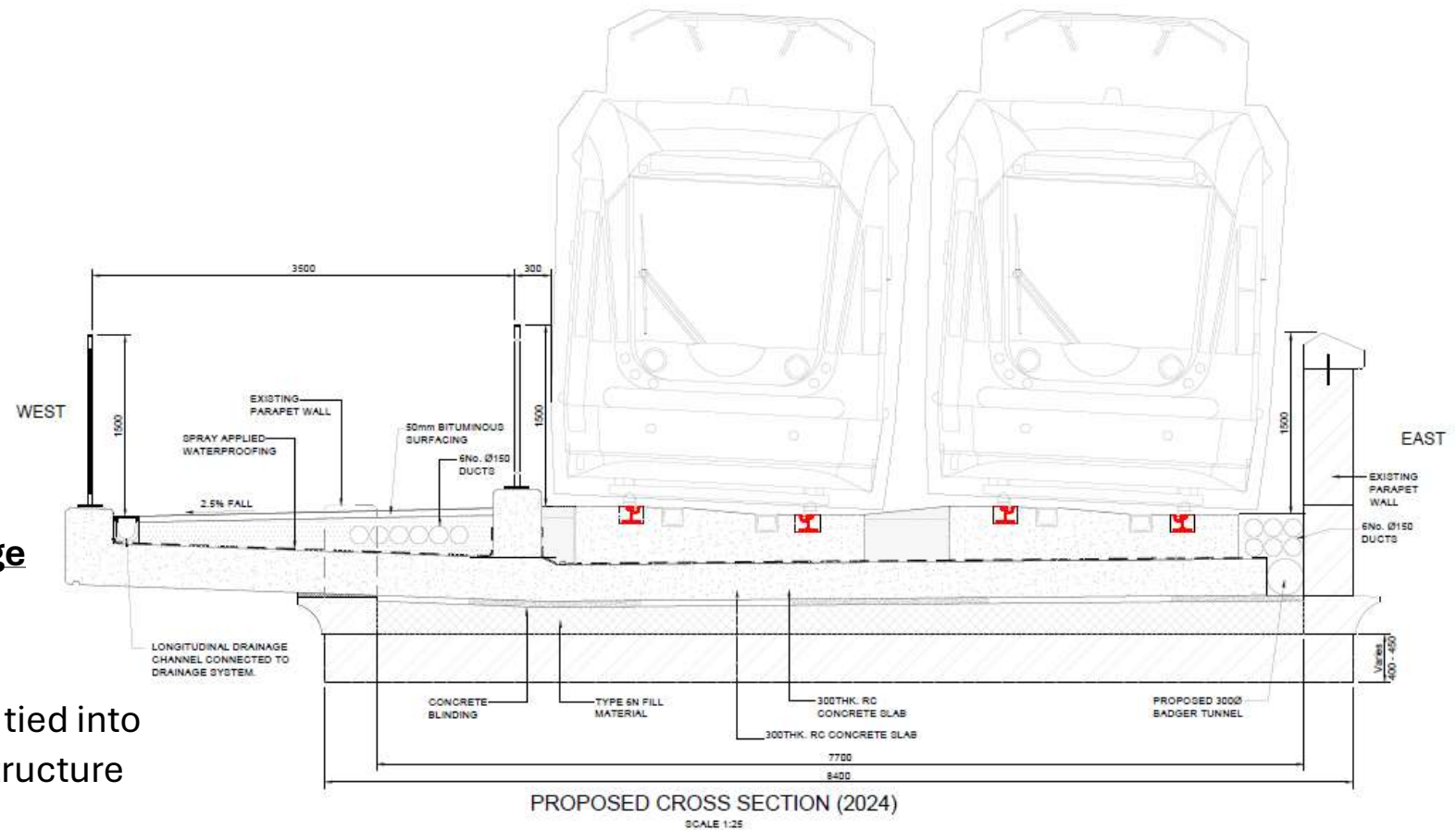
Queensferry Road

- Existing width – 11.75m
- Single track
- Shared space – 4m



Groathill Road South Bridge

- Existing width – 7.7m
- Double track
- New 2m wide cantilever tied into existing masonry arch structure
- Shared space – 3.5m



- Existing width – 8.8m
- Double track
- Shared space – 2.172m

