

The City of Edinburgh Council

Outdoor Learning & Adventure Education Team Summary Information

Version control:	4 (24/07/25)
Key contact:	Andrew.Bradshaw@edinburgh.gov.uk

Thank you for your interest in the Council's Outdoor Learning and Adventure Education (OL&AE) Team.

The Team comprises the Bangholm, Benmore and Lagganlia Outdoor Centres, plus the Risk Factory.

We are a motivated team committed to inspirational and accessible outdoor learning (OL) and adventure education (AE). Our purpose is to **champion**, **empower** and **deliver** quality OL and AE.

The Team's brand name is Experience Outdoors. Our [Empowered Outdoor Learning project](#) seeks to develop Edinburgh's OL across Education in collaboration with the Early Years Team and Additional Support for Learning Service.

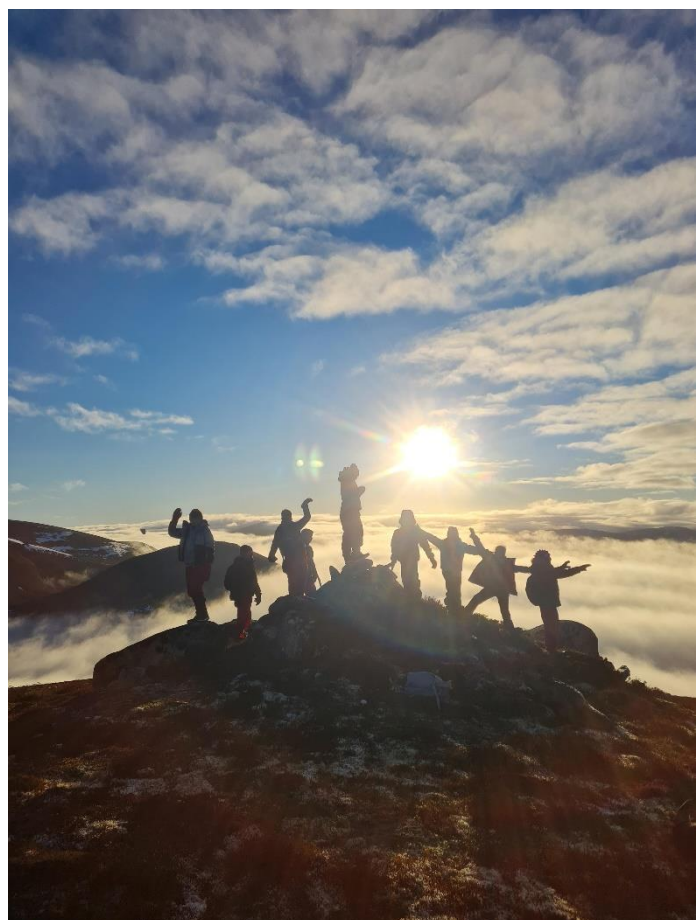
The OL&AE Team outputs include targeted and universal day and residential delivery; career-long professional learning; Council's excursions policy, guidance, procedures and reviews / approvals; coordinating the Council's Duke of Edinburgh's Award licence; and supporting learning and teaching.

More information is available via; [Who we are](#), [Outdoor Learning in NUMBERS](#), [Experience Outdoors website](#), [Outdoor Learning Map](#), and [key contacts](#).

Thanks,

Andrew

Andrew Bradshaw | Wider Achievement Manager (Outdoor Learning and Adventure Education) | Wider Achievement and Lifelong Learning | Children, Education and Justice Services | The City of Edinburgh Council | Waverley Court, 4 East Market Street, Edinburgh, EH8 8BG | 07718 660 549 | Andrew.Bradshaw@edinburgh.gov.uk | www.experienceoutdoors.org.uk



Our Approach



OUR MISSION

To...

**CHAMPION
EMPOWER**

and

DELIVER

...safe, meaningful and accessible high-quality outdoor learning and adventure education experiences and outcomes.

OUR VISION

All learners routinely undertake safe, meaningful, progressive and impactful outdoor learning & adventure education.

This will involve:

Access to appropriate breadth, depth and intensity of complementary experiences, delivering significant outcomes.

Significant contribution to Learning for Sustainability, and Health and Wellbeing.

Residential experiences integral to curricula and attendance maximised.

Delivered via a confident and competent Council workforce (employees, workers and approved volunteers) and partners.

Embedded awards and accredited pathways.

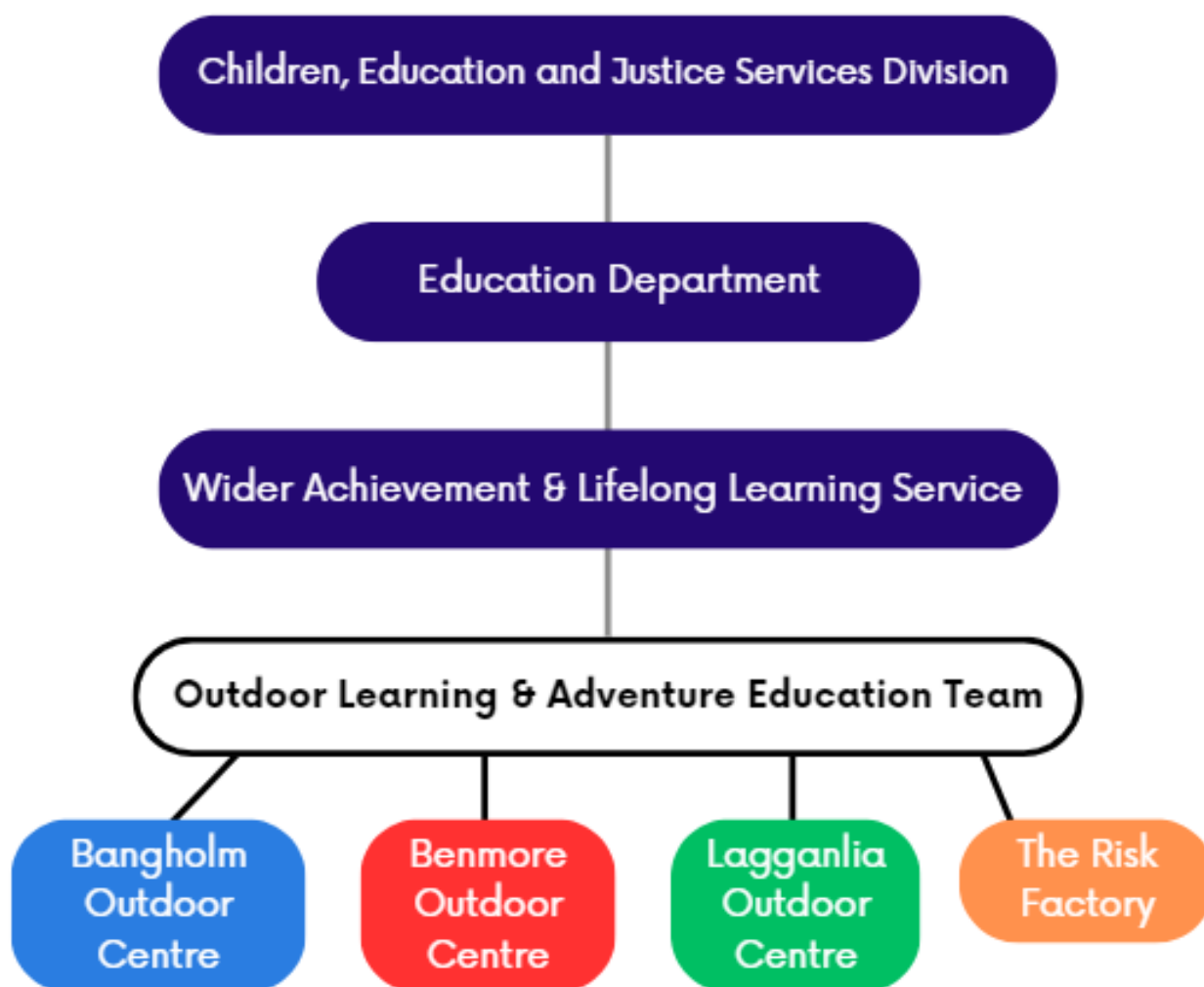
Appropriate, accessible and impactful guidance, resources and training; incorporating Council priorities including achieving Net-Zero.



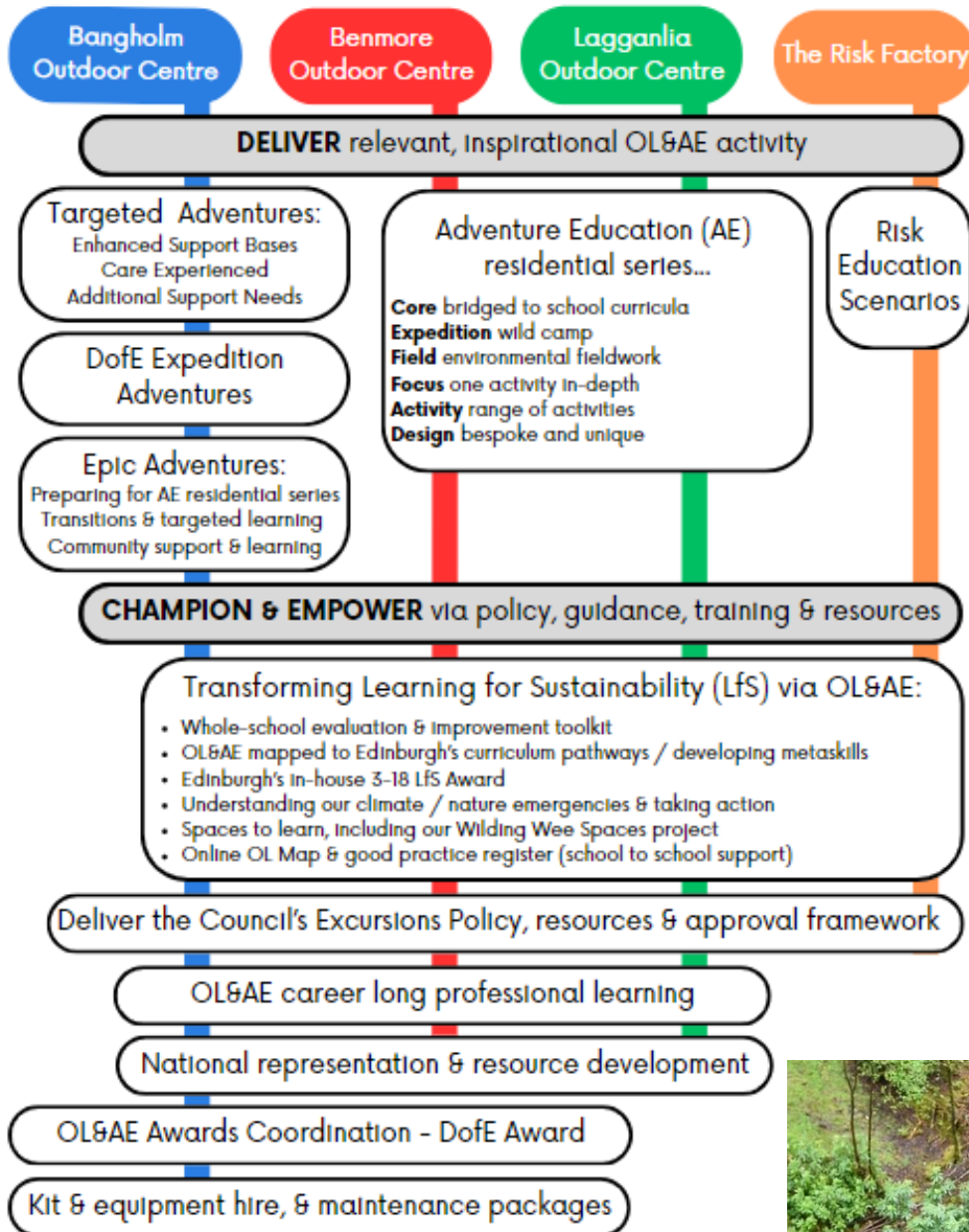


Our Structure

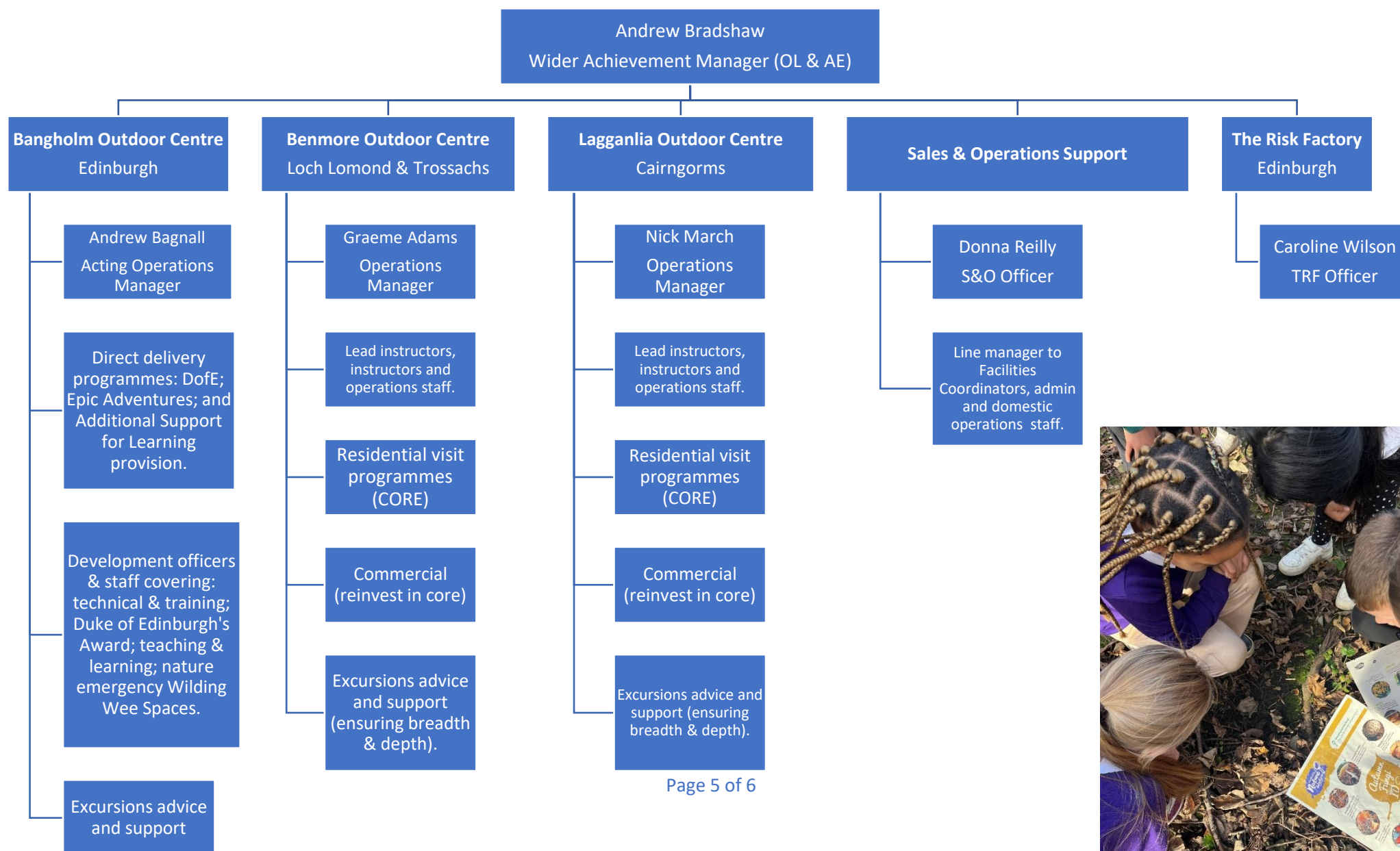
The OL&AE Team is part of the Council's Wider Achievement and Lifelong Learning Service, which sits within the Education Department.



What we do



Our Team



Outdoor Learning and Adventure Education Team Improvement Priorities & Outcomes

These four priorities are interlinked, interdependent and overlap. Sustainable development and the 4 capacities cut across all four.

Cross-cutting strands		Priority themes	Improvement priorities	Outcomes
Sustainable Development*	Successful learners, confident individuals, effective contributors & responsible citizens.	1 Regular, relevant and progressive OL&AE.	Contribute to transforming Learning for Sustainability through regular, relevant, progressive and complementary high-quality OL&AE across the 3-18 curriculum. All learners benefit, with a particular focus on health and wellbeing, disadvantaged learners and those with additional support needs.	Learners benefit from regular, relevant, progressive and complementary high-quality OL&AE across the curriculum.
		2 Attending high quality OL&AE residential.	Maintain a high attendance rate for quality residentials at Benmore and Lagganlia, ensuring those facing the greatest disadvantage benefit from impactful experiences.	Learners from schools visiting Benmore and Lagganlia access impactful residential experiences, which are integral to all schools' curricula.
		3 Achieving OL&AE awards and accreditation.	Increase the number of learners achieving OL&AE awards and accreditation, with a particular focus on the Duke of Edinburgh's Award, quality and impactful experiences, disadvantaged learners and those with additional support needs.	Learners achieve relevant OL&AE awards and accreditation via high quality experiences; supporting their passion for the outdoors and contributing to their personal learning pathways.
		4 Up to date excursions policy, guidance and training.	Update excursions guidance, training / workforce planning and resources; further embedding equity, equality & environmental sustainability. Delivers an increasingly more confident and competent workforce, contributes to Edinburgh's net zero 2030 and ensures impactful visits are accessible.	Learners benefit from safe, accessible and relevant excursions; aligned to Council priorities.

*Sustainable Development defined as the [17 Sustainability Development Goals](#):

