

Corstorphine Connections Engagement Summary Report

City of Edinburgh Council

Project number: 60636731

15 December 2021

Quality information

Prepared by	Checked by	Verified by	Approved by
Samantha Stirling Graduate Consultant	Paul Matthews Project Manager		

Revision History

Revision	Revision date	Details	Authorized	Name	Position
1	29/11/21	Draft	PM	Paul Matthews	Project Manager
2	15/12/21	Updated Draft	PM	P Matthews	Project Manager

Distribution List

# Hard Copies	PDF Required	Association / Company Name

Prepared for:

City of Edinburgh Council

Prepared by:

Samantha Stirling
Graduate Consultant
E: sam.stirling@aecom.com

AECOM Infrastructure & Environment UK Limited
1 Tanfield
Edinburgh EH3 5DA
United Kingdom

T: +44 131 301 8600
aecom.com

© 2021 AECOM Infrastructure & Environment UK Limited. All Rights Reserved.

This document has been prepared by AECOM Infrastructure & Environment UK Limited ("AECOM") for sole use of our client (the "Client") in accordance with generally accepted consultancy principles, the budget for fees and the terms of reference agreed between AECOM and the Client. Any information provided by third parties and referred to herein has not been checked or verified by AECOM, unless otherwise expressly stated in the document. No third party may rely upon this document without the prior and express written agreement of AECOM.

Table of Contents

1.	Introduction	5
2.	Proposals	6
3.	Previous Engagement.....	10
4.	Schools Engagement.....	11
5.	Stakeholder Meetings	12
5.1	Corstorphine Community Council 26 th October 2021	12
5.2	Local Access Panel Representative Group 19 th November 2021	12
6.	Online Survey Responses	14
6.1	Corstorphine High Street	14
6.2	Saughton Road North Shops.....	16
6.3	Featherhall Pocket Park	17
6.4	Placemaking across the LTN.....	19
Appendix A	20
A.1	Survey	20

Figures

Figure 1 - Corstorphine High Street	6
Figure 2 - Saughton Road North	7
Figure 3 - Featherhall Pocket Park Option 1	8
Figure 4 - Featherhall Pocket Park Option 2	8
Figure 5 - Placemaking Ideas across the LTN.....	9
Figure 6: School Engagement.....	11
Figure 7 – Most to Least Preferred Placemaking Options for Corstorphine High Street	14
Figure 8 – Themed Responses	15
Figure 9 – Most to Least Preferred Placemaking Options for Saughton Road North Shops	16
Figure 10 – Themed Responses	17
Figure 11 - Preferred Option for Featherhall Pocket Park	17
Figure 12 - Themed Responses.....	18
Figure 13 - Other Locations Suggested by Respondents for Placemaking	19

Tables

Table 1 - School Engagement Summary	11
---	----

1. Introduction

The City of Edinburgh Council (CEC) is aiming to create a safer, more comfortable street environment for residents walking, cycling, wheeling and spending time in the local streets and outside spaces within Corstorphine. The project, named the Corstorphine Connections Low Traffic Neighbourhood, will improve the safety of routes to school, address issues identified with speed and volume of traffic, facilitate placemaking improvements in the area and improve walking and cycling routes and access in the area.

This report summarises the responses to the Corstorphine Connections Low Traffic Neighbourhood Placemaking survey undertaken during the concept design stage of the project between the 25th October and 12th November 2021. This engagement programme aimed to get local feedback on a set of placemaking design ideas.

2. Proposals

This section summarises the placemaking proposals that were presented for public consultation between 25th October and 12th November 2021. A copy of the survey can be found in Appendix A.

The survey invited participants to rank and comment on placemaking ideas in multiple areas of Corstorphine: Corstorphine High Street, Saughton Road North Shops, Featherhall Pocket Park. Participants could also suggest other areas of Corstorphine for placemaking. The concept design proposals for each of the sections shown in Figures 1 to 4.

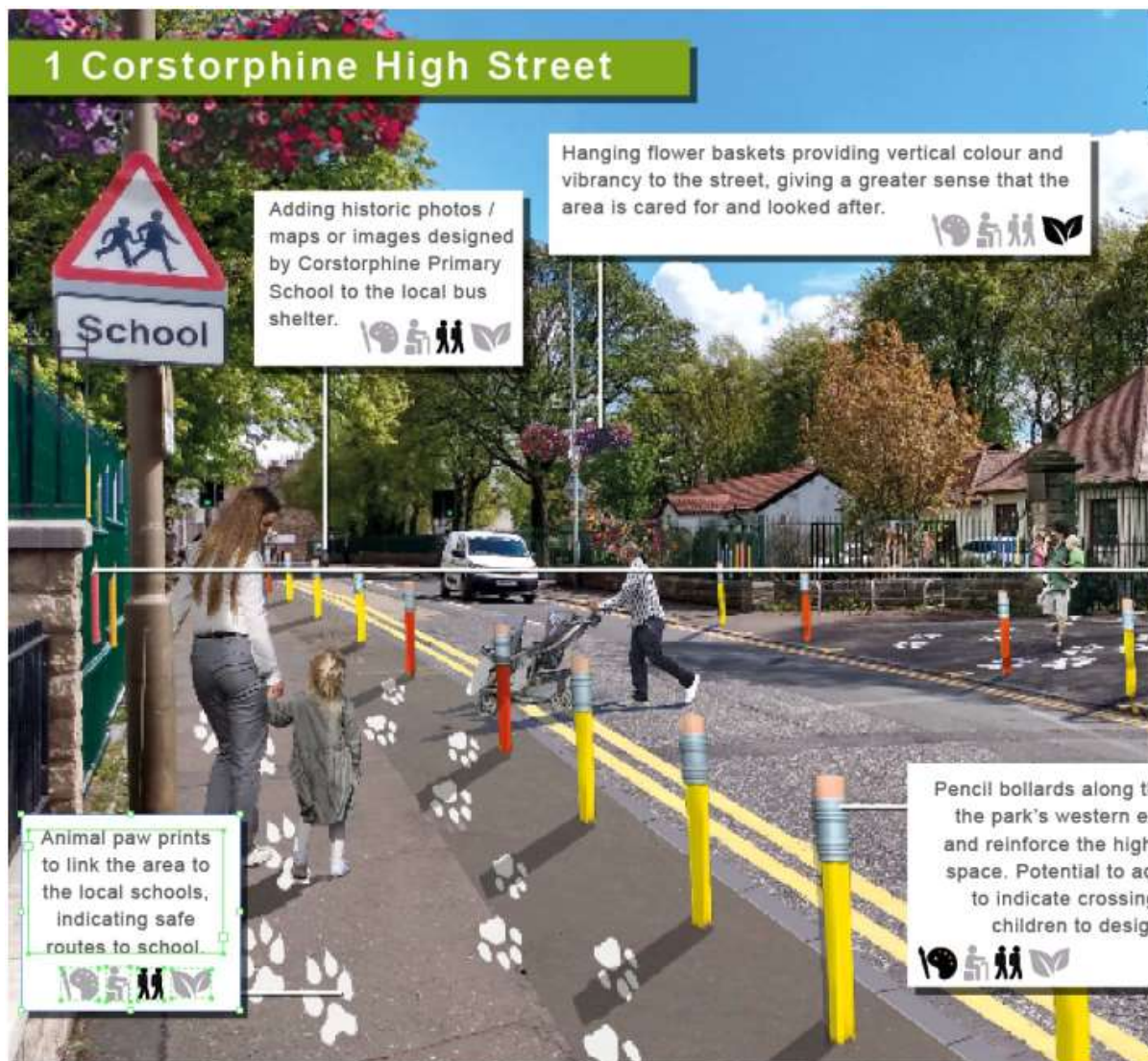


Figure 1 - Corstorphine High Street



Figure 2 - Saughton Road North



Figure 3 - Featherhall Pocket Park Option 1



Figure 4 - Featherhall Pocket Park Option 2

Figure 5 shows the full proposal for placemaking in Corstorphine.



Figure 5 - Placemaking Ideas across the LTN

3. Previous Engagement

There have been two stages of prior engagement on the CC LTN project earlier in 2021. The following forms of engagement have been used in Stage 1 of the project:

- The public launch of Stage 1 of the project was on 8 February
- Over 4,000 leaflets were distributed to residents and building occupiers within the project scope area
- Email notifications were issued to all stakeholders at the start of the engagement period to raise awareness of the project
- The first Community Reference group meeting was held on 3 March to raise awareness of the project
- A total of 505 completed surveys were received through the project's online survey.

The following forms of engagement have been used in Stage 2 of the project:

- The public launch of Stage 2 of the project was on 4 June
- Over 4,000 leaflets were distributed to residents and building occupiers within the project scope area.
- Email notifications were issued to all stakeholder and mailing list at the start of the engagement period to raise awareness of the project
- A Community Reference Group meeting was held on 14 June to raise awareness of the proposed designs and to gather initial feedback
- Additional leafleting with a focus on businesses was carried out on 14 June
- A total of 794 complete surveys were received through the project's online survey
- A total of two co-design workshops were held with the public. This allowed the design team to explore design details in greater depth with the community
- Two meetings were arranged with the Access panel on 3 June and 1 July
- The project team liaised with a representative from police Scotland and Scottish Fire and Rescue Service regarding the concept design proposals.

4. Schools Engagement

A programme of engagement was undertaken with the Carrick Knowe and Corstorphine Primary Schools. Table 1 below summarises the school engagement work that has taken place. A full engagement report of the school activities can be found online on the project webpage (<https://consultationhub.edinburgh.gov.uk/sfc/low-traffic-neighbourhoods/>).

Table 1 - School Engagement Summary

Dates	Activity	Audience Reach
29.09.21-05.11.21	Remote engagement at Carrick Knowe Primary	Approx. 297 pupils 11 class teachers and assistance from 1 Pupil Support Assistant
29.09.21-05.11.21	Remote engagement at Corstorphine Primary	Approx. 216 pupils 8 teachers and assistance from 1 Pupil Support Assistant
25.10.21	Household flyering and resident meetings	Streets directly fronting any changes
	Online promotion and Consultation Hub	Twitter, Facebook and press release. Designs shown on Consultation Hub. Several of the children’s designs were shared in a video to promote the event which was viewed 285 times.
5.11.21	Face-to-face event outside Carrick Knowe Primary School	Approx. 150 people
5.11.21	Face-to-face event outside Corstorphine Primary School	Approx. 200 people



Figure 6: School Engagement

5. Stakeholder Meetings

As part of the placemaking design consultation, meetings were held with the Corstorphine Community Council and a group of Edinburgh Access Panel representatives. Each of these meetings considered the placemaking design proposals and used the information available online and within the online survey. Key areas of feedback and discussion are noted below from these respective meetings.

5.1 Corstorphine Community Council 26th October 2021

- Concerns were raised with regard to access to the pharmacy on Featherhall Crescent, however, it was noted the designs have been updated since the previously published Council Committee report in August in response to this issue.
- There was potential to improve the public space at the junction of Kirk Loan and Saughton Road North. Heritage would be important and agreement with adjacent landowner would be required for changes to the boundary wall.
- Concerns were raised over the use of artwork and colourful materials due to conservation/heritage area.
- Some members felt the proposals do not go far enough and more measures require to reduce private car use.
- Feedback that any street furniture, planters or artwork must be suitably maintained during the trial.
- Concerns over the potential for anti-social behaviour at Featherhall Crescent if a playpark (or similar) is provided.
- Issue raised with the potential impact on people with dementia due to colourful patterned surfacing and street furniture – as shown in some of the original images.
- Concerns raised over the safety of Kirk Loan and request for further measures to reduce traffic volume and speed.
- General concerns with footway and carriageway surfacing in the area which needs improved.
- Crossing point on Saughton Road North at Dovecot Road needs improved further than shown in proposals.
- Some concerns raised with the previous public consultations and lack of trust from the community.
- Noted that car access is important for those who require it.
- School safety measures, traffic calming and footway widening are generally supported.
- Concerns raised over the poor accessibility across the area, poor footways and difficulty for those in wheelchairs.

5.2 Local Access Panel Representative Group 19th November 2021

- Bollards are difficult to see and locate for people with visual impairments as well as reducing footway widths.
- Quality of the pavement surface is important for those with access issues.
- Suggestion any artwork on footways should be located at the back of footway, to encourage children to keep away from traffic side.
- Question of whether bus gate will allow blue badges; it was confirmed they are not permitted under Council policy as the blue badge sits with the holder rather than vehicle and this is difficult to enforce.
- People with visual impairments can have issues detecting side road crossings and prefer the use of continuous footways. Also, further colour contrast surfacing can help.
- In situations where patterns of two or more colours are proposed the colour contrasts within the pattern should be no more than 5 LRV. This ensures that the area won't be visually confusing for visually impaired or groups like those suffering from Dementia.

- Seating should be in straight and facing angles/shapes to avoid people needing to turn around to speak to others (with reduced mobility or reliance on lip reading). Further, arms are required on seating, space for wheelchairs to sit beside and slatted seats are preferred over solid surface to allow free drainage.
- Concerns raised with boulders on Featherhall Cres as trip hazards. Importance of a straight route through the area between street furniture was highlighted for users to navigate with visual impairments, wheelchairs or buggies.
- Request for planters or furniture to have chamfered edges.
- Consider improving lighting in the areas of new public spaces to help see objects in darkness.

6. Online Survey Responses

There were 305 responses to the online survey, which was live for a period of 3 weeks from 25th October to 12th November 2021. The responses are summarised in sections 3.1 to 3.4. The following questions look at the level of support for each placemaking idea from survey participants.

6.1 Corstorphine High Street

Q3: For each of the proposed changes listed below, and shown on the image above, please rank them in the order of which you like the most to the least. The most liked would be ranked 1 and the least liked ranked 4.

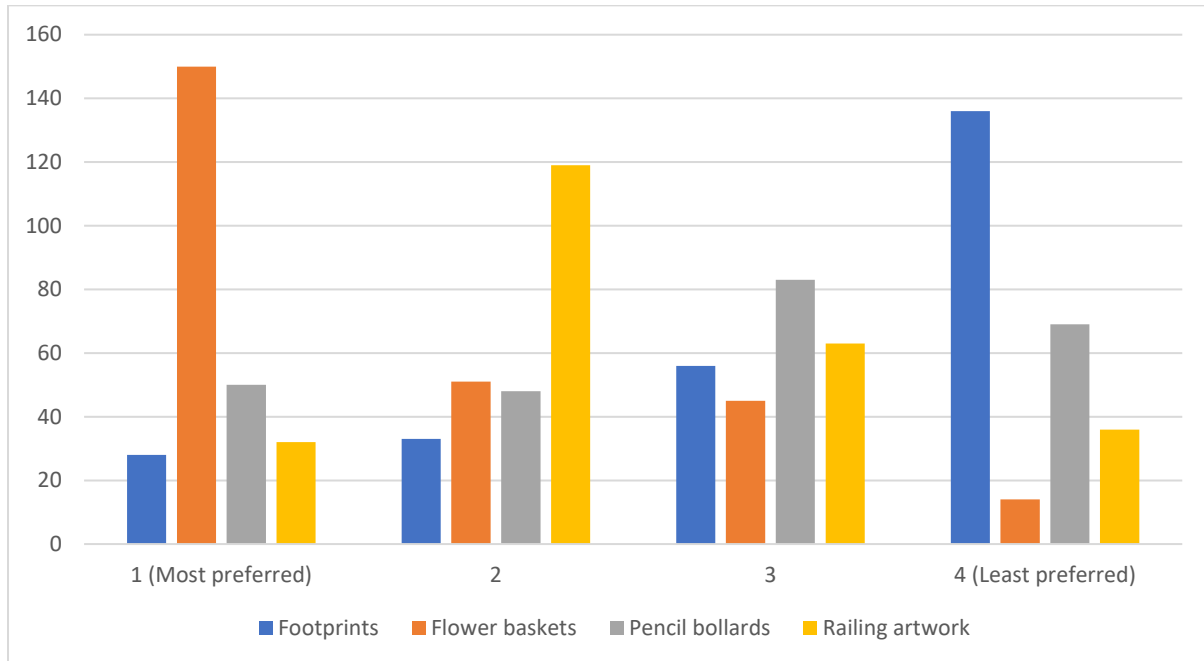


Figure 7 – Most to Least Preferred Placemaking Options for Corstorphine High Street

Figure 6 shows that the most preferred placemaking option is the addition of flower baskets and the least preferred option is the addition of footprints that highlight safe routes to schools.

Q4: Please share any further details about your selections:

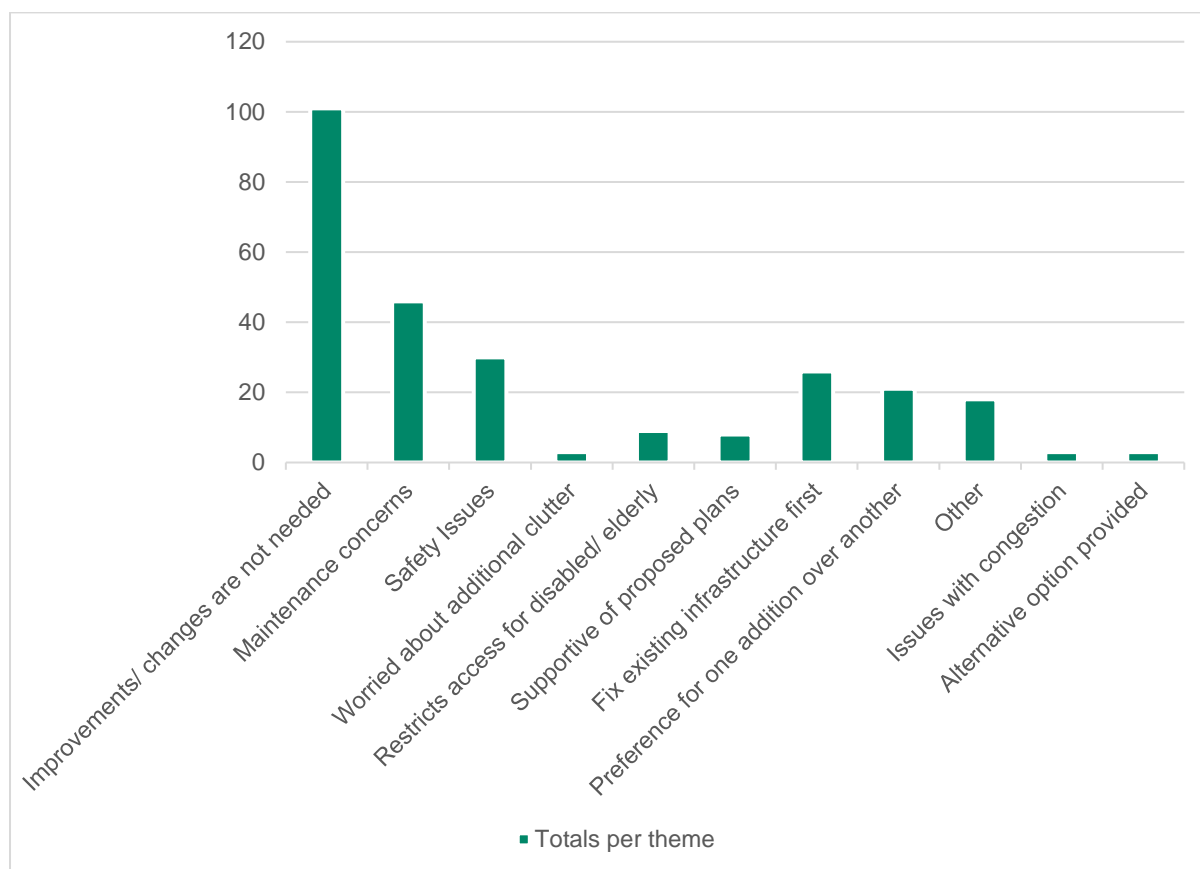


Figure 8 – Themed Responses

Responses from Question 4 were grouped into similar themes. Figure 7 shows the most common themes brought up by participants. Within the 305 responses that we received; 101 responses commented that changes were not needed. There was also some concerns about maintaining any placemaking furniture that would be implemented.

6.2 Saughton Road North Shops

Q5: For each of the proposed changes listed below, and shown on the image above, please rank them in the order of which you like the most to the least. The most liked would be ranked 1 and the least liked ranked 4.

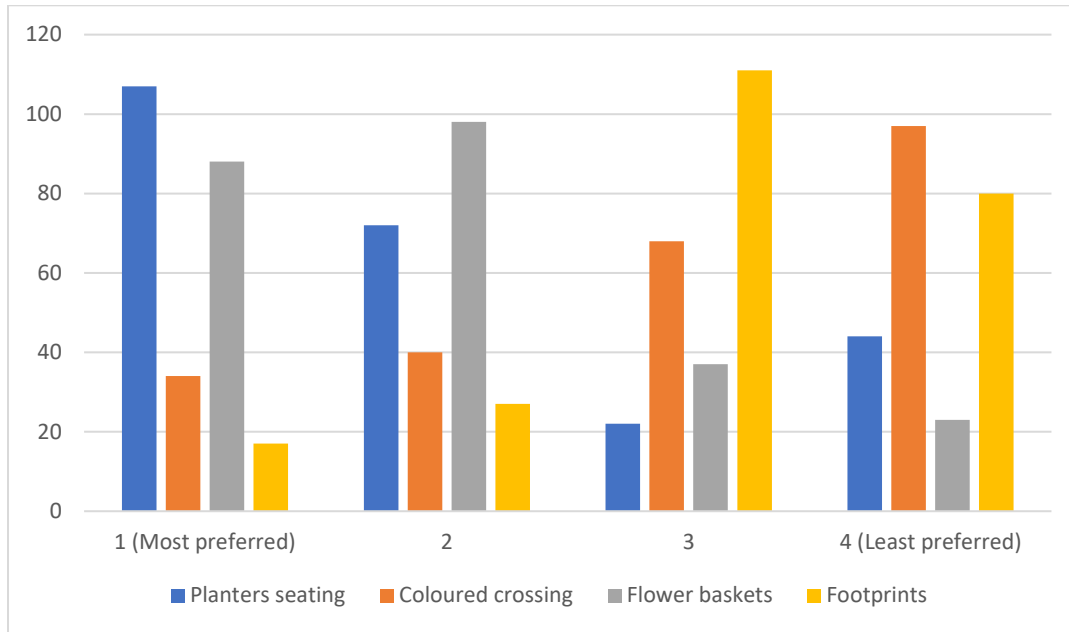


Figure 9 – Most to Least Preferred Placemaking Options for Saughton Road North Shops

Figure 8 shows that the most preferred placemaking option for Saughton Road North Shops is the addition of Planters and seating, followed by flower baskets. The least preferred option is the addition of a coloured crossing, followed by footprints.

Q6: Please share any further details about your selections:

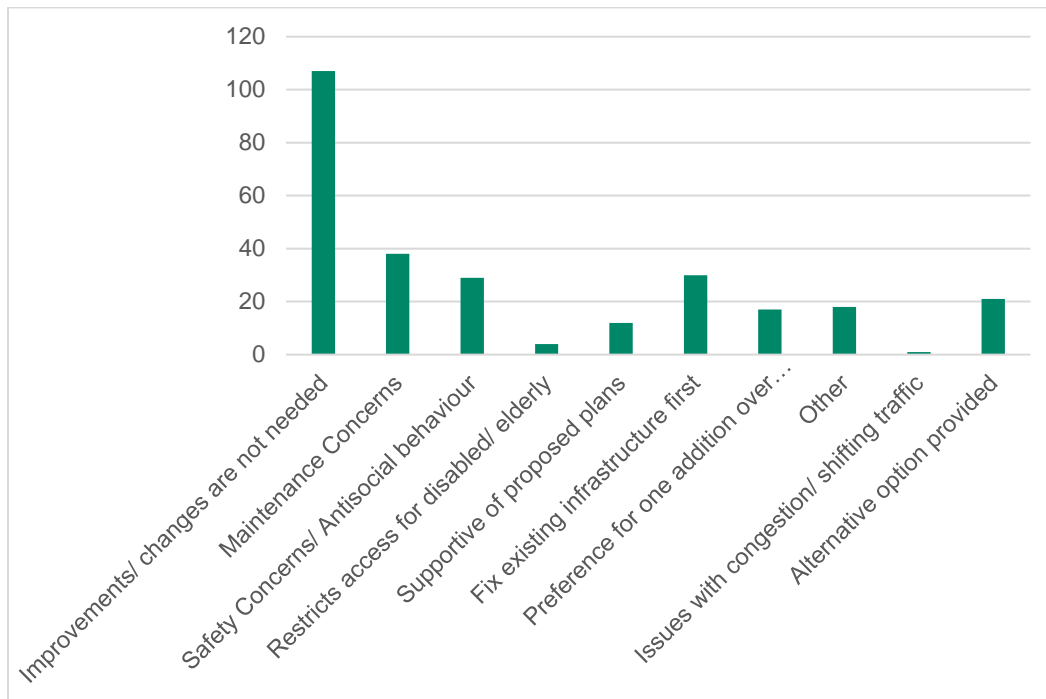


Figure 10 – Themed Responses

Responses from Question 6 were grouped into similar themes. Figure 7 shows the most common themes brought up by participants. Within the 305 responses that we received; 107 responses commented that changes were not needed. There were also some concerns about maintaining any placemaking furniture that would be implemented.

6.3 Featherhall Pocket Park

Q7: Please select which option you prefer:

Option 1 - Vibrant and Playful

Option 2 - Green and Restorative

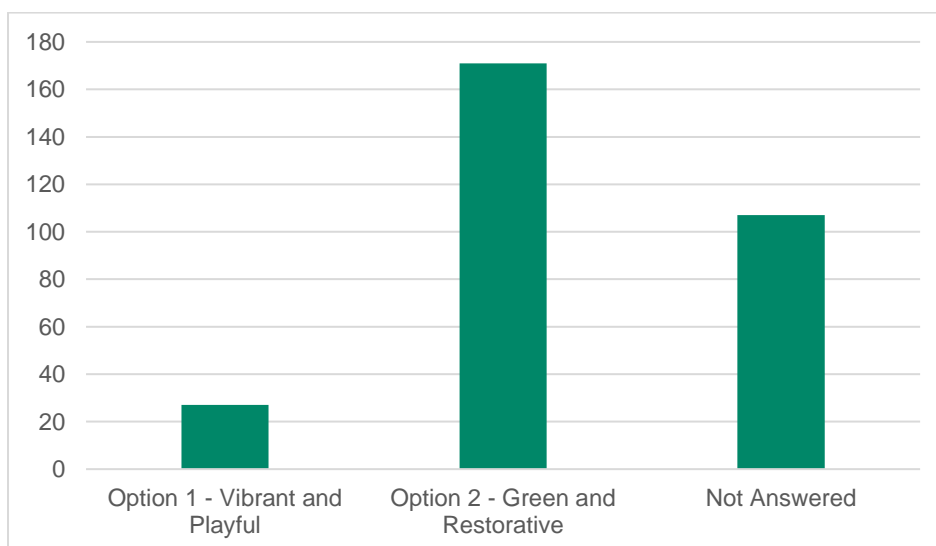


Figure 11 - Preferred Option for Featherhall Pocket Park

Figure 10 shows that an overwhelming majority of respondents picked Option 2 for the Pocket Park at Featherhall with 171 responses. 27 people chose Option 1 while 107 did not answer.

Q8: Please share any further details about your selection:

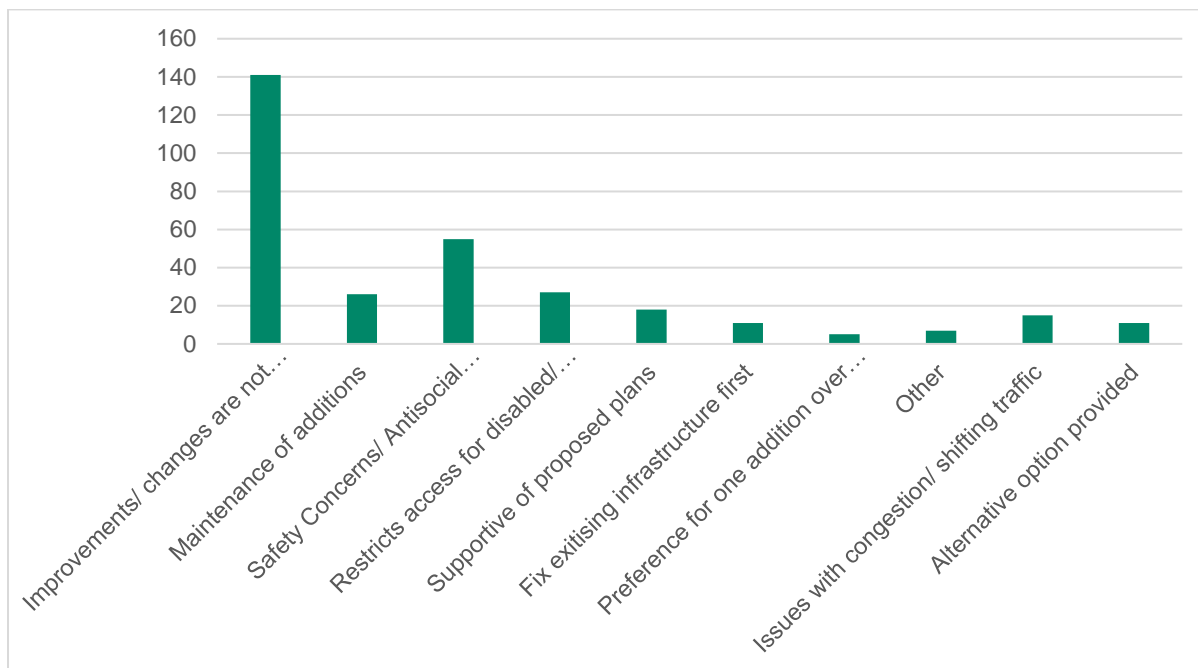


Figure 12 - Themed Responses

Responses from Question 8 were grouped into similar themes. Figure 11 shows the most common themes brought up by participants.

6.4 Placemaking across the LTN

Q9: Please let us know of any locations where you would like to see placemaking improvements and what these improvements could be.

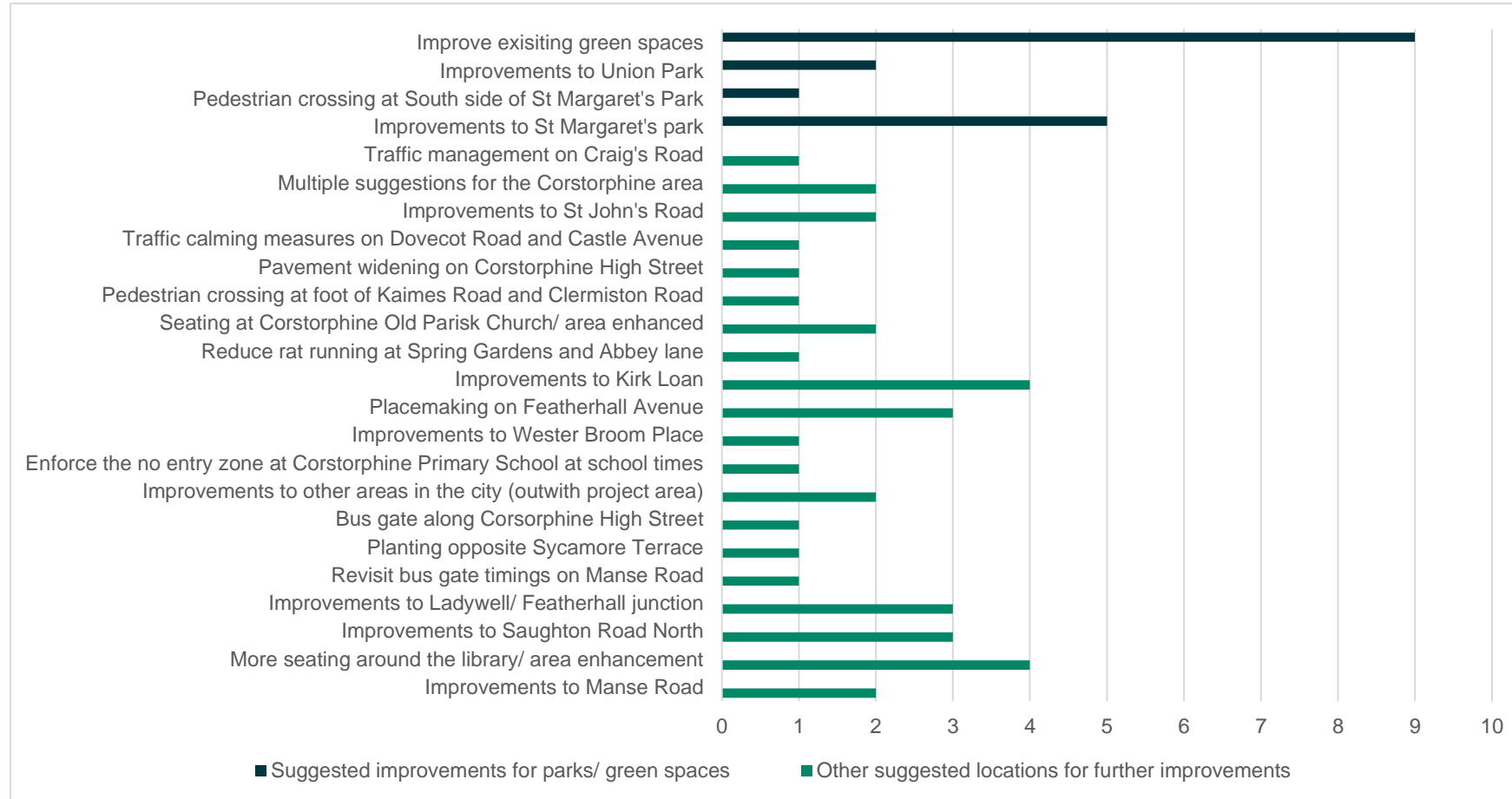


Figure 13 - Other Locations Suggested by Respondents for Placemaking

In response to Question 9, 54 locations were identified for placemaking as shown in Figure 12. The 2 most common locations suggested were the already established parks in the Corstorphine area, Union Park and St. Margaret's Park with 9 and 5 suggestions, respectively. The most common locations suggested that were not related to park or green spaces was Featherhall Avenue and the area surrounding the library, with 4 comments each. The above 54 locations were mentioned in response to the question. Around half of the responses commented that no changes to placemaking were required.

Appendix A

A.1 Survey

27/10/2021, 15:54

Print Survey - City of Edinburgh Council - Citizen Space

Corstorphine Connections - Low Traffic Neighbourhood Placemaking Engagement

Overview

This engagement is asking people to share their views about the design ideas being put forward for improving the look and feel of streets, referred to as 'placemaking', within the Corstorphine Low Traffic Neighbourhood (LTN) area. These design ideas can be viewed in 'Related' section below.

Why your views matter

We will use this feedback to help inform the placemaking designs that are proposed to be implemented as part of the trial Corstorphine LTN.

Welcome to our survey!

Thank you for taking an interest in our project.

Before undertaking the survey please thoroughly read the design ideas document (see the 'Related' section below), which includes the reasons why we are proposing these placemaking changes.

This survey is to help us understand and consider all the views about the proposed placemaking changes. We will use this feedback to help inform the placemaking design changes that are proposed to be implemented as part of the trial Corstorphine Low Traffic Neighbourhood (LTN).

The survey should take around 10-15mins to complete.

Corstorphine Connections

The Council is developing LTNs to create a safer and more comfortable environment for walking, cycling, wheeling and spending time in local streets and outdoor spaces. The projects build upon the City of Edinburgh Council's City Mobility Plan (see the 'Related' section below) which aims to make travelling around Edinburgh more environmentally friendly, healthy and accessible.

Data protection

The information that you share with us will be used by the Council and its project partners, Aecom and Sustrans, to inform the development of this project. At the end of the project all records will be permanently removed. If you wish to be removed for the mailing list, or have any of your details removed or amended, please contact martyn.lings@edinburgh.gov.uk.

If you have any queries about the survey please contact martyn.lings@edinburgh.gov.uk.

Results of the survey will be shared via the same consultation webpage in due course.

Related

[Design Ideas, Placemaking, Corstorphine LTN](#) <user_uploads/ppcor-placemaking-design-boards--hub-version-.pdf>

[City Mobility Plan](http://www.edinburgh.gov.uk/city-mobility-plan-1) <http://www.edinburgh.gov.uk/city-mobility-plan-1>

Previous Corstorphine LTN engagement:

[Corstorphine Connections Stage 2 – Engagement Report](#) </sfc/low-traffic-
neighbourhoods/supporting_documents/60636731_Corstorphine%20Connections_Stage%20%20Report_v3.0_20210813.pdf>

[Corstorphine Connections Design Workshop Introduction Slides](#) </sfc/low-traffic-
neighbourhoods/supporting_documents/Corstorphine_Design%20Workshop_Intro%20Slides_PDF.pdf>

[Corstorphine Connections Design Workshop Breakout Slides](#) </sfc/low-traffic-
neighbourhoods/supporting_documents/Corstorphine_Design%20Workshop_Breakout%20Slides_PDF.pdf>

[Corstorphine Connections](#) </sfc/corstorphine-connections>

1 What is your post code?

Name

2 What is your email address?

If you enter your email address then you will automatically receive an acknowledgement email when you submit your response.

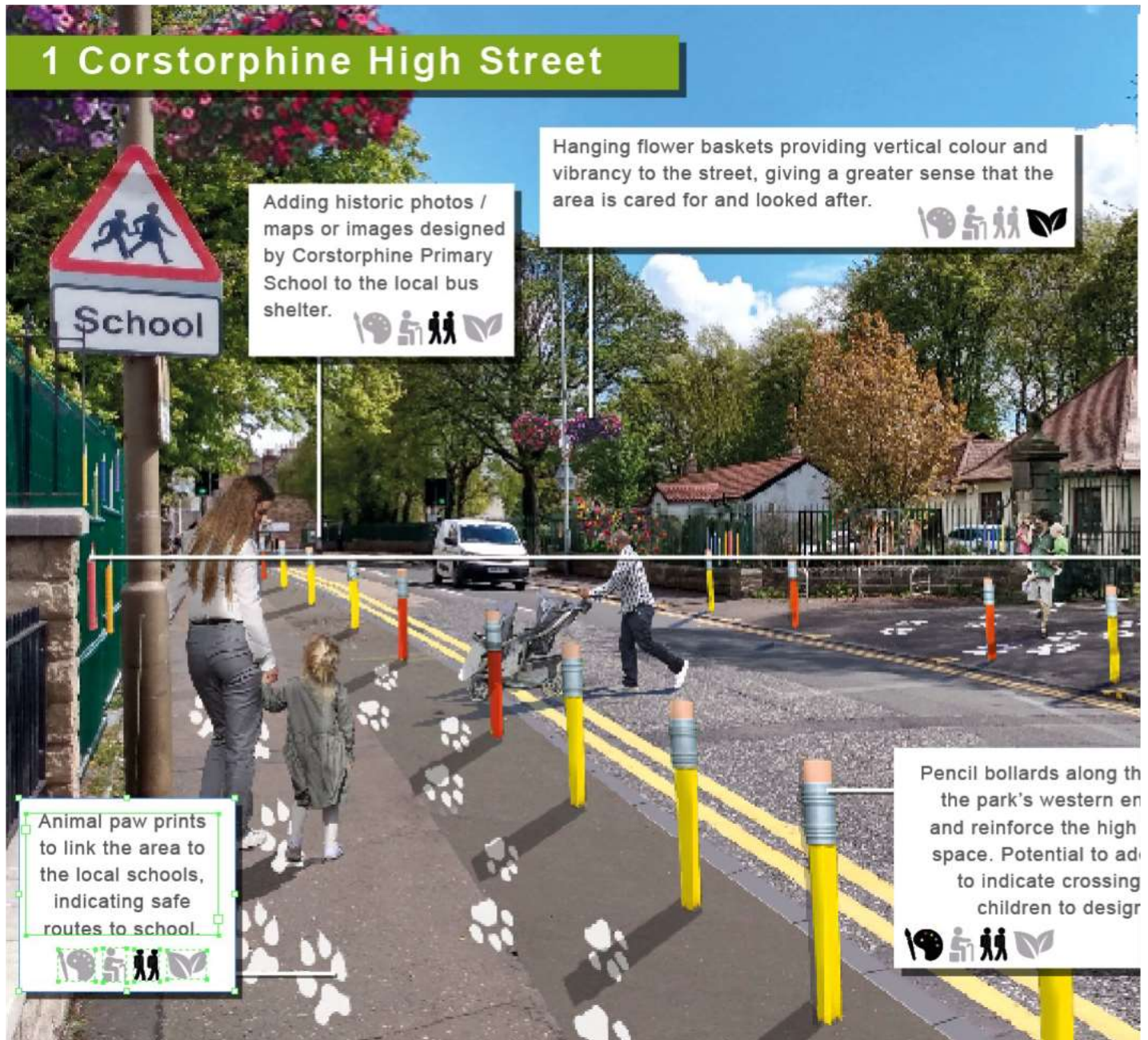
Email

27/10/2021, 15:54

Print Survey - City of Edinburgh Council - Citizen Space

Corstorphine High Street

Within the widened footway space that we are creating along the Corstorphine High Street, we are proposing the following changes to make the street even more vibrant, green and engaging, particularly for children. The bollards will also help protect the pavement space from illegal parking. These proposals have been developed from key themes that emerged in the previous rounds of engagement, including our recent engagement with the local primary school children.



27/10/2021, 15:54

Print Survey - City of Edinburgh Council - Citizen Space

3

For each of the proposed changes listed below, and shown on the image above, please rank them in the order of which you like the most to the least. The most liked would be ranked 1 and the least liked ranked 4.

	1	2	3	4
Wayfinding prints on the pavement (such as those shown in the image above) <i>Please select only one item</i>	<input type="radio"/>	<input type="radio"/>	<input type="radio"/>	<input type="radio"/>
Hanging flower baskets <i>Please select only one item</i>	<input type="radio"/>	<input type="radio"/>	<input type="radio"/>	<input type="radio"/>
Pencil shaped bollards <i>Please select only one item</i>	<input type="radio"/>	<input type="radio"/>	<input type="radio"/>	<input type="radio"/>
Local artwork on railings <i>Please select only one item</i>	<input type="radio"/>	<input type="radio"/>	<input type="radio"/>	<input type="radio"/>

4 Please share any further details about your selections:

27/10/2021, 15:54

Print Survey - City of Edinburgh Council - Citizen Space

Saughton Road North Shops

Within this area we are proposing the following changes to help make the street safer, more vibrant, greener and engaging, particularly for children. This builds on some of the key themes from the previous rounds of engagement, including our recent engagement with the local primary schools.



27/10/2021, 15:54

Print Survey - City of Edinburgh Council - Citizen Space

5

For each of the proposed changes listed below, and shown on the image above, please rank them in the order of which you like the most to the least. The most liked would be ranked 1 and the least liked ranked 4.

	1	2	3	4
Planters and seating <i>Please select only one item</i>	<input type="radio"/>	<input type="radio"/>	<input type="radio"/>	<input type="radio"/>
Colourful surfacing across the car park entrance <i>Please select only one item</i>	<input type="radio"/>	<input type="radio"/>	<input type="radio"/>	<input type="radio"/>
Hanging flower baskets <i>Please select only one item</i>	<input type="radio"/>	<input type="radio"/>	<input type="radio"/>	<input type="radio"/>
Wayfinding prints on the pavement (such as those shown in image above) <i>Please select only one item</i>	<input type="radio"/>	<input type="radio"/>	<input type="radio"/>	<input type="radio"/>

6 Please share any further details about your selections:

27/10/2021, 15:54

Print Survey - City of Edinburgh Council - Citizen Space

Featherhall Pocket Park

Through closing this section of the street we have the opportunity to create a pocket park. Based on themes from the previous rounds of engagement, including our recent engagement with the local primary schools, we are proposing two options:

Option 1: Vibrant and playful



27/10/2021, 15:54

Print Survey - City of Edinburgh Council - Citizen Space

Option 2: Green and restorative



7 Please select which option you prefer:

Please select only one item

- Option 1 - Vibrant and Playful
- Option 2 - Green and Restorative

8 Please share any further details about your selection:

27/10/2021, 15:54

Print Survey - City of Edinburgh Council - Citizen Space

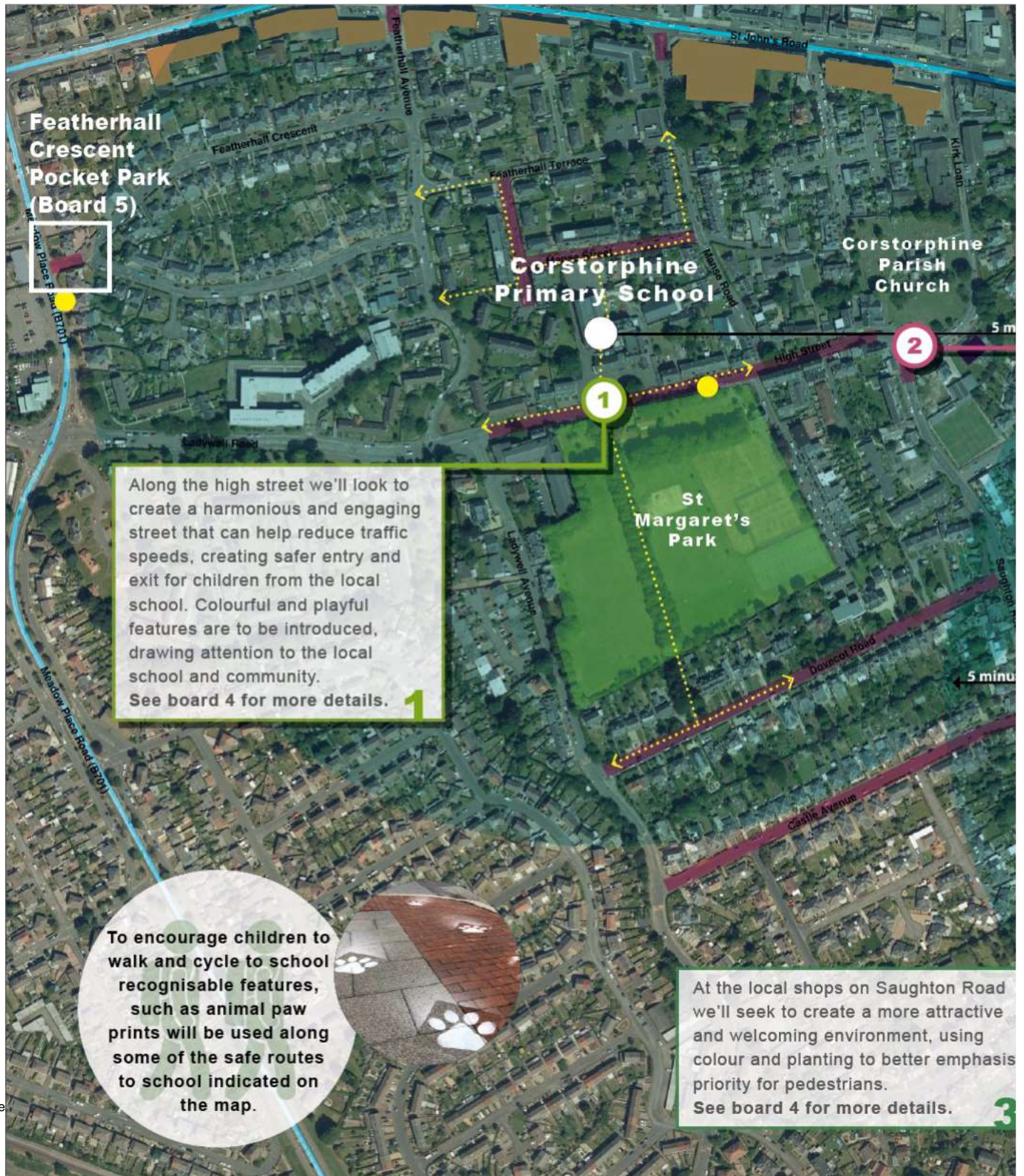
Placemaking across the LTN area

In addition to the placemaking on High Street, Saughton Road North and Featherhall Crescent, we are also planning to introduce street improvements at Kirk Loan, on local bus shelters and at the existing local School Streets (see image below).

At Kirk Loan we are proposing introducing seating and box or railing planters, while on bus shelters in the area we are considering adding vinyl prints of either historic photos/maps or pictures created by local school children.

The School streets designs are being developed with input from the local school children to create a more vibrant, safe and interesting space for children. This input has identified some key routes children take to school. We propose to make some of these routes more engaging by adding additional wayfinding markers, such as the animal prints previously shown. You can view some of the children's design ideas via the video in the 'Related Information' section below.

Budgets permitting there may be opportunities to introduce placemaking improvements in other areas of the LTN.



27/10/2021, 15:54

Print Survey - City of Edinburgh Council - Citizen Space

-  Shops
-  Key Routes to School
-  5 minute walking distance
-  Potential bus shelters for historic vinyls
-  Traffic Management Proposals (please ask a member of team for further details)

Related information

Video <https://youtu.be/FkkUJo_wQrE> of local primary school children's' placemaking ideas.

- 9** Please let us know of any locations where you would like to see placemaking improvements and what these improvements could be.

Please share details about your suggested placemaking locations and ideas

