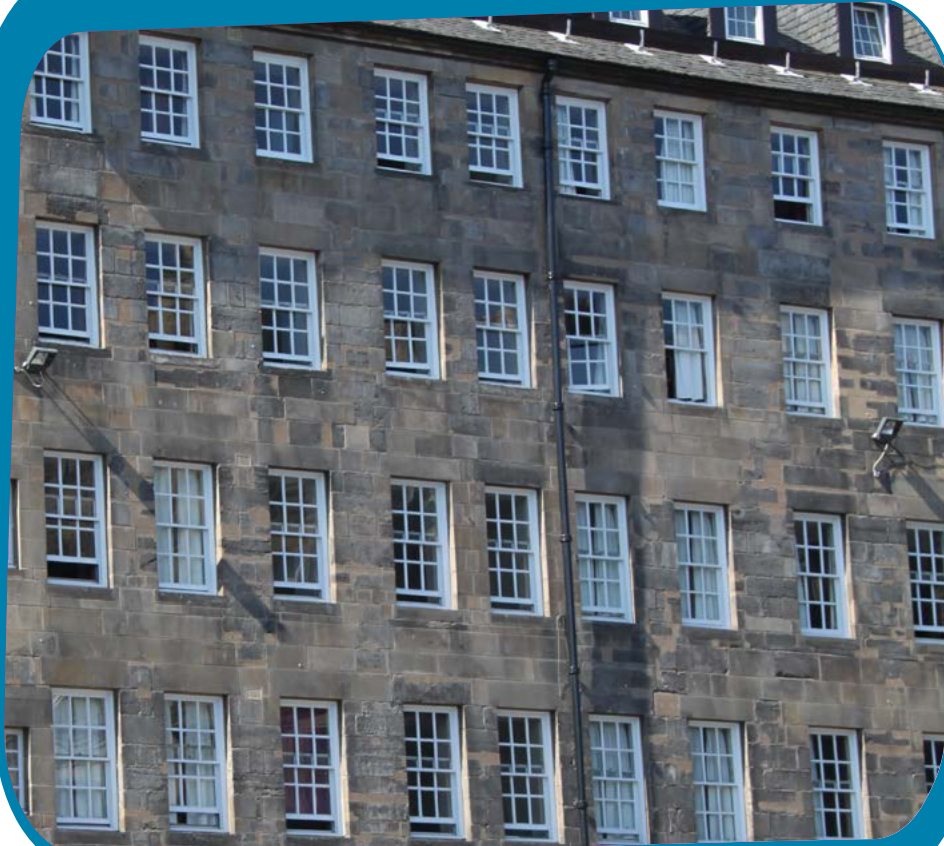


quick guide to

Windows

This 'quick guide' will help you work out whether you need permission for new windows and how you can apply.



Do I need to apply for planning permission to replace my windows?

In most cases you do not need planning permission to replace existing windows.

However, you should apply for planning permission where you are changing the overall external appearance of the building in a conservation area e.g. replacing timber with UPVC or changing the original design.

If the windows are in a listed building, you will normally require listed building consent to replace or alter these. If you are installing double glazing in a listed building you will require listed building consent.

If your property is not in a conservation area or is not a listed building then you do not need planning permission to replace your windows.

Check if your building is in a conservation area or is a listed building - www.edinburgh.gov.uk/conservation

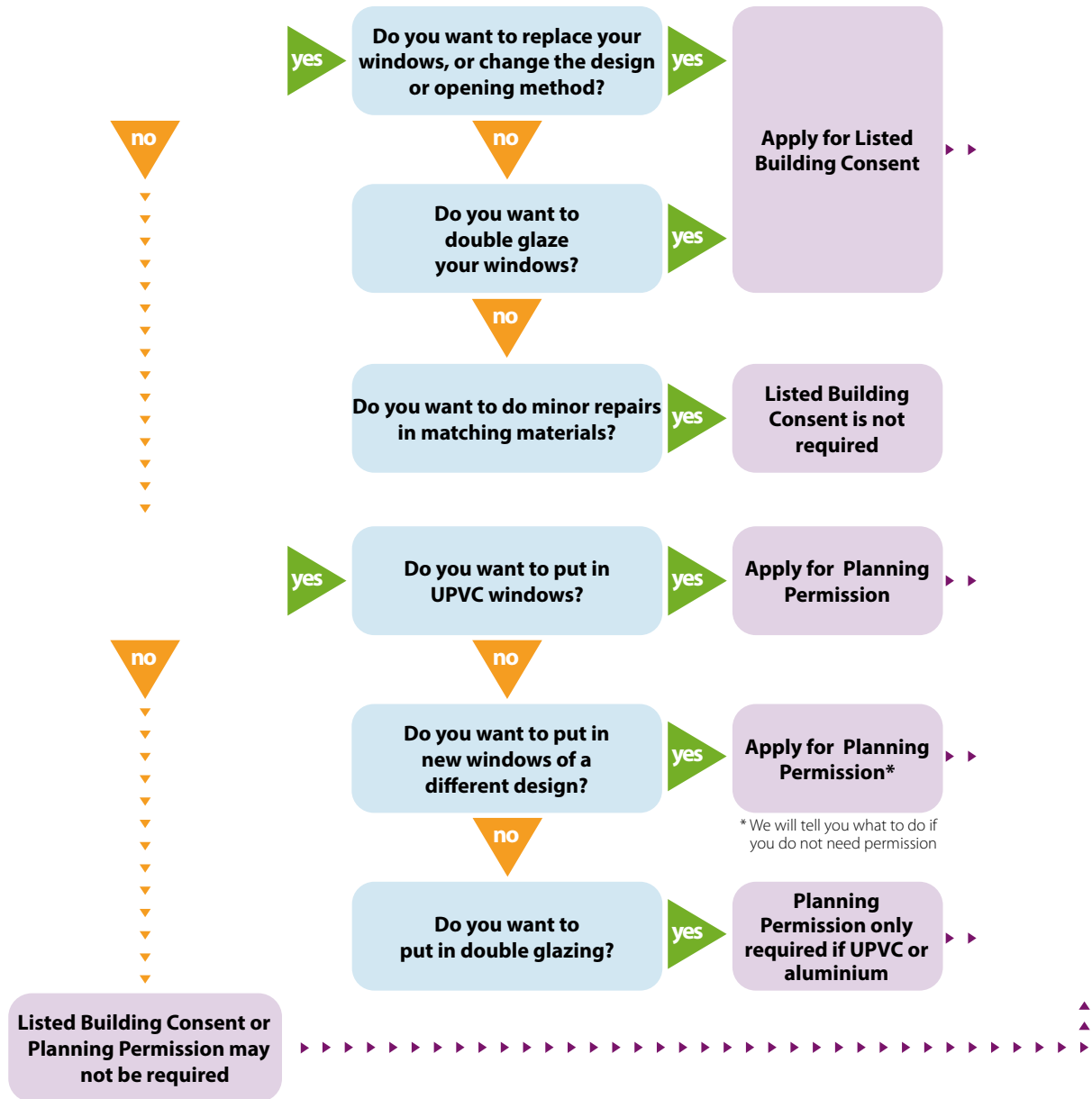
Read our guidance on replacement windows - www.edinburgh.gov.uk/planningguidelines

- Guidance for Householders
- Guidance for Listed Buildings and Conservation Areas

How do I apply for permission?

Planning permission, listed building consent and certificates of lawfulness can be applied for online - www.eplanning.scot

I want to change my windows



*How can I confirm that new windows do not require planning permission?

To get written confirmation that what you are doing is legal and you do not require planning permission you can apply for a Certificate of Lawfulness.

You can do this **online** and you will get a decision from us on whether permission is required.

This certificate can be used to confirm you do not need permission. It can also be useful should you decide to sell your property or if you are asked if you have permission to replace your windows. Please note that a Certificate of Lawfulness involves a fee.

Do I need a building warrant for replacement windows?

You do not normally require a building warrant to replace existing windows as long as the standard of the new windows is no worse than they are at present. Our website has a link to the Technical Standards where you can read more detail about windows and how to apply if you require a warrant.

www.edinburgh.gov.uk/buildingwarrants