

***King George V and
Scotland Yard Parks
Management Plan***

2025 – 2030

Our vision...

“... to establish King George V and Scotland Yard Parks as sustainable, safe and enjoyable greenspaces to suit modern needs whilst maintaining the traditional aspects of a park steeped in history.”

INVERLEITH

NEIGHBOURHOOD
PARTNERSHIP



Table of Contents

Scope of the Management Plan	4
Green Flag Award Scheme	4
 <u>Where are we now?</u>	
Site Name	5
Site Description/Introduction	5
Facilities	5
Site Location	6
Adjacent Landowners	6
The Historic Environment	7
Conservation Status	10
 <u>Area Committee and Ward</u>	
Elected Members	10
 Links with Local Strategies and Policy	 11
 <u>Legislative Responsibilities</u>	
Dog Fouling (Scotland Act) 2003	11
Land Reform (Scotland) Act 2003	12
The Disability Discrimination Act (DDA) 1995	12
Children's Play Area – The European Safety Standard	12
 <u>Site Surveys and Assessments</u>	
Tree surveys	13
 <u>Friends Group</u>	 13
 <u>Public Safety and Security</u>	
Vehicles	14
Lighting	14
Park Management Rules	14
Paths	14
 <u>Recent Improvements to the Park</u>	 15
 <u>Where we want to be?</u>	
<u>Analysis and Evaluation</u>	
A Welcoming Place	16
Healthy, Safe and Secure	17
Well Maintained and Clean	19
Sustainability	20
Conservation and Heritage	21
Community Involvement	22
Marketing and Promotion	23
Management	24

<u>Management Structure</u>	25
<u>How Will We Get There?</u>	
Development Plan	26
<u>Finance</u>	
Revenue funding	31
Capital Funding	31
Grants	31
<u>How will we know when we have arrived?</u>	
Monitoring and Reviewing	32
Measures of success	33
<u>Appendices</u>	
Historical Maps	35
Tree survey	37

Scope of the Management Plan

This Management Plan is intended to cover the period from 2025 – 2030. The plan is a site specific document produced by The City of Edinburgh Council, North West Parks Team. It is intended to offer guidance to all aspects of the management, maintenance and development of King George V and Scotland Yard Parks (hereafter referred to as the Park), providing a framework within which all future management is carried out. The plan enables an understanding on how and why decisions are taken, in relation to the reasoning behind the policies and proposals for action.

Despite the range and number of suggested actions that could be undertaken within the Park, this plan is meant to be implemented under the reality of financial restrictions and limited staff availability, therefore the actions are focused and those included are specific, realistic and achievable.

A yearly report on the actions of the development plan should be undertaken and recorded to ensure knowledge of actions and objectives is kept up to date. The management plan should be reviewed annually to take into account any major changes that may affect operations.

Green Flag Award Scheme

The Green Flag Award is the benchmark national standard for parks and green spaces in the United Kingdom.

It was first launched in England and Wales in 1996 to recognise and reward the best green spaces in the country.

The first awards were given in 1997 and, many years later, it continues to provide the high level of quality against which our parks and green spaces are measured. It is also seen as a way of encouraging others to achieve high environmental standards, setting a benchmark of excellence in recreational green areas. The Green Flag Award Scheme began in Scotland in 2008.

Awards are given on an annual basis and winners must apply each year to renew their Green Flag status.

Where are we now?

1.1 Site Name

King George V and Scotland Yard Parks

1.2 Site Description/Introduction

A pleasant, small park (1.773 acres) of winding paths, shrubberies, trees and lawns set in an interesting and historic part of the city.

The park attracts all sections of the community. Some come for a stroll, to walk the dog, to picnic at lunchtime, read their newspaper or to catch the sun and to enjoy some green space in a heavily built up part of town. A number are just passing through as a shortcut up to Royal Circus and Scotland Street. It is also a busy hub for cyclists since the reopening of Rodney Street Tunnel, which connects the park to Golden Acre path, part of the North Edinburgh Cycle Network.

The Park is well used and well regarded locally and this along with a number of facilities provides a destination for passive and active recreation. The Park accommodates a variety of uses and activities including a much loved toddler play area, teenage zone, basketball court and table tennis. It is a popular place for walking, jogging, exercising dogs and relaxing.

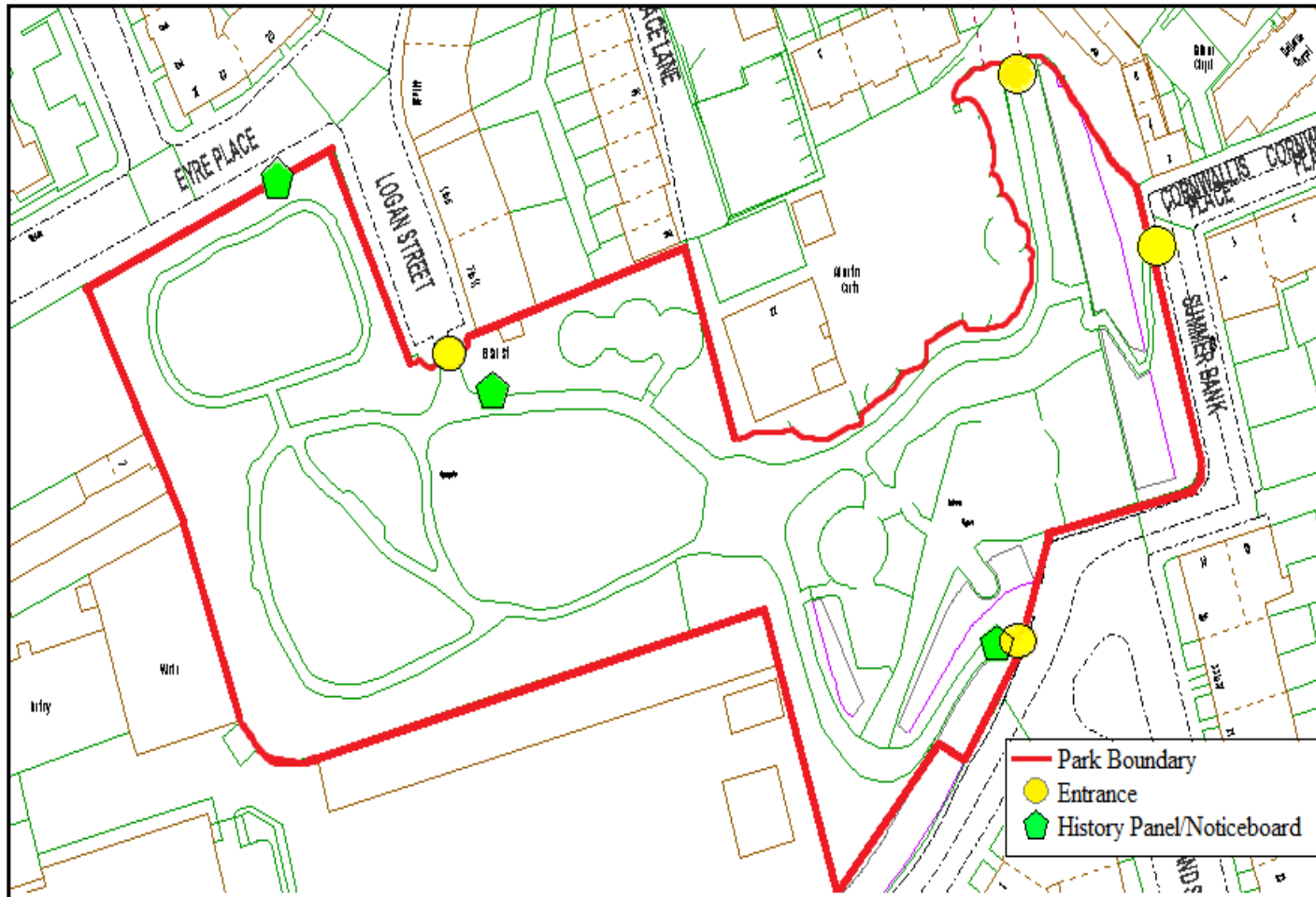
Neighbouring the Park is “The Yard” a purpose built indoor and outdoor adventure playground for children and young people with additional support needs.

The Park is freely accessible at all times.

Facilities

Play areas for toddlers, juniors and teenagers
Football and Basketball court
Concrete table tennis table
Teenage shelter
Perimeter shrub and tree planting
Spring bulbs: Snowdrops and Crocus
Seats and bins
Lighting
Path network

Site Location



Adjacent Landowners

Eyre Place, Logan Street, Eyre Place Lane and The Yard run along the northern edge of the park. Land to the West and South of the park is owned by The Royal Bank of Scotland. Royal Crescent also shares this Southern boundary. Summer Bank and Cornwallis Place are located along the Eastern boundary of the park.

National Grid Reference:
NT 25311 74885

Historical maps of the site are shown in Appendix 1.

The Historic Environment

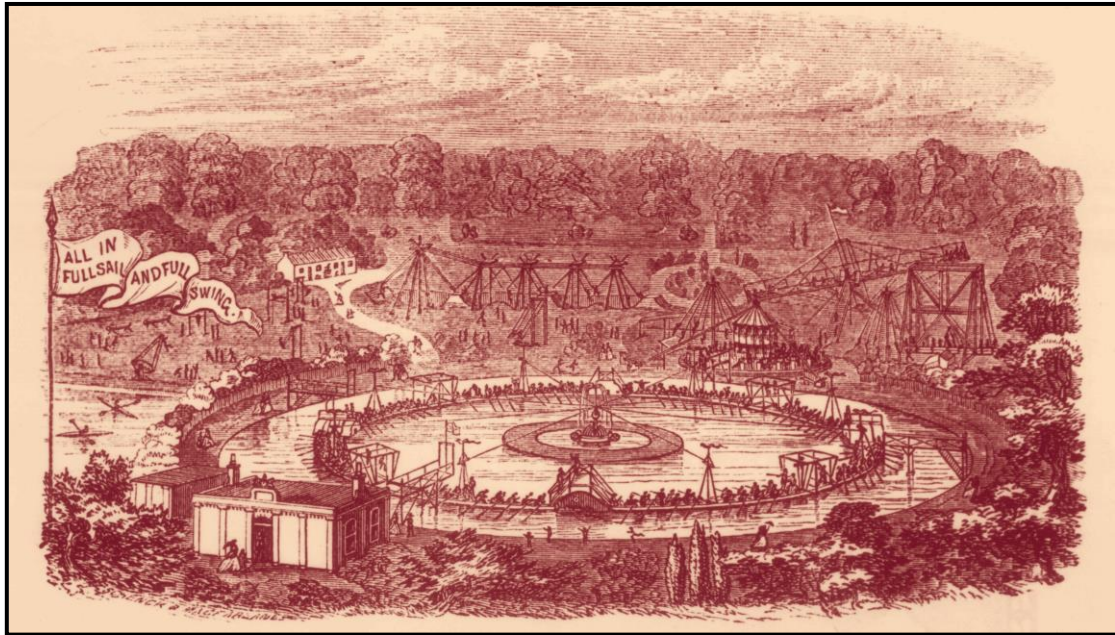
King George V Park and surrounding area was occupied by The Canonmills Loch. This Loch was fed from two mills leads, diverted from the Water of Leith at Stockbridge. In hard winters, the Loch became the home of the Canonmills Curling Club, claimed to be the oldest of its kind. Canonmills Loch was drained in 1847.



*Etching of Canonmills, by John W. Ewbank, 1825.
Reproduced courtesy of www.capitalcollections.org.uk*

In 1860, thirteen years after Canonmills Loch was drained, the marshy land of the Haugh was also drained, making way for the ‘Gymnasium’ created by John Cox, an Edinburgh philanthropist. He designed it as somewhere for people to exercise and enjoy themselves at an affordable price.

Opened in April 1865, it contained some ingenious apparatus including a giant see-saw for two hundred people, a bicycle roundabout and a pendulum swing. In the summer, events with bands and shows were provided in a show hall. In the winter, bands played for skaters on a flooded and frozen area, which was illuminated in the evenings by coloured lights.



The Royal Patent Gymnasium

The main attraction at the Gymnasium was the Great Sea Serpent. It consisted for a 60 foot (18.2 metre) wide wooden 'boat' on a circular pond, 471 feet (143.5 metres) in circumference and held fast by wire ropes attached to a central pivot. This massive structure accommodated 600 seated rowers, with 250 paddlers and 8 paddle wheels to get the boat rotating in an undulating motion. The only one of its kind in Britain, the Gymnasium was very popular but suffered in the winter weather and was eventually replaced by the St Bernard's football ground.

Said to be descended from teams of the Third Edinburgh Rifle Volunteers, the 'Saints' took their name from St Bernard's Well by the Water of Leith at Stockbridge. Established in 1878, they moved from Stockbridge to the old Gymnasium site in 1880. Due to the remains of the apparatus still being present, the site was cramped and between 1889 and 1902 the team played in several other locations. During the First World War play was suspended. The ground was requisitioned and used for other purposes. However, in 1922 the site was bought back and again developed with a larger grandstand. But once again a World War intervened and the team never recovered. The last match was played in 1942 and the stands dismantled in 1947. The last surviving reminder of the club's existence is the gate at Royal Crescent that led down to the stands.



Plans for a railway line from Granton and Newhaven to Waverley were authorised in 1836 and a track laid in 1842. It passed through a tunnel under Rodney Street and through the south eastern corner of the Haugh where the Scotland Street Station was built.



*Rodney Street Tunnel.
Photograph reproduced courtesy of Stenlake Publishing Ltd*

The Scotland Street Tunnel ceased to be used as a passenger railway line in 1868 following the addition of a new line to Abbeyhill and Trinity. It continued to be used as a coal storage and railway depot until the 1960s, when the track was lifted. Far from sitting idle, the tunnel has been used intermittently for a variety of purposes. It was the city's largest air raid shelter in WW2 with fresh water, drainage, electricity and space for 3,000 people. It was also used for various mushroom growing attempts in the late 19th and early 20th centuries, a radiation testing area by the University of Edinburgh in 1948 and as a vehicle storage area for Cochrane Garages Ltd in the 1980s.

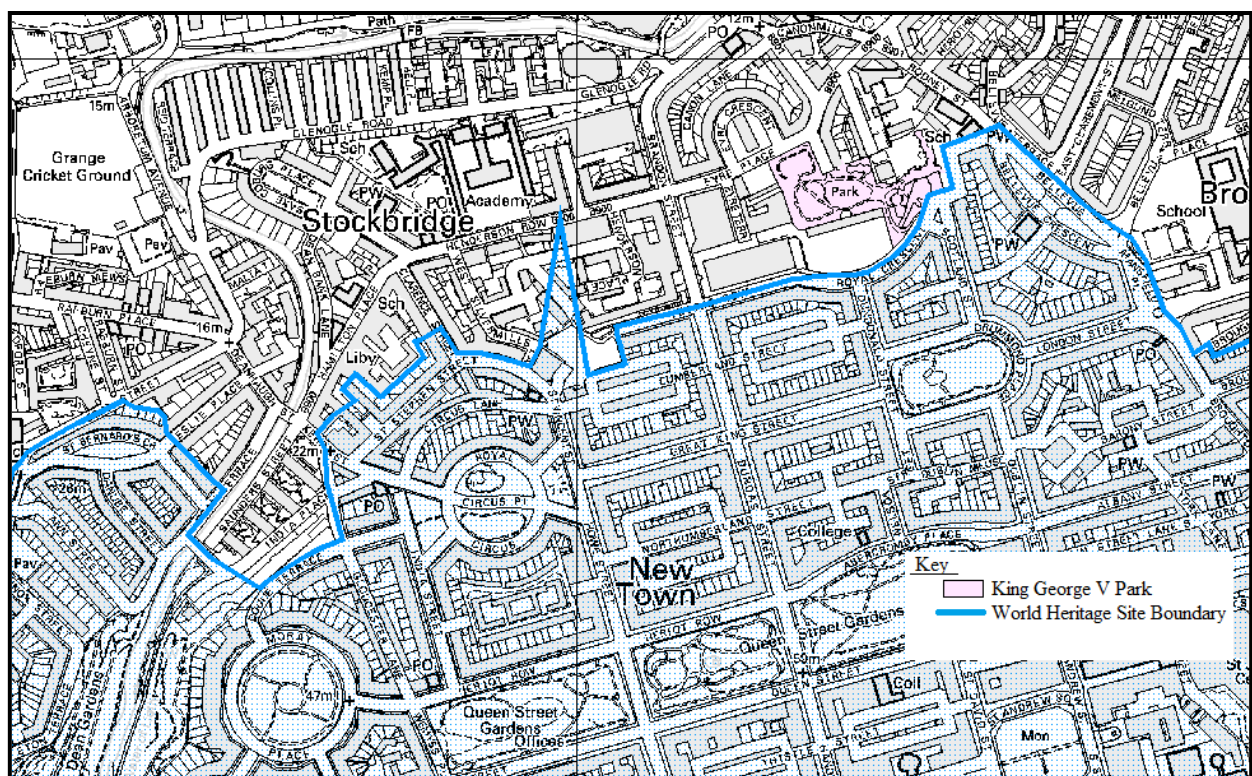
After the death of King George V on 20th January 1936, a National Memorial Fund Committee raised funds to purchase the playing fields in his memory. With the assistance of a grant, the Edinburgh Corporation purchased the St Bernard's football ground to create a new King George V Memorial Field or Park. The site was transformed to include tennis courts, a putting green and playground. It was opened in 1950 by the Duke of Buccleuch, the President of the Scotland branch of the National Playing Fields Association, now Fields in Trust.

A concerted community effort in the early 1980s led to a complete reconfiguration and regeneration programme being undertaken by the then City of Edinburgh District Council and a derelict space was transformed. However, subsequent years of neglect took their toll and by 2002 the park had become run down once again. At this point a group of concerned local residents formed the Friends, with the aim of working with the City of Edinburgh Council to improve the appearance of the park and the facilities it offered people of all ages.

Conservation Status

The Park is classified within the Edinburgh Public Parks and Gardens Strategy as a “City Park”. City Parks are defined as” Parks providing facilities that are used by people who may live anywhere in the city. These are likely to be larger in size and the facilities provided will be more specialised, with many including sports pitches and other formal facilities. However, these parks may also function as the Community Park for some people by virtue of their location and the absence of other smaller areas. Access will be by car, bus, bicycle or on foot.

The Park is located just outside a World Heritage Site but within a Conservation Area. Scotland Street Tunnel 1965 and Rodney Street Tunnel 1974 are listed structures.



Area Committee and Ward

Inverleith Ward Ward Councillors: - Hal Osler (Scottish Liberal Democrats)
Vicky Nicolson (Scottish National Party)
Max Mitchell (Scottish Conservatives)
Jule Bandel (Scottish Green Party)

MSP – Ben MacPherson (Edinburgh Northern and Leith, Scottish National Party)

MP – Tracy Gilbert (Edinburgh North and Leith, Labour Party)

Local Strategies and Policy

There are many Council policies and plans (available on request) which are relevant to the Park, these include the following:

Corporate Strategies and Policies

- City of Edinburgh Council Strategic Development Plan 2019 – 2022
- City Plan 2030
- City Plan 2040
- Edinburgh Local Development Plan (2016)
- Accessibility: Access Strategy for Edinburgh
- Climate Strategy 2030
- Energy Policy
- Play Area Action Plan (2011 – 2016)

Park and Environmental Policies

- Edinburgh Public Parks and Gardens Strategy (2006)
- Edinburgh Open Space Strategy (2021)
- Edinburgh Biodiversity Action Plan 2022 – 2027
- Edinburgh Parks Events Manifesto (2014 under revision)

Neighbourhood Priorities

- Northwest Locality Improvement Plan 2017 - 2022

Detailed information on each of the policies above can be viewed in the Strategic Parks Management Information for North Edinburgh.

Legislative Responsibilities

As land owner and manager of the Park, the City of Edinburgh Council has many legal responsibilities. The relevant Act's are listed below;

Dog Fouling (Scotland Act) 2003

Aim: This Act has two principal aims. The first; to amend the offence of dog fouling so that the offence consists of failing to clear up after a dog rather than of allowing a dog to foul. The second; to establish new enforcement provisions in connection with the offence by enabling local authorities and police constables to issue fixed penalty notices to persons suspected of committing the offence.

Relevance: One of the many user groups who use this area does so for the purpose of walking their dog.

Land Reform (Scotland) Act 2003

Aim: Part 1 of the Act establishes a right of access to most of Scotland's Countryside and Open Water, for recreational, educational and certain other purposes and a right to cross such land. These rights exist only if they are exercised responsibly. Some of the provisions for that purpose are also extended in relation to rights of way and other rights. Part 1 of the Act also imposes certain duties on local authorities in relation to access on and over land and, in particular, requires them to draw up and adopt core paths plan for their area.

Relevance: Promotes responsible use of accessible land.

The Disability Discrimination Act (DDA) 1995

Aim: The DDA aims to end the discrimination that many disabled people have faced in the past and in some cases still do. This Act has been significantly extended; this includes the introduction of the Disability Discrimination Act 2005 which gives disabled people rights in the areas of: employment, education, access to goods, facilities and services. The Act now requires public bodies to promote equality of opportunity for disabled people.

Relevance: The majority of paths around the Park are tarmac or type one whin dust. These give easy access to people with mobility difficulties, wheelchairs or pushchairs. One of the entrances into the park is via a set of steps and step paths, not suited to people with mobility difficulties; these restrictions are due to terrain that cannot be modified enough to make access open to all.

Children's Play Area – The European Safety Standard

Aim: The Standard recognises the developmental importance of play and risk. It is felt that children need to experience risk and the Standard is designed to prevent injuries with a disabling or fatal result or where a child may receive an injury in the event of an incorrect judgement on their part. It cannot remove all possibility of injury. Parental or care giver supervision is seen as crucial in reducing injuries to very young children. Increased accessibility for children with disabilities has been borne in mind to provide a balance between safety and challenge.

The strategic vision for the Edinburgh Play Strategy is that:

Edinburgh will be a child friendly city where all children and young people have access to play opportunities which offer variety, adventure and stimulus. They will be able to play freely and safely and make choices about where, how and when they play.

Relevance: All City of Edinburgh Council Play Areas are designed in house to meet BS EN 1176 Parts 1 – 11. Prior to 1998 all play areas were designed to meet BS 5696. All play areas are held on a data base called Playsafe produced by Public Sector Software Ltd. This system holds information on all City of Edinburgh Council play areas, including; type of equipment, installation date, type of surface, fences and bins.

Site Surveys and Assessments

Tree Surveys

All trees within the Park are managed by the City of Edinburgh Council Forestry Section of Parks and Greenspace. Hazardous defects in trees are reported to the Forestry Department for inspection and action as required. A tree survey has been undertaken on all the trees within the Park and is shown in Appendix 2.

Friends Group

The Park is supported by the Friends of King George V and Scotland Yard Parks (hereafter referred to as The Friends); a voluntary community group who have been actively involved and consulted over past park management and development. The group were established in 2002 and membership of the Friends is open to anyone who cares about the park, whether they live or work in the area.

The cumbersome title assumed by the Friends of King George V and Scotland Yard Parks reflects the fact that the official name of the Park is the King George V Park, Eyre Place, whereas locally and unofficially it is known as Scotland Yard. The official name indicates that the western section of the Park came into being in the early post war years as a King George V Memorial Playing Field, with the National Playing Fields Association (now Fields in Trust) as its guardian trustees. The local name points to the origins of the eastern section which is the site of the former Scotland Street Goods Yard.

The objects of the Association are:

1. To conserve, preserve, protect and improve the area known as the King George V Park and Scotland Yard for the benefit of the public
2. To advance the education of the public about the history of the area
3. To promote provision of facilities which will encourage enjoyment and responsible use of the area by a wide range of the people who live and work in the locality

A newsletter is distributed twice a year and displayed in the park notice boards for the wider general public to view.

More information on the Friends Groups can be found on their website

<http://www.kgvsy.org.uk/>

Public Safety and Security

All users of the Park are responsible for their own health and safety, however, regular safety checks of the Park are made.

Informal inspections are carried out by Council employees who enter the play areas as part of their daily duties (Park Ranger, Playgrounds Maintenance Officer and Task Force staff). They report obvious hazards to the Council's workshop engineers. In-house ROSPA trained staff inspect the equipment on a monthly basis. Any defects identified are either repaired immediately or isolated and made safe, for repair at a later date. Written records of inspections and works undertaken are held with the Workshops at Inverleith Park. Annual inspections and risk assessments, conforming to the Register of Play Inspectors International (RPII), are carried out on all the playgrounds by a qualified RPII Inspector and the inspection conforms to the requirements of BSEN 1176-11.

Signs located on the play area fencing contain contact details should members of the public wish to report any damaged or broken play equipment.

Vehicles

Vehicular access to the Park is not permitted with the exception of authorised maintenance vehicles or where permission has been given to facilitate organised events. Vehicular movement is kept to a minimum at all times. There are no roads within the Park, however, access can be gained from the double gate off Logan Street or Royal Circus.

Lighting

Lighting exists throughout the Park; this is maintained by the Street Lighting Section of Roads Services. Any lighting issues can be reported to Clarence on 0800 23 23 23.

Park Management Rules

The site is governed by the City of Edinburgh Council's Management Rules for Public Parks and Greenspace, which are available to view in the Strategic Parks Management Information for North West Edinburgh. (Available on request)

Paths

The site is patrolled regularly by the City of Edinburgh Council and all the main paths are monitored and maintenance is planned accordingly. The responsibility for mechanically sweeping all tarmac paths lies with Street Cleansing.

Recent Improvements to the park

Improvements undertaken since 2015
New bins throughout
Rodney Street Tunnel officially opened providing access to the North Edinburgh Cycle Network
Additional noticeboard installed along Eyre Place
Circular bench and Judas tree, <i>Cercis siliquastrum</i>, planted in centre of park
Boundary railing replaced at Logan Street entrance
Noticeboard relocated to Royal Circus entrance
Green Action days with Bellvue Chapel
Youth Shelter repainted
Scotland Street Tunnel Brick Wall removed and replaced with a galvanised steel screen
Bulb planting with Friends Group - Crocus
Concrete table tennis installed - Action For Children helped with site clearance
Re-instate steps up to Summer Bank – Neighbourhood Environment Programme funded
‘No Dog’s signs erected on entrances to play areas
Bulb planting with Friends Group - Snowdrops
Plant up area near electricity box
Biffa and capital funding for new play equipment and seating/steps
Wildflower meadow created
Herbaceous perennials planted in bed at entrance on Logan Street entrance
Toddler play area painted
National Cycle Route drainage issue addressed

Where we want to be?

Analysis and Evaluation

A Welcoming Place

Objective

The overall impressions for any member of the community approaching and entering the Park should be positive and inviting, regardless of the purpose for which they are visiting.

Welcoming Entering the Park from Logan Street through the ornate entrance pillars, featuring a unicorn and lion, visitors are welcomed by one of the park's history panels. To the right of the entrance a landscaped herbaceous bed adds colour and interest before opening onto grass parkland. The most popular entrance to King George V Park is from Rodney Street Tunnel on the North East side of the park, opening up onto tarmac paths, raised beds and spring bulbs before the path meanders round to the children's play area. From the wide entrance on Scotland Street a noticeboard and history panel immediately catch the visitor's attention. From here the gentle sloping path overlooks the play area, leading to the centre of the Park and ornate circular bench. Recently refurbished steps from Summer Bank overlook the entire Park.

Good Safe Access Vehicular access to the Park is not permitted with the exception of authorised maintenance vehicles or where permission has been given to facilitate organised events. Vehicular movement is kept to a minimum at all times. While there is no free parking around the immediate vicinity, paid on street parking is available on most streets surrounding the Park. Public transport regularly passes Dundas Street, Rodney Street and the Canonmills area within easy walking distance to the Park. Although the Park serves the immediate community who generally walk to the Park, Rodney Street Tunnel is used as a gateway for many cyclists to the North Edinburgh Cycle Path Network.

Signage Although there is no signage directing visitors to the Park, threshold signs at the entrances provide a welcome for visitors. A 'Welcome to' threshold sign is located at all four entrances to the Park. The signs are of consistent design in all of Edinburgh's Parks. Two history panels and two notice boards also welcome visitors. (See Site Location Map on page 6 for locations). The notice boards are updated regularly, providing information on improvements within the Park, local events, surveys and litter picks, in addition to events and meetings the Friends organise. Contact details for the Parks and Greenspace Officer are also advertised. There is also a Welcome sign at the entrance to the toddlers play area, this has faded over the years and has now been replaced with a new colourful design.

Equal Access The network of paths is well used by pedestrians and cyclists who traverse across the Park. Paths can be used by cyclists and pedestrians following the implementation of the Land Reform (Scotland) Act, which promotes responsible use of accessible land. The Scottish Outdoor Access Code also encourages responsible use. Paths within the Park are surfaced in Bitmac and whin, both suitable for wheelchair users. Entry to the park from Summer Bank is by means of a set of wooden steps, unsuitable for wheelchairs. These steps are however DDA compliant but, the nature of this entrance makes it difficult to improve further.

The park is freely accessible at all times.

Healthy, Safe and Secure

Objective

The Park must be a healthy, safe and secure place for all members of the community to use. Relevant issues must be addressed in the management plan and implemented on the ground. New issues that arise must be addressed promptly and appropriately.

Safe Equipment and Facilities The Locality team work to co-ordinate activities and develop closer links between the Grounds Maintenance team, Parks Officer, Park Rangers and the Friends Group. This, along with working with the local community, park users, interest groups and volunteers will help to give a greater sense of ownership and assist us in maintaining the Park to the highest standards that can be achieved with the collective resource available. Day to day, park users and the Friends Group also highlight issues as soon as they arise. Informal inspections are carried out by Council employees who enter the play areas as part of their daily duties (Park Rangers, Playgrounds Maintenance Officer, Grounds maintenance and Waste and Cleansing staff). They report obvious hazards to the Council's workshop engineers. Contact details for the Parks Officer are located in the park noticeboards for visitors to report problems, in addition to contact details on threshold and play area signs.

Personal Security in the Park Council staff enter the Park on a regular basis, which helps to provide a sense of security. The Park is busy throughout the day with dog walkers and is an important through route for pedestrians and cyclists. The Park is not locked at night but lighting columns illuminate the main path through.

Dog fouling The Park is well used by local residents for walking their dogs. The Council's Environmental Wardens monitor evidence of

dog fouling and promote responsible dog ownership. If necessary, the Environmental Wardens can enforce the Dog Fouling (Scotland) Act 2003. Dogs are allowed off the lead in the Park, but signs located at the entrances to play areas restrict dogs from entering these areas. The City of Edinburgh Council does not have separate bins for dog waste, bins located throughout the park are for disposal of litter and dog fouling.

Appropriate Provision of Facilities The Park is an important amenity for the local community, providing an accessible green space for recreation and relaxation. The wide range of play equipment available for children of all ages means that both play areas are well used and are maintained to a high standard. New play equipment was installed in the teenage zone in 2013. Within the Park there are a mix of seating including black metal seats, blue benches within the play areas, a teenage seating shelter and a circular bench in the centre of the Park. There are presently 8 litter bins located throughout. These bins have all been replaced in recent years in order to rationalise a standard style from the Broxap “Derby” range.

The Council’s Play Area Action Plan 2011-2016 (available to view in the Strategic Parks Management Information, available on request) aims to guide the improvement of existing play areas, sets out a vision for future play area provision and prioritises future investment. The Plan was approved by the Council's Policy and Strategy Committee in June 2012.

Quality of Facilities The overall quality of facilities in the park is of good condition. Regular visits from parks staff identify any areas that need attention. The variety and quality of play equipment makes the Park an exciting and interesting place to be and invites visitors to return time and time again.

Well Maintained and Clean

Objective

For aesthetic as well as health and safety reasons, issues of cleanliness and maintenance must be adequately addressed.

Litter and Waste Management There is a good provision of bins which are emptied daily. The Park is also litter picked by the Locality cleansing teams when the bins are emptied, ensuring that the Park remains litter free. In periods of good weather, when the Park is heavily used, litter removal and emptying bins may require to be increased to twice a day.

Grounds Maintenance Generally the Park is maintained to a good standard but more can be done to raise the quality of the horticultural elements. Further improvements to grounds maintenance should be considered including moving towards performance based standards rather than frequency based. Regular visits of the Park will be included in the Development Plan for the Parks Officer and Park Rangers and other site inspections carried out from time to time, to monitor standards throughout the period of the Management Plan and check the progress of improvements. The City of Edinburgh Council also undertakes internal Parks Quality Assessments. These are carried out annually and highlight areas where the standards may have dropped.

Building and Infrastructure Maintenance Graffiti and damage resulting from anti-social behaviour are dealt with promptly. Edinburgh Council has a zero tolerance policy to offensive graffiti and aim to have it removed within 24 hours. The Park Ranger will remove graffiti where possible otherwise details are passed to the specialist graffiti treatment unit.

Equipment Maintenance In-house ROSPA trained staff inspects play equipment on a monthly basis. Any defects identified are either repaired immediately or isolated and made safe, for repair at a later date. Written records of inspections and works undertaken are held with the Workshops at Inverleith Park. Annual inspections and risk assessments, conforming to the Register of Play Inspectors International (RPII), are carried out on all the playgrounds by a qualified RPII Inspector and the inspection conforms to the requirements of BSEN 1176-11.

Sustainability

Objective

To ensure that the methods used in maintaining the Park and its facilities are environmentally sound and are based upon best practice. To increase biodiversity of the Park.

Environmental Sustainability Through the Edinburgh Local Biodiversity Action Plan (LBAP), the City of Edinburgh Council aim to conserve and enhance Edinburgh's natural heritage. The council continues to work on a number of initiatives towards more sustainable practices, such as peat reduction, waste recycling and increasing biodiversity. Vegetation clearance is scheduled to avoid nesting birds. A wildflower meadow has been created to increase biodiversity. No parking is available in the park therefore the majority of visitors to the Park are local residents who walk or cycle to the site. The main cycle route links into a city wide cycle/off road network to and from the city centre.

Pesticides The use of pesticides is kept to a minimum. A draft pesticide policy has been produced by the City of Edinburgh Council. It states, where appropriate, all non chemical alternative methods of weed control will be investigated and implemented depending on the requirements of the site, local environment and its users. This will also take into consideration, all available resources and any cost implications, which could impact on the local service delivery.

Peat use The only use of peat by the Parks and Greenspace Unit is in the production of bedding plants at the Council's Inch Nursery. Peat is rarely used within the Park. Root balls of new planting may contain peat.

Waste Minimisation The Council is keen to reduce, re-use and recycle wherever possible. Any green waste collected from the park is composted, recycled and re-used. Where possible tree chippings are spread directly back onto areas as a weed control measure and when the grass is cut the clipping are left on site. Recycling points are provided near the entrance to Rodney Street Tunnel but no recycling bins located within the park.

Woodland Management The Park contains a variety of tree stock and the Council has undertaken a tree hazard management assessment by the Forestry who manages the trees. (See Appendix 2) Careful consideration will need to be given on how the tree stock is managed within the park as trees mature and how others are replaced as a result of disease, decay or damage.

Conservation and Heritage

Objective

Particular attention should be paid to the conservation and appropriate management of natural, landscape and structural features.

Conservation Fauna and Flora The recent creation of a wildflower meadow significantly contributes to increasing local biodiversity and helps meet criteria for Bee Conservation within the LBAP. Bat boxes were installed into the Park several years ago, sadly some of these have been damaged and removal is required. Bird boxes have also been installed in the Park.

Conservation Landscape The layout of the park has not changed since around 1950. Every effort has been made to maintain and conserve the unique layout of this historical park.

Conservation Buildings There are no buildings owned by the City of Edinburgh Council within the Park, however an electrical substation is located near the entrance on Logan Street. This is maintained and managed by Scottish Power. Rodney Street and Scotland Street Tunnels are both listed structures and are managed and maintained by the City of Edinburgh Council, Transport, Bridges Team. Although not listed, the ornate pillars at the Logan Street entrance are of historic significance to the park and as such are afforded special attention.

Community Involvement

Objective

To actively pursue the involvement of the community, through consultation, events, activities and the Friends.

Community Involvement The increasing involvement of local community groups and individuals with an interest in the Park illustrates the importance of the site to local people and will be essential to the continuation of the Parks development. In addition to the numerous park users and visitors that use the Park, the main interest group are the Friends of King George V and Scotland Yard Parks. The Friends group work on numerous projects alongside the Council and are actively involved in all Park developments and consultations. They organise litter picks throughout the year, undertake weeding and planting sessions as well as assisting in the cleanup of graffiti.

Throughout the year the local Bellvue Chapel also organise green action days in the park, undertaking general maintenance tasks.

In 2011 a Youth Project funded by Action For Children saw fourteen local young people participate in the Inspiring Scotland Challenge. Over a period of seven weeks the youths completed numerous park improvements; leveling ground in preparation for the table tennis table, installing paving, painting the youth shelter, graffiti removal and weeding. (More information is available on the Friends website, <http://www.kgvsy.org.uk/>).

In 2019, the Parks Team worked with the Friends Group to install two raised beds for community use and in support of the Community Growing initiative.

The Council conducts a Parks and Greenspace Survey annually. It allows the wider general public an opportunity to air their opinions to the Council on what they think about their local park and greenspace. The survey is advertised in libraries, park noticeboards and the Council website.

Community Events The park is not suitable for major events due to its size and access restrictions, however, small, seasonal community events are funded and organised by the friends group.

Marketing and Promotion

Objective

To actively promote King George V and Scotland Yard Parks to all potential users

Marketing and Promotion The Park is promoted through the Council website. The Friends also advertise their details in the notice boards and on their website: <http://www.kgvsy.org.uk/>. Posters advertising the annual Summer Action Programme also promote the Park and its facilities to new users. Posters are displayed in local schools, libraries and through youth clubs throughout the school summer holidays.

Information Provision The two notice boards located within the park display current information on local events and park developments. The Friends have a website that is updated regularly. The City of Edinburgh Council has a dedicated webpage that highlights the parks facilities.

Education and Interpretative Provision Much work to develop two history panels within the park was undertaken by the Park Rangers, and were installed in 2013. The Park Ranger Service continues to work with local schools and youth groups to promote and educate on the importance of local environmental issues, particularly engaging on the issues of dog fouling and littering.

Management

Objective

To demonstrate that there is a balance between all the priorities, policies and partners and that there is a time scale for putting the objectives into practice.

Management Plan Implementation The Council acknowledges the effort and support of the groups that have an interest in the Park and works closely with them, in partnership, to maintain and manage the Park for the benefit of its users, residents and visitors. This Management Plan aims to provide a clear framework for making informed and planned decisions about the future plans for the Park. The local Park Management Team aim to monitor changes in legislation, industry trends and constantly strive to provide relevant service improvements to develop the Park to meet the needs of its local community. The formation of the Management Plan will also provide a framework for the Friends group and others to monitor our performance against agreed actions.

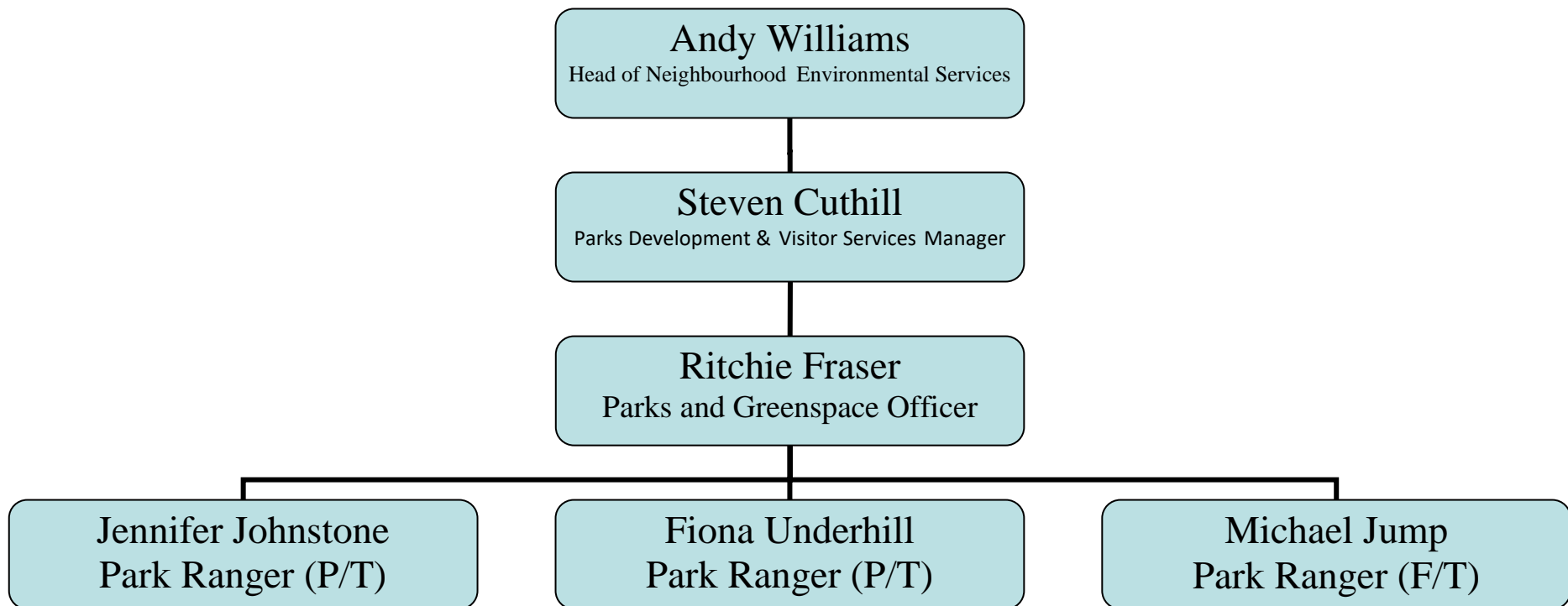
The adoption of the Green Flag Standard as a way of analysing the quality of parks and greenspace in Edinburgh and its self-assessment process (PQA) has been useful in identifying strengths and weaknesses for sites and the impact of our current management processes. The process results in a detailed plan of improvements that are in the interests of the community and the Park.

Management Structure

Place is structured to deliver services for the needs and priorities of local communities in each of four Locality Planning Areas. King George V and Scotland Yard Parks lies within the North West Locality Planning Area, also referred to as the North West Locality.

The Locality Manager has responsibility for the local delivery of essential services such as libraries, community safety, road repairs, parks, and housing. The Locality Transport & Environment Manager within the North West Locality team has day to day responsibility for the management and development of Environment Services, which includes community engagement and development of parks and greenspaces, through the Parks & Greenspace Officer, and Park Rangers.

The Central Parks and Greenspace Service support the Locality Parks Team in delivering a quality greenspace service, offering specialist advice and assistance as necessary.



How Will We Get There?

This section includes the development plan, setting out the aims and objectives for King George V Park over the term of the Management Plan. This section also describes the maintenance regimes and proposed management structure to deliver the Management Plan.

Development Plan

It is expected that this section is updated regularly and reviewed regularly. It may contain items that are out with the timescale of the Management Plan; this is to ensure that known future activities are recorded.

This section sets out the intended development actions and targets for the Park under each of the Green Flag Award, aims allocating a time frame, responsibility and measures. Actions will include existing projects planned for the site.

The Action Plan covers a 5 year period from 2019-2024. It will be reviewed on an annual basis to ensure future actions are added as required.

Definitions of initials:

FoKGV - Friends of King George V and Scotland Yard Parks
PGO - Community Parks Officer
PGS - Parks and Greenspace Service
EW - Environmental Wardens

LTEM – Locality Transport & Environment Manager
PR - Park Ranger
GMU – Grounds Maintenance Unit

Objective <i>The overall impressions for any member of the community approaching and entering the park should be positive and inviting, regardless of the purpose for which they are visiting.</i>						
Theme	Action	Where and/ or how	Year	Who	Cost	Status
A Welcoming Place	Improve way marking to and within park	Look at signage on main routes and finger posts within park to other destinations. Renew Road paint/ Cycle markings.	2020/21	PGO/PR	£1,000	Ongoing
	Replace Welcome to sign about toddlers play area.	Work with Member of Friends Group to design and install	2016	PGO/PR/ FoKGV	£250	Complete
	Maintain stepped entrance at Summer Bank to improve safety	Replace worn and rotten rails and sleeper steps, clear steps of detritus and redefine path edges.	2021/2025	PGO	£650/ £1,500	Complete/ Ongoing
	Improve entrance to Park from Logan Street	Resurface whin entrance with tarmac, improve path drainage. Herbaceous beds replanted and gapped up	2020	PGO	£6500	Complete
	Clear lines of site and remove hidden areas under wooded areas.	All underplanted shrubs cleared and levelled.	2020	PGO	£4000	Complete
	Clear setts around circular bench	Setts de-mossed, dug out and repointed.	2020	PGO	£12000	Complete
	Path and play area upgrades	Arrange for Section 75 fund from neighbouring Bank of Scotland site development get used to upgrade paths and play areas, implementation to run concurrently with development.	2026- 2028	PGO/ Developers		Ongoing

Objective <i>The park must be a healthy, safe and secure place for all members of the community to use.</i>						
Theme	Action	Where and/ or how	Year	Who	Cost	Status
Healthy, Safe and Secure	Tighten control of dog fouling	Work alongside Environmental Wardens to encourage responsible dog ownership. Speak to dog owners/hand out leaflets/ patrol park. Engage with local Schools and youth groups to design and implement signage.	2024/2029	PR/EW/Fo KGV	£500	Ongoing

Objective <i>For aesthetic as well as health and safety reasons, issues of cleanliness and maintenance must be adequately addressed.</i>						
Theme	Action	Where and/ or how	Year	Who	Cost	Status
Clean and Well Maintained	Ivy removal	Investigate removal of Ivy from Rodney Street Tunnel and banking wall in North West corner of park	2020/2022	PGO/PR/GMU/ Sustrans	TBC	Ongoing
	Improve maintenance standards	Improve maintenance standards within the resources available	2024/2029	LTEM/GMU/P GO	N/A	
	Internal Park Assessments	Continue to undertake annual internal assessments	Ongoing	PGO/PR	N/A	
	Monitor and rectify drainage issues on cycle path	Annual sweep and removal of leaves from cycle path adjacent to play park to prevent drain clogging and path flooding. In conjunction	2025	PGO/PR/ Sustrans		ongoing

		with annual leaf removal check and unblock soakaway adjacent to The Yard as necessary. Swale to be installed and path levels and gradient of camber to be adjusted				
--	--	--	--	--	--	--

Objective *To ensure that the methods used in maintaining the Park and its facilities are environmentally sound and are based upon best practice. To increase biodiversity of the Park.*

Theme	Action	Where and/ or how	Year	Who	Cost	Status
Sustainability	Encourage biodiversity	Establish annual wildflower meadow	2019/2024	PGO/PR	TBC	Ongoing
	Encourage biodiversity	Explore idea of planting perennial plants on banking	2024-2029	PGO/PR	TBC	Ongoing
	Encourage biodiversity	Plant bed at Logan Street entrance with herbaceous	2021	PGO/PR	£2000	Complete
	Encourage bats	Check condition of current bat boxes. Replace or increase number of existing boxes if necessary	2022 onwards	PGO/PR	TBC	Ongoing
	Encourage birds to nest	Check condition of current bird boxes. Replace or increase number of existing boxes if necessary	2022 onwards	PGO/PR	£200	Ongoing

Objective *Particular attention should be paid to the conservation and appropriate management of natural, landscape and structural features.*

Theme	Action	Where and/ or how	Year	Who	Cost	Status
Conservation and Heritage	Maintain history board	Regular patrols	Ongoing	PR	N/A	Ongoing

	Update notice board	Updating conservation and biodiversity information.	Ongoing	PR	N/A	Ongoing
--	---------------------	---	---------	----	-----	---------

Objective To actively pursue the involvement of the community, through consultation, events, activities and the Friends of King George V Park						
Theme	Action	Where and/ or how	Year	Who	Cost	Status
Community Involvement	Continue to work closely with FoKGV	Consult with FoKGV on all park developments.	Ongoing	PGO/PR/LTEM	N/A	Ongoing
	Support FoKGV and volunteers	Provide tools for general maintenance, litter pick kits and organised uplift of waste.	Ongoing	PGO/PR	N/A	Ongoing
	FoKGV Newsletter	Continue to publish and circulate a newsletter to provide updates on park development, events, etc.	Ongoing	FoKGV	N/A	Ongoing
	FoKGV develop park through external funding	Continue to apply for external funding for park projects.	Ongoing	FoKGV/PGO	Variable	Ongoing

Objective To actively promote King George V and Scotland Yard Parks to all potential users.						
Theme	Action	Where and/ or how	Year	Who	Cost	Status
Marketing and Promotion	Promote park events	Ensure notice board is up to date	Monthly	PR	N/A	Ongoing
	Promote Friends and	Ensure notice board is up to date	Monthly/As	PR	N/A	Ongoing

	community activities.		necessary			
	Promote Green Flag success	Ensure notice board is up to date	Annually	PR	N/A	Conditional on Green Flag retention

Objective To demonstrate that there is a balance between all the priorities, policies and partners and that there is a time scale for putting the objectives into practice.

Theme	Action	Where and/ or how	Year	Who	Cost	Status
Management	Deliver Management Plan objectives	Review and update plan annually	Annually	PGO/PR		Ongoing
	Obtain and retain Green Flag Award	Green Flag Application	Annually	PGO	£1000	Ongoing

Finance

Revenue funding

The provision of revenue funding for the Park consists of work undertaken at present by the Locality Parks Team only.

There is no specific maintenance budget allocation for King George V and Scotland Yard Parks so it is difficult to determine the exact costs associated with maintaining it. As there are no up to date rates for grounds maintenance an approximate annual cost cannot be calculated.

The Parks & Greenspace Officer has a budget for small scale repairs and maintenance improvements. The annual budget for parks and green space development, including repairs and reactive maintenance for North West Edinburgh is approximately £90,000 (2019/20). This revenue budget is allocated for ALL Parks and Greenspace within the Locality.

Capital Funding

The Capital budget is administrated by the Parks and Greenspace Service. The budget is generally allocated in advance and the role of developing Management Plans is to support better planning of the financial resources required, so that proposals can be developed and included in future bids.

Grants

The Parks and Greenspace Unit have a small grants fund that Community groups can apply to for small items or to assist in developing their group or the sites they have adopted. Some projects can attract other internal/external grants that are utilised wherever possible.

How will we know when we have arrived?

This section describes how the development, maintenance and management of King George V and Scotland Yard Parks will be monitored and reviewed.

Monitoring and Reviewing

The Locality Transport & Environment Manager, Parks & Greenspace Officer and Park Rangers, as well as Grounds Maintenance Staff and Team Leaders are all involved in managing and maintaining the Park supported and assisted by local interest groups.

Regular meetings with the Friends, Parks Officer, GMU and Park Rangers will enable any maintenance issues to be dealt with more efficiently and effectively. The Friends hold committee meetings, which the Locality Transport & Environment Manager or Parks Officer can attend to receive feedback from the attendees relating to management issues.

Members of the public are encouraged to comment on the standards of maintenance and this is passed to all those involved with the management of the park. One method of doing this that is useful is through the ongoing Parks and Greenspace Survey, which can provide both quantitative and qualitative information on the levels of satisfaction of the management of the Park. This will also reflect how successful we are in implementing the Management Plan.

The Green Flag Award Scheme itself will provide constructive feedback from independent judges. The value of this information will help shape further improvements, both to the Management Plan and to our management processes. In addition, it is expected that we will undertake another internal Green Flag Assessment, Parks Quality Assessments, in 2025. This will also provide evidence of the development and management of King George V and Scotland Yard Parks.

Measures of success

- Green Flag Award achieved in 2014 and the quality standards that are obtained in this process are constantly reviewed to check they remain at that level or above.
- The Council's internal Park Quality Assessments will continue to be used as a baseline to be improved upon annually.

- Biodiversity is considered in all park developments.
- History panels are well maintained.
- Continue to work with the Friends Group on all park developments. Ensure wider community are informed on park developments, events and activities through advisement.
- Events, activities and developments in the park are publicised well and the community are involved in ongoing communication with local residents.
- Successfully deliver the management plan year on year.

Appendices

Appendix 1 - Historical Maps



Robert Stevenson and Son, The City of Edinburgh: W. & A. K. Johnston, 1837



Lancefield, Alfred, 1843-1855 Johnston's plan of Edinburgh & Leith: W. & A. K. Johnston, 1851



John Bartholomew, 1831-1893, Hislop's new plan of Edinburgh & Leith with suburbs ... constructed for the Post Office Directory: Bartholomew, 1865



John Bartholomew, 1860-1920, Bartholomew's Plan of Edinburgh and Leith with Suburbs Constructed from Ordnance and Actual Surveys: Bartholomew, 1907

Appendix 2 – Tree Survey

Tree Seq	Species (Common Name)	Tree Loc	Tree Des	O/s Grid Ref	Height	Spread	Trunk
765	Salix spp. (Willow species)	b08099		325313,674850	5 to 10 meter	6 to 9 meters	50 - 60
766	Malus spp. (Apple spp)	b08100		325312,674853	5 to 10 meter	3 to 6 meters	20 - 30
769	Salix spp. (Willow species)	b08103		325306,674851	10 to 15 mete	6 to 9 meters	30 - 40
770	Malus spp. (Apple spp)	b08104		325302,674850	Up to 5 meter	3 to 6 meters	20 - 30
771	Prunus cerasifera 'Pissardii' (Purple-leaved Plum)	b08105		325306,674854	5 to 10 meter	3 to 6 meters	20 - 30
772	Malus spp. (Apple spp)	b08108		325309,674861	5 to 10 meter	3 to 6 meters	20 - 30
773	Acer platanoides (Norway Maple)	b08106		325297,674846	5 to 10 meter	6 to 9 meters	30 - 40
774	Betula pendula (Silver Birch)	b08107		325291,674845	5 to 10 meter	6 to 9 meters	20 - 30
775	Aesculus hippocastanum (Horse Chestnut)	b08109		325308,674865	5 to 10 meter	6 to 9 meters	10 - 20
776	Acer platanoides (Norway Maple)	b08110		325306,674869	5 to 10 meter	9 to 12 meter	30 - 40
777	Malus spp. (Apple spp)	b08111		325302,674877	Up to 5 meter	6 to 9 meters	20 - 30
778	Acer platanoides (Norway Maple)	b08112		325301,674881	10 to 15 mete	9 to 12 meter	40 - 50
779	Malus spp. (Apple spp)	b08113		325300,674885	Up to 5 meter	3 to 6 meters	20 - 30
780	Malus spp. (Apple spp)	b08114		325296,674885	5 to 10 meter	6 to 9 meters	30 - 40
781	Crataegus monogyna (Hawthorn)	b08115		325297,674890	5 to 10 meter	3 to 6 meters	20 - 30
782	Crataegus monogyna (Hawthorn)	b08116		325293,674888	Up to 5 meter	6 to 9 meters	20 - 30
783	Alnus incana (Grey Alder)	b08117		325279,674879	5 to 10 meter	Up to 3 meter	10 - 20
784	Betula spp. (Birch spp)	b08118		325280,674883	5 to 10 meter	3 to 6 meters	20 - 30
785	Aesculus hippocastanum (Horse Chestnut)	b08119		325277,674882	Up to 5 meter	3 to 6 meters	20 - 30
786	Alnus incana (Grey Alder)	b08120		325275,674877	5 to 10 meter	3 to 6 meters	20 - 30
787	Malus spp. (Apple spp)	b08121		325270,674879	5 to 10 meter	6 to 9 meters	30 - 40
788	Aesculus hippocastanum (Horse Chestnut)	b08122		325270,674875	5 to 10 meter	3 to 6 meters	20 - 30
789	Aesculus hippocastanum (Horse Chestnut)	b08123		325266,674876	5 to 10 meter	3 to 6 meters	10 - 20
790	Acer platanoides (Norway Maple)	b08124		325266,674873	5 to 10 meter	3 to 6 meters	20 - 30
791	Ulmus spp. (Elm spp)	b08125		325260,674874	10 to 15 mete	6 to 9 meters	30 - 40
792	Ulmus spp. (Elm spp)	b08126		325259,674873	10 to 15 mete	6 to 9 meters	40 - 50
793	Ulmus spp. (Elm spp)	b08127		325257,674869	10 to 15 mete	6 to 9 meters	40 - 50
794	Malus spp. (Apple spp)	b08129		325248,674867	Up to 5 meter	3 to 6 meters	10 - 20
795	Laburnum spp. (Laburnum spp)	b08128		325252,674870	5 to 10 meter	6 to 9 meters	40 - 50
796	Malus spp. (Apple spp)	b08130		325252,674865	Up to 5 meter	3 to 6 meters	20 - 30

Tree Seq	Species (Common Name)	Tree Loc	Tree Des	O/s Grid Ref	Height	Spread	Trunk
797	Acer platanoides (Norway Maple)	b08131		325250,674860	10 to 15 mete	6 to 9 meters	20 - 30
798	Acer platanoides (Norway Maple)	b08132		325256,674860	10 to 15 mete	6 to 9 meters	30 - 40
1106	Tilia spp. (Lime spp)	b08177		325313,674790	10 to 15 mete	3 to 6 meters	20 - 30
1107	Prunus spp. (Cherry spp)	b08178		325315,674788	5 to 10 meter	3 to 6 meters	20 - 30
1108	Betula spp. (Birch spp)	b08179		325316,674792	5 to 10 meter	3 to 6 meters	20 - 30
1109	Tilia spp. (Lime spp)	b08180		325318,674790	10 to 15 mete	3 to 6 meters	30 - 40
1110	Tilia spp. (Lime spp)	b08181		325320,674791	10 to 15 mete	3 to 6 meters	20 - 30
1111	Betula spp. (Birch spp)	b08182		325319,674794	5 to 10 meter	Up to 3 meter	10 - 20
1112	Acer platanoides (Norway Maple)	b08183		325323,674792	5 to 10 meter	6 to 9 meters	30 - 40
1114	Prunus spp. (Cherry spp)	b08185		325326,674798	5 to 10 meter	3 to 6 meters	20 - 30
1115	Prunus spp. (Cherry spp)	b08186		325328,674793	5 to 10 meter	3 to 6 meters	20 - 30
1116	Prunus spp. (Cherry spp)	b08187		325333,674794	5 to 10 meter	3 to 6 meters	30 - 40
1117	Prunus spp. (Cherry spp)	b08188		325330,674797	5 to 10 meter	Up to 3 meter	10 - 20
1118	Prunus spp. (Cherry spp)	b08189		325329,674799	5 to 10 meter	6 to 9 meters	20 - 30
1119	Prunus spp. (Cherry spp)	b08190		325329,674800	5 to 10 meter	Up to 3 meter	10 - 20
1120	Prunus spp. (Cherry spp)	b08191		325332,674800	5 to 10 meter	3 to 6 meters	10 - 20
1123	Salix spp. (Willow species)	b08193		325337,674804	5 to 10 meter	3 to 6 meters	20 - 30
1124	Salix spp. (Willow species)	b08192		325335,674804	5 to 10 meter	6 to 9 meters	10 - 20
1125	Fraxinus excelsior (Common Ash)	b08196		325343,674801	5 to 10 meter	3 to 6 meters	30 - 40
1126	Fraxinus excelsior (Common Ash)	b08197		325348,674802	5 to 10 meter	3 to 6 meters	10 - 20
1127	Acer pseudoplatanus (Sycamore)	b08198		325349,674803	5 to 10 meter	6 to 9 meters	30 - 40
1128	Acer pseudoplatanus (Sycamore)	b08199		325351,674801	5 to 10 meter	3 to 6 meters	30 - 40
1129	Sambucus nigra (Common Elder)	b08200		325352,674807	Up to 5 meter	3 to 6 meters	10 - 20
1130	Fraxinus excelsior (Common Ash)	b08201		325356,674801	5 to 10 meter	3 to 6 meters	10 - 20
1131	Fraxinus excelsior (Common Ash)	b08202		325357,674802	5 to 10 meter	6 to 9 meters	10 - 20
1132	Acer pseudoplatanus (Sycamore)	b08203		325358,674806	10 to 15 mete	6 to 9 meters	30 - 40
1133	Malus spp. (Apple spp)	b08204		325362,674803	Up to 5 meter	3 to 6 meters	20 - 30
1134	Betula pubescens (Downy Birch)	b08205		325369,674807	5 to 10 meter	6 to 9 meters	40 - 50
1135	Salix caprea (Goat Willow)	b08206		325370,674809	Up to 5 meter	6 to 9 meters	10 - 20
1136	Betula spp. (Birch spp)	b08207		325374,674814	5 to 10 meter	3 to 6 meters	10 - 20
1137	Betula spp. (Birch spp)	b08208		325374,674815	5 to 10 meter	3 to 6 meters	10 - 20
1138	Betula spp. (Birch spp)	b08209		325377,674815	5 to 10 meter	3 to 6 meters	10 - 20

Tree Seq	Species (Common Name)	Tree Loc	Tree Des	O/s Grid Ref	Height	Spread	Trunk
1139	Betula spp. (Birch spp)	b08210		325380,674812	5 to 10 meter	6 to 9 meters	20 - 30
1140	Tilia spp. (Lime spp)	b08211		325382,674810	5 to 10 meter	3 to 6 meters	20 - 30
1143	Salix caprea (Goat Willow)	b08214		325387,674811	5 to 10 meter	3 to 6 meters	20 - 30
1145	Prunus spp. (Cherry spp)	b08216		325388,674814	Up to 5 meter	3 to 6 meters	10 - 20
1146	Prunus spp. (Cherry spp)	b08217		325390,674811	5 to 10 meter	Up to 3 meter	10 - 20
1147	Prunus spp. (Cherry spp)	b08218		325391,674813	5 to 10 meter	6 to 9 meters	30 - 40
1148	Betula spp. (Birch spp)	b08219		325396,674803	5 to 10 meter	3 to 6 meters	20 - 30
1149	Acer pseudoplatanus (Sycamore)	b08220		325396,674791	10 to 15 mete	6 to 9 meters	30 - 40
1150	Acer platanoides (Norway Maple)	b08233		325410,674769	10 to 15 mete	3 to 6 meters	20 - 30
1151	Acer pseudoplatanus (Sycamore)	b08221		325403,674786	10 to 15 mete	6 to 9 meters	30 - 40
1152	Acer pseudoplatanus (Sycamore)	b08222		325406,674780	10 to 15 mete	3 to 6 meters	20 - 30
1153	Acer pseudoplatanus (Sycamore)	b08223		325406,674779	10 to 15 mete	3 to 6 meters	10 - 20
1154	Acer pseudoplatanus (Sycamore)	b08224		325407,674778	10 to 15 mete	3 to 6 meters	20 - 30
1156	Acer platanoides (Norway Maple)	b08226		325400,674780	5 to 10 meter	3 to 6 meters	20 - 30
1157	Acer platanoides (Norway Maple)	b08227		325401,674775	10 to 15 mete	3 to 6 meters	20 - 30
1158	Acer platanoides (Norway Maple)	b08228		325405,674771	10 to 15 mete	3 to 6 meters	10 - 20
1159	Acer platanoides (Norway Maple)	b08229		325404,674769	10 to 15 mete	3 to 6 meters	20 - 30
1160	Fraxinus excelsior (Common Ash)	b08230		325407,674766	10 to 15 mete	3 to 6 meters	20 - 30
1161	Acer pseudoplatanus (Sycamore)	b08231		325406,674765	10 to 15 mete	3 to 6 meters	20 - 30
1162	Acer pseudoplatanus (Sycamore)	b08232		325406,674764	10 to 15 mete	6 to 9 meters	30 - 40
1163	Acer platanoides (Norway Maple)	b08234		325413,674772	5 to 10 meter	3 to 6 meters	10 - 20
1164	Fraxinus excelsior (Common Ash)	b08235		325411,674767	10 to 15 mete	3 to 6 meters	20 - 30
1165	Acer pseudoplatanus (Sycamore)	b08236		325413,674763	10 to 15 mete	3 to 6 meters	20 - 30
1166	Acer pseudoplatanus (Sycamore)	b08237		325414,674764	5 to 10 meter	3 to 6 meters	10 - 20
1167	Acer pseudoplatanus (Sycamore)	b08238		325416,674767	5 to 10 meter	3 to 6 meters	10 - 20
1168	Acer pseudoplatanus (Sycamore)	b08239		325415,674768	5 to 10 meter	3 to 6 meters	10 - 20
1169	Acer pseudoplatanus (Sycamore)	b08240		325415,674769	5 to 10 meter	Up to 3 meter	10 - 20
1192	Aesculus hippocastanum (Horse Chestnut)	b08263		325435,674784	10 to 15 mete	6 to 9 meters	30 - 40
1193	Prunus spp. (Cherry spp)	b08266		325432,674786	5 to 10 meter	3 to 6 meters	10 - 20
1194	Prunus spp. (Cherry spp)	b08264		325431,674784	5 to 10 meter	3 to 6 meters	10 - 20
1195	Aesculus hippocastanum (Horse Chestnut)	b08265		325434,674786	5 to 10 meter	3 to 6 meters	20 - 30
1196	Prunus spp. (Cherry spp)	b08267		325434,674789	5 to 10 meter	3 to 6 meters	20 - 30

Tree Seq	Species (Common Name)	Tree Loc	Tree Des	O/s Grid Ref	Height	Spread	Trunk
1197	Acer pseudoplatanus (Sycamore)	b08268		325437,674793	10 to 15 mete	3 to 6 meters	20 - 30
1198	Acer pseudoplatanus (Sycamore)	b08269		325440,674792	5 to 10 meter	3 to 6 meters	30 - 40
1199	Acer pseudoplatanus (Sycamore)	b08270		325440,674795	10 to 15 mete	6 to 9 meters	30 - 40
1200	Acer pseudoplatanus (Sycamore)	b08271		325443,674795	5 to 10 meter	3 to 6 meters	30 - 40
1201	Acer pseudoplatanus (Sycamore)	b08273		325442,674798	5 to 10 meter	3 to 6 meters	20 - 30
1202	Acer pseudoplatanus (Sycamore)	b08272		325441,674797	10 to 15 mete	3 to 6 meters	20 - 30
1203	Acer platanoides (Norway Maple)	b08274		325425,674786	10 to 15 mete	6 to 9 meters	30 - 40
1204	Salix alba (White Willow)	b08275		325426,674788	10 to 15 mete	9 to 12 meter	40 - 50
1206	Salix spp. (Willow species)	b08277		325427,674791	10 to 15 mete	9 to 12 meter	30 - 40
1207	Fraxinus excelsior (Common Ash)	b08278		325431,674794	5 to 10 meter	6 to 9 meters	30 - 40
1208	Fraxinus excelsior (Common Ash)	b08279		325422,674806	5 to 10 meter	9 to 12 meter	50 - 60
1209	Prunus spp. (Cherry spp)	b08280		325410,674789	10 to 15 mete	6 to 9 meters	30 - 40
1210	Tilia spp. (Lime spp)	b08281		325412,674790	10 to 15 mete	6 to 9 meters	20 - 30
1211	Prunus spp. (Cherry spp)	b08282		325411,674794	10 to 15 mete	6 to 9 meters	20 - 30
1212	Ulmus spp. (Elm spp)	b08283		325410,674795	5 to 10 meter	3 to 6 meters	20 - 30
1213	Fraxinus excelsior (Common Ash)	b08284		325409,674797	10 to 15 mete	6 to 9 meters	30 - 40
1214	Acer pseudoplatanus (Sycamore)	b08285		325408,674797	10 to 15 mete	3 to 6 meters	10 - 20
1215	Acer pseudoplatanus (Sycamore)	b08286		325406,674799	5 to 10 meter	3 to 6 meters	20 - 30
1217	Salix caprea (Goat Willow)	b08290		325403,674809	5 to 10 meter	6 to 9 meters	20 - 30
1218	Acer platanoides (Norway Maple)	b08291		325416,674813	5 to 10 meter	3 to 6 meters	20 - 30
1219	Prunus spp. (Cherry spp)	b08292		325425,674821	Up to 5 meter	3 to 6 meters	20 - 30
1220	Prunus spp. (Cherry spp)	b08293		325418,674823	Up to 5 meter	3 to 6 meters	20 - 30
1221	Salix spp. (Willow species)	b08294		325401,674815	5 to 10 meter	6 to 9 meters	20 - 30
1222	Acer platanoides (Norway Maple)	b08295		325400,674816	5 to 10 meter	6 to 9 meters	20 - 30
1223	Acer platanoides (Norway Maple)	b08296		325399,674822	5 to 10 meter	3 to 6 meters	20 - 30
1224	Acer platanoides (Norway Maple)	b08297		325398,674825	5 to 10 meter	6 to 9 meters	20 - 30
1225	Acer platanoides (Norway Maple)	b08300		325408,674832	5 to 10 meter	3 to 6 meters	10 - 20
1226	Prunus spp. (Cherry spp)	b08299		325406,674826	Up to 5 meter	3 to 6 meters	10 - 20
1227	Prunus spp. (Cherry spp)	b08298		325404,674828	Up to 5 meter	3 to 6 meters	10 - 20
1228	Acer platanoides (Norway Maple)	b08301		325411,674830	5 to 10 meter	3 to 6 meters	10 - 20
1229	Tilia spp. (Lime spp)	b08302		325418,674832	Up to 5 meter	3 to 6 meters	10 - 20
1230	Betula spp. (Birch spp)	b08303		325421,674838	5 to 10 meter	3 to 6 meters	10 - 20

Tree Seq	Species (Common Name)	Tree Loc	Tree Des	O/s Grid Ref	Height	Spread	Trunk
1231	Betula spp. (Birch spp)	b08304		325424,674842	5 to 10 meter	3 to 6 meters	10 - 20
1232	Betula spp. (Birch spp)	b08305		325429,674843	5 to 10 meter	3 to 6 meters	10 - 20
1233	Betula spp. (Birch spp)	b08306		325432,674845	5 to 10 meter	3 to 6 meters	20 - 30
1234	Betula spp. (Birch spp)	b08307		325432,674848	5 to 10 meter	Up to 3 meter	10 - 20
1235	Betula spp. (Birch spp)	b08309		325436,674851	5 to 10 meter	3 to 6 meters	20 - 30
1236	Alnus cordata (Italian Alder)	b08308		325434,674851	10 to 15 mete	6 to 9 meters	30 - 40
1237	Alnus cordata (Italian Alder)	b08310		325439,674852	15 to 20 mete	6 to 9 meters	30 - 40
1238	Alnus cordata (Italian Alder)	b08311		325440,674848	15 to 20 mete	6 to 9 meters	30 - 40
1239	Acer pseudoplatanus (Sycamore)	b08312		325458,674872	10 to 15 mete	3 to 6 meters	30 - 40
1241	Ligustrum vulgare (Common Privet)	b08314		325463,674867	Up to 5 meter	3 to 6 meters	10 - 20
1242	Acer pseudoplatanus (Sycamore)	b08315		325464,674868	10 to 15 mete	6 to 9 meters	40 - 50
1243	Acer pseudoplatanus (Sycamore)	b08316		325462,674869	5 to 10 meter	6 to 9 meters	20 - 30
1244	Acer pseudoplatanus (Sycamore)	b08317		325462,674877	5 to 10 meter	3 to 6 meters	10 - 20
1245	Acer pseudoplatanus (Sycamore)	b08318		325461,674879	5 to 10 meter	3 to 6 meters	10 - 20
1246	Acer pseudoplatanus (Sycamore)	b08319		325461,674879	5 to 10 meter	3 to 6 meters	10 - 20
1247	Acer pseudoplatanus (Sycamore)	b08320		325459,674879	5 to 10 meter	Up to 3 meter	10 - 20
1248	Acer pseudoplatanus (Sycamore)	b08321		325459,674881	5 to 10 meter	3 to 6 meters	30 - 40
1249	Acer pseudoplatanus (Sycamore)	b08322		325459,674886	5 to 10 meter	3 to 6 meters	30 - 40
1250	Acer pseudoplatanus (Sycamore)	b08323		325460,674901	Up to 5 meter	Up to 3 meter	10 - 20
1251	Acer pseudoplatanus (Sycamore)	b08324		325461,674898	5 to 10 meter	3 to 6 meters	20 - 30
1252	Acer pseudoplatanus (Sycamore)	b08325		325464,674896	5 to 10 meter	Up to 3 meter	10 - 20
1253	Acer pseudoplatanus (Sycamore)	b08326		325465,674894	5 to 10 meter	3 to 6 meters	20 - 30
1254	Acer pseudoplatanus (Sycamore)	b08327		325466,674889	5 to 10 meter	3 to 6 meters	20 - 30
1255	Acer pseudoplatanus (Sycamore)	b08328		325467,674890	5 to 10 meter	3 to 6 meters	10 - 20
1256	Acer pseudoplatanus (Sycamore)	b08329		325469,674890	5 to 10 meter	Up to 3 meter	10 - 20
1257	Acer pseudoplatanus (Sycamore)	b08330		325470,674888	5 to 10 meter	3 to 6 meters	20 - 30
1258	Acer pseudoplatanus (Sycamore)	b08331		325471,674886	5 to 10 meter	3 to 6 meters	20 - 30
1259	Acer pseudoplatanus (Sycamore)	b08332		325470,674886	5 to 10 meter	Up to 3 meter	20 - 30
1260	Acer pseudoplatanus (Sycamore)	b08333		325470,674885	5 to 10 meter	3 to 6 meters	20 - 30
1261	Acer platanoides (Norway Maple)	b08334		325471,674880	Up to 5 meter	3 to 6 meters	10 - 20
1262	Acer platanoides (Norway Maple)	b08336		325477,674867	5 to 10 meter	3 to 6 meters	10 - 20
1263	Acer pseudoplatanus (Sycamore)	b08335		325467,674875	10 to 15 mete	6 to 9 meters	40 - 50

Tree Seq	Species (Common Name)	Tree Loc	Tree Des	O/s Grid Ref	Height	Spread	Trunk
1264	Acer pseudoplatanus (Sycamore)	b08337		325475,674870	5 to 10 meter	3 to 6 meters	20 - 30
1265	Acer pseudoplatanus (Sycamore)	b08338		325476,674868	5 to 10 meter	3 to 6 meters	30 - 40
1266	Acer platanoides (Norway Maple)	b08370		325371,674871	10 to 15 mete	6 to 9 meters	30 - 40
1267	Acer platanoides (Norway Maple)	b08369		325375,674864	5 to 10 meter	3 to 6 meters	20 - 30
1268	Acer pseudoplatanus (Sycamore)	b08339		325477,674866	5 to 10 meter	3 to 6 meters	20 - 30
1269	Acer pseudoplatanus (Sycamore)	b08340		325473,674864	10 to 15 mete	3 to 6 meters	30 - 40
1270	Acer pseudoplatanus (Sycamore)	b08341		325469,674864	5 to 10 meter	Up to 3 meter	10 - 20
1271	Acer pseudoplatanus (Sycamore)	b08342		325469,674863	5 to 10 meter	Up to 3 meter	20 - 30
1272	Acer pseudoplatanus (Sycamore)	b08343		325469,674863	5 to 10 meter	3 to 6 meters	20 - 30
1273	Acer pseudoplatanus (Sycamore)	b08344		325468,674860	5 to 10 meter	3 to 6 meters	20 - 30
1274	Acer pseudoplatanus (Sycamore)	b08345		325470,674859	5 to 10 meter	3 to 6 meters	20 - 30
1275	Acer pseudoplatanus (Sycamore)	b08346		325477,674863	10 to 15 mete	3 to 6 meters	10 - 20
1276	Acer pseudoplatanus (Sycamore)	b08347		325478,674856	5 to 10 meter	3 to 6 meters	20 - 30
1277	Acer platanoides (Norway Maple)	b08348		325477,674854	10 to 15 mete	3 to 6 meters	20 - 30
1278	Acer pseudoplatanus (Sycamore)	b08349		325480,674854	5 to 10 meter	3 to 6 meters	10 - 20
1279	Acer pseudoplatanus (Sycamore)	b08350		325480,674852	10 to 15 mete	3 to 6 meters	10 - 20
1281	Ulmus spp. (Elm spp)	b08352		325481,674849	15 to 20 mete	6 to 9 meters	30 - 40
1282	Ulmus spp. (Elm spp)	b08353		325482,674847	5 to 10 meter	Up to 3 meter	10 - 20
1283	Acer pseudoplatanus (Sycamore)	b08354		325482,674841	10 to 15 mete	6 to 9 meters	30 - 40
1284	Platanus x hispanica (London Plane)	b08355		325483,674834	20 to 25 mete	Over 12 mete	90 +
1285	Fraxinus excelsior (Common Ash)	b08356		325483,674831	10 to 15 mete	6 to 9 meters	30 - 40
1286	Acer pseudoplatanus (Sycamore)	b08357		325478,674834	5 to 10 meter	3 to 6 meters	20 - 30
1287	Acer pseudoplatanus (Sycamore)	b08358		325476,674838	5 to 10 meter	3 to 6 meters	20 - 30
1288	Fraxinus excelsior (Common Ash)	b08359		325475,674845	10 to 15 mete	6 to 9 meters	30 - 40
1289	Acer pseudoplatanus (Sycamore)	b08360		325474,674848	10 to 15 mete	6 to 9 meters	30 - 40
1290	Fraxinus excelsior (Common Ash)	b08361		325473,674828	5 to 10 meter	6 to 9 meters	10 - 20
1291	Acer platanoides (Norway Maple)	b08362		325472,674837	5 to 10 meter	Up to 3 meter	10 - 20
1292	Acer platanoides (Norway Maple)	b08363		325471,674838	5 to 10 meter	3 to 6 meters	20 - 30
1293	Acer platanoides (Norway Maple)	b08364		325470,674839	Up to 5 meter	Up to 3 meter	10 - 20
1294	Acer pseudoplatanus (Sycamore)	b08365		325469,674845	10 to 15 mete	3 to 6 meters	30 - 40
1295	Ligustrum vulgare (Common Privet)	b08366		325468,674848	Up to 5 meter	3 to 6 meters	10 - 20
1296	Betula spp. (Birch spp)	b08367		325470,674851	5 to 10 meter	Up to 3 meter	10 - 20

Tree Seq	Species (Common Name)	Tree Loc	Tree Des	O/s Grid Ref	Height	Spread	Trunk
1297	Acer platanoides (Norway Maple)	b08368		325468,674852	5 to 10 meter	3 to 6 meters	20 - 30
1298	Prunus spp. (Cherry spp)	b08372		325370,674863	Up to 5 meter	3 to 6 meters	10 - 20
1300	Salix caprea (Goat Willow)	b08373		325368,674864	5 to 10 meter	3 to 6 meters	20 - 30
1301	Betula spp. (Birch spp)	b08374		325369,674864	10 to 15 mete	Up to 3 meter	10 - 20
1302	Alnus incana (Grey Alder)	b08375		325359,674867	10 to 15 mete	6 to 9 meters	30 - 40
1303	Salix caprea (Goat Willow)	b08376		325359,674865	Up to 5 meter	Up to 3 meter	10 - 20
1304	Alnus spp. (Alder spp)	b08378		325356,674866	10 to 15 mete	6 to 9 meters	30 - 40
1305	Betula spp. (Birch spp)	b08377		325360,674864	5 to 10 meter	Up to 3 meter	10 - 20
1306	Betula spp. (Birch spp)	b08379		325357,674864	10 to 15 mete	6 to 9 meters	30 - 40
1307	Salix caprea (Goat Willow)	b08380		325353,674864	5 to 10 meter	6 to 9 meters	20 - 30
1308	Acer platanoides (Norway Maple)	b08381		325348,674861	5 to 10 meter	3 to 6 meters	20 - 30
1309	Prunus spp. (Cherry spp)	b08382		325347,674861	10 to 15 mete	3 to 6 meters	10 - 20
1310	Acer platanoides (Norway Maple)	b08383		325345,674860	5 to 10 meter	6 to 9 meters	30 - 40
1311	Acer platanoides (Norway Maple)	b08384		325345,674855	5 to 10 meter	6 to 9 meters	30 - 40
1312	Acer platanoides (Norway Maple)	b08386		325330,674851	5 to 10 meter	6 to 9 meters	20 - 30
1313	Acer platanoides (Norway Maple)	b08385		325337,674853	5 to 10 meter	6 to 9 meters	20 - 30
1314	Fraxinus excelsior (Common Ash)	b08387		325373,674827	5 to 10 meter	3 to 6 meters	10 - 20
1315	Prunus spp. (Cherry spp)	b08388		325372,674826	5 to 10 meter	3 to 6 meters	10 - 20
1316	Tilia spp. (Lime spp)	b08389		325373,674824	5 to 10 meter	3 to 6 meters	20 - 30
1317	Prunus spp. (Cherry spp)	b08390		325369,674825	Up to 5 meter	3 to 6 meters	20 - 30
1318	Tilia spp. (Lime spp)	b08391		325369,674823	5 to 10 meter	3 to 6 meters	20 - 30
1319	Acer platanoides (Norway Maple)	b08392		325366,674829	5 to 10 meter	3 to 6 meters	20 - 30
1320	Fraxinus excelsior (Common Ash)	b08393		325365,674824	5 to 10 meter	3 to 6 meters	10 - 20
1321	Fraxinus excelsior (Common Ash)	b08394		325362,674821	5 to 10 meter	3 to 6 meters	20 - 30
1322	Fraxinus excelsior (Common Ash)	b08395		325329,674832	5 to 10 meter	3 to 6 meters	20 - 30
1323	Prunus spp. (Cherry spp)	b08396		325327,674830	5 to 10 meter	3 to 6 meters	10 - 20
1324	Fraxinus excelsior (Common Ash)	b08397		325327,674828	10 to 15 mete	3 to 6 meters	20 - 30
1325	Prunus spp. (Cherry spp)	b08398		325329,674827	10 to 15 mete	3 to 6 meters	20 - 30
1326	Tilia spp. (Lime spp)	b08399		325326,674826	5 to 10 meter	3 to 6 meters	20 - 30
1327	Prunus spp. (Cherry spp)	b08400		325331,674826	10 to 15 mete	3 to 6 meters	20 - 30
1328	Prunus spp. (Cherry spp)	b08401		325328,674825	5 to 10 meter	Up to 3 meter	10 - 20
1329	Tilia spp. (Lime spp)	b08402		325326,674824	5 to 10 meter	3 to 6 meters	20 - 30


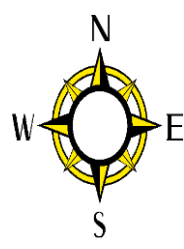
Tree Seq	Species (Common Name)	Tree Loc	Tree Des	O/s Grid Ref	Height	Spread	Trunk
1330	Tilia spp. (Lime spp)	b08403		325326,674822	5 to 10 meter	3 to 6 meters	20 - 30
1331	Prunus spp. (Cherry spp)	b08404		325328,674822	5 to 10 meter	3 to 6 meters	10 - 20
1332	Fraxinus spp. (Ash spp)	b08405		325327,674820	10 to 15 mete	3 to 6 meters	20 - 30
1333	Prunus spp. (Cherry spp)	b08406		325330,674820	5 to 10 meter	3 to 6 meters	30 - 40
1334	Fraxinus excelsior (Common Ash)	b08407		325329,674817	5 to 10 meter	3 to 6 meters	20 - 30
1335	Fraxinus excelsior (Common Ash)	b08408		325313,674821	10 to 15 mete	6 to 9 meters	30 - 40
1336	Fraxinus excelsior (Common Ash)	b08409		325313,674828	10 to 15 mete	6 to 9 meters	20 - 30
1337	Fraxinus excelsior (Common Ash)	b08410		325312,674830	10 to 15 mete	6 to 9 meters	20 - 30
1338	Prunus spp. (Cherry spp)	b08411		325309,674828	5 to 10 meter	3 to 6 meters	20 - 30
1339	Fraxinus excelsior (Common Ash)	b08412		325310,674834	10 to 15 mete	6 to 9 meters	20 - 30
1340	Prunus spp. (Cherry spp)	b08413		325307,674831	5 to 10 meter	3 to 6 meters	20 - 30
1341	Fagus sylvatica (Common Beech)	b08414		325308,674837	5 to 10 meter	3 to 6 meters	10 - 20
1342	Fraxinus excelsior (Common Ash)	b08415		325304,674835	5 to 10 meter	3 to 6 meters	20 - 30
1343	Fagus sylvatica (Common Beech)	b08416		325303,674836	5 to 10 meter	3 to 6 meters	10 - 20
1344	Fagus sylvatica (Common Beech)	b08417		325305,674836	5 to 10 meter	Up to 3 meter	10 - 20
1345	Prunus spp. (Cherry spp)	b08288		325404,674804	5 to 10 meter	3 to 6 meters	20 - 30
1346	Acer platanooides (Norway Maple)	b08287		325406,674805	10 to 15 mete	6 to 9 meters	30 - 40
1347	Ulmus glabra (Wych Elm)	01 - 550 -		325438,674910	5 to 10 meter	3 to 6 meters	20 - 30
1348	Ulmus glabra (Wych Elm)	02 - 550 -		325439,674909	5 to 10 meter	3 to 6 meters	10 - 20
1349	Acer pseudoplatanus (Sycamore)	Scotland S		325501,674830	5 to 10 meter	6 to 9 meters	20 - 30
1350	Ulmus glabra (Wych Elm)	Scotland S		325505,674825	10 to 15 mete	3 to 6 meters	20 - 30
1358	Prunus spp. (Cherry spp)	King Georg		325366,674827	5 to 10 meter	Up to 3 meter	10 - 20
1359	Quercus ilex (Holm Oak)	King Georg		325369,674832	Up to 5 meter	Up to 3 meter	10 - 20
1361	Acer platanooides (Norway Maple)	King Georg		325405,674831	Up to 5 meter	Up to 3 meter	10 - 20
1362	Crataegus monogyna (Hawthorn)	King Georg		325409,674800	Up to 5 meter	Up to 3 meter	10 - 20
1363	Betula spp. (Birch spp)	King Georg		325436,674846	5 to 10 meter	3 to 6 meters	10 - 20
1364	Betula spp. (Birch spp)	King Georg		325440,674847	Up to 5 meter	Up to 3 meter	10 - 20
1354	Sambucus nigra (Common Elder)	King Georg		325281,674880	Up to 5 meter	3 to 6 meters	10 - 20
1355	Ulmus glabra (Wych Elm)	King Georg		325283,674885	5 to 10 meter	3 to 6 meters	20 - 30
1356	Prunus spp. (Cherry spp)	King Georg		325333,674801	5 to 10 meter	3 to 6 meters	10 - 20
1357	Fagus sylvatica (Common Beech)	King Georg		325302,674834	5 to 10 meter	Up to 3 meter	10 - 20
1365	Aesculus hippocastanum (Horse Chestnut)	no tag		325433,674783	5 to 10 meter	3 to 6 meters	20 - 30

Tree Seq	Species (Common Name)	Tree Loc	Tree Des	O/s Grid Ref	Height	Spread	Trunk
1366	Acer pseudoplatanus (Sycamore)	no tag		325435,674781	5 to 10 meter	3 to 6 meters	20 - 30
1369	Acer pseudoplatanus (Sycamore)	King Georg		325478,674861	5 to 10 meter	Up to 3 meter	10 - 20
1370	Acer pseudoplatanus (Sycamore)	King Georg		325478,674859	5 to 10 meter	Up to 3 meter	10 - 20
1368	Fraxinus excelsior (Common Ash)	King Georg		325438,674904	5 to 10 meter	3 to 6 meters	10 - 20
1371	Unknown broadleaf (Unknown - Broadleaf)	King Georg		325317,674852	Up to 5 meter	Up to 3 meter	60 - 70
1372	Unknown broadleaf (Unknown - Broadleaf)	King Georg		325317,674850		Up to 3 meter	20 - 30
1374	Ulmus spp. (Elm spp)	King Georg		325365,674869	5 to 10 meter	3 to 6 meters	20 - 30
1	'Unlisted (Species not in list)	no tag		325456,674899	Up to 5 meter	3 to 6 meters	

Notes:-

Overall total: 262 trees -



	King George V Eyre Place	Scale	Unknown	
	Default analysis settings - King George V Eyre Place	Date	03/03/2020	
	This map is reproduced from Ordnance Survey material with permission of Ordnance Survey on behalf of the Controller of Her Majesty's Stationery Office (c) Crown Copyright. Unauthorised reproduction infringes Crown Copyright and may lead to prosecution or civil proceedings. Licence Number 100023420. City of Edinburgh Council 2007.			