

Business and Community Forum

16th August 2022

**CCWEL: Section 1 Roseburn
to Haymarket**



Agenda

- Introduction – Rurigdh McMeddes (The City of Edinburgh Council)
- Construction and traffic management – Scott Ritchie (Balfour Beatty)
- Social impact & sustainability initiatives – Duncan Gardner (Balfour Beatty)
- Questions
- Communications and engagement – Eileen Hewitt (The City of Edinburgh Council)
- Questions and AOB

Introduction

Rurighd McMeddes

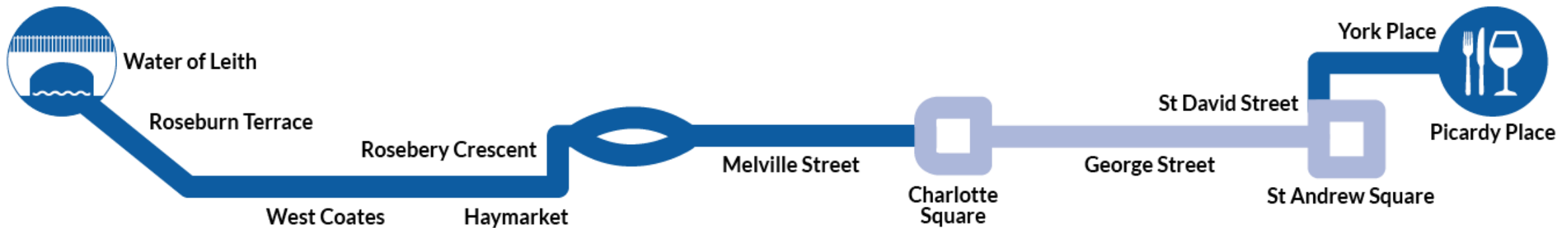
Project Officer, Active Travel

The City of Edinburgh Council

Section 1 Timeline



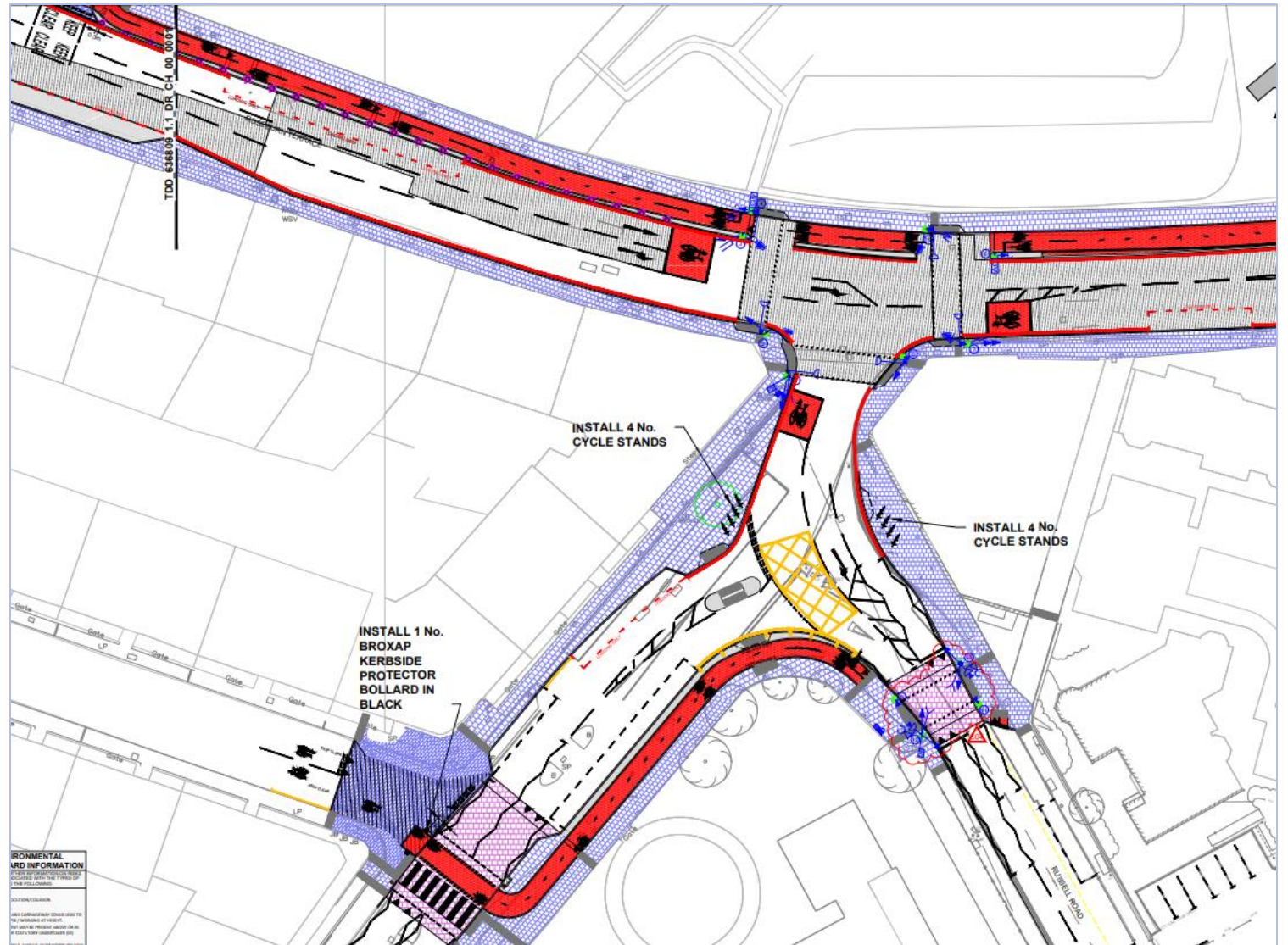
- Winter 2015/16 – Initial consultation and stakeholder engagement
- December 2016 – Approved preliminary designs
- April/May 2018 – Statutory consultation (TRO / RSO)
- April/May 2019 – Rejuvenating Roseburn consultation
- November 2019 – Public Hearing (TRO / RSO)
- July 2020 – Approval of Statutory Orders (TRO / RSO)
- October 2021 – Appointment of Balfour Beatty as Principal Contractor
- February 2022 – Work commences



CCWEL Section 1 Plans (Roseburn Area)

Proposals

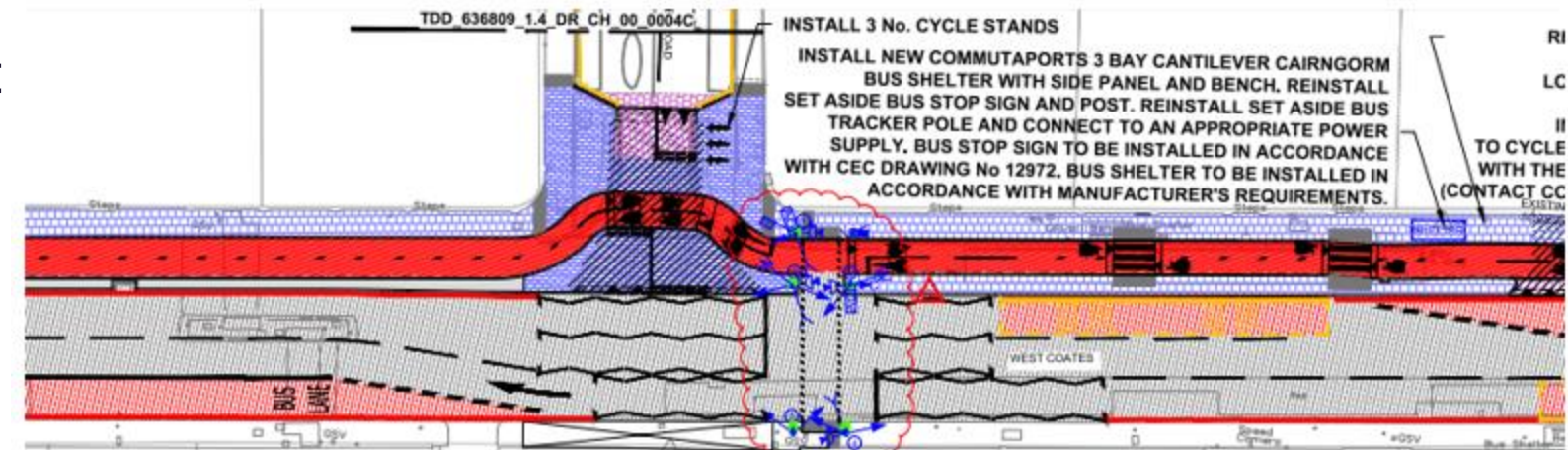
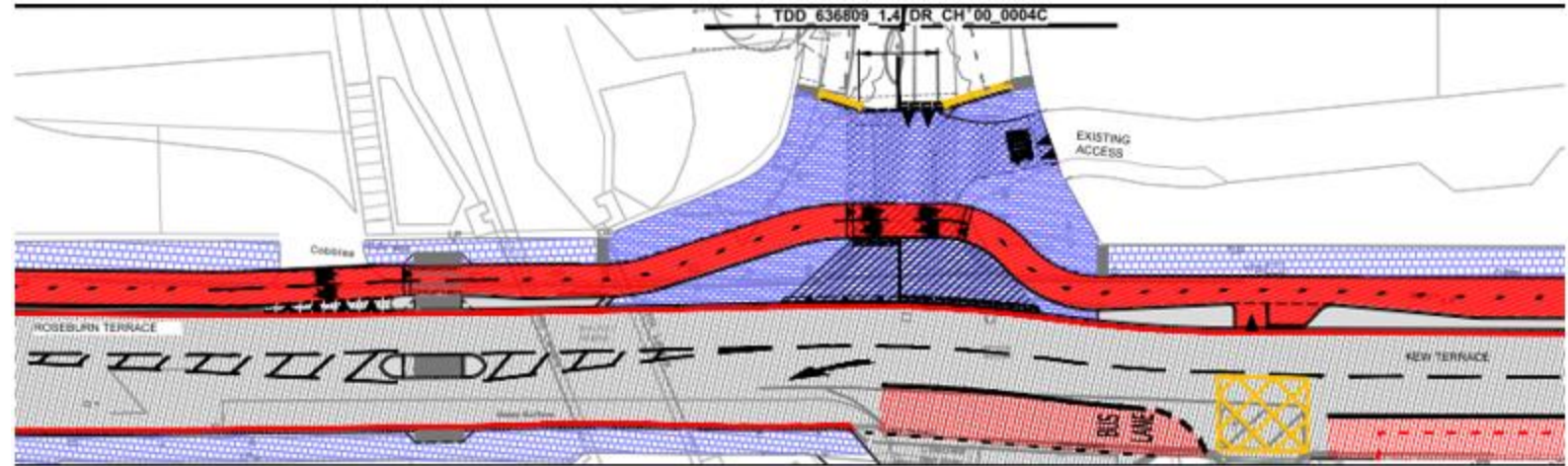
- Wider upgraded footways
- Crossings at junction with Roseburn St
- All day parking and loading on Roseburn Ter (south side)
- Short stay parking introduced
- New crossings on Roseburn St and Russell Rd
- Carriageway resurfacing
- Protected cycleway on north side of Roseburn Terrace



CCWEL Section 1 Plans (West Coates)

Proposals

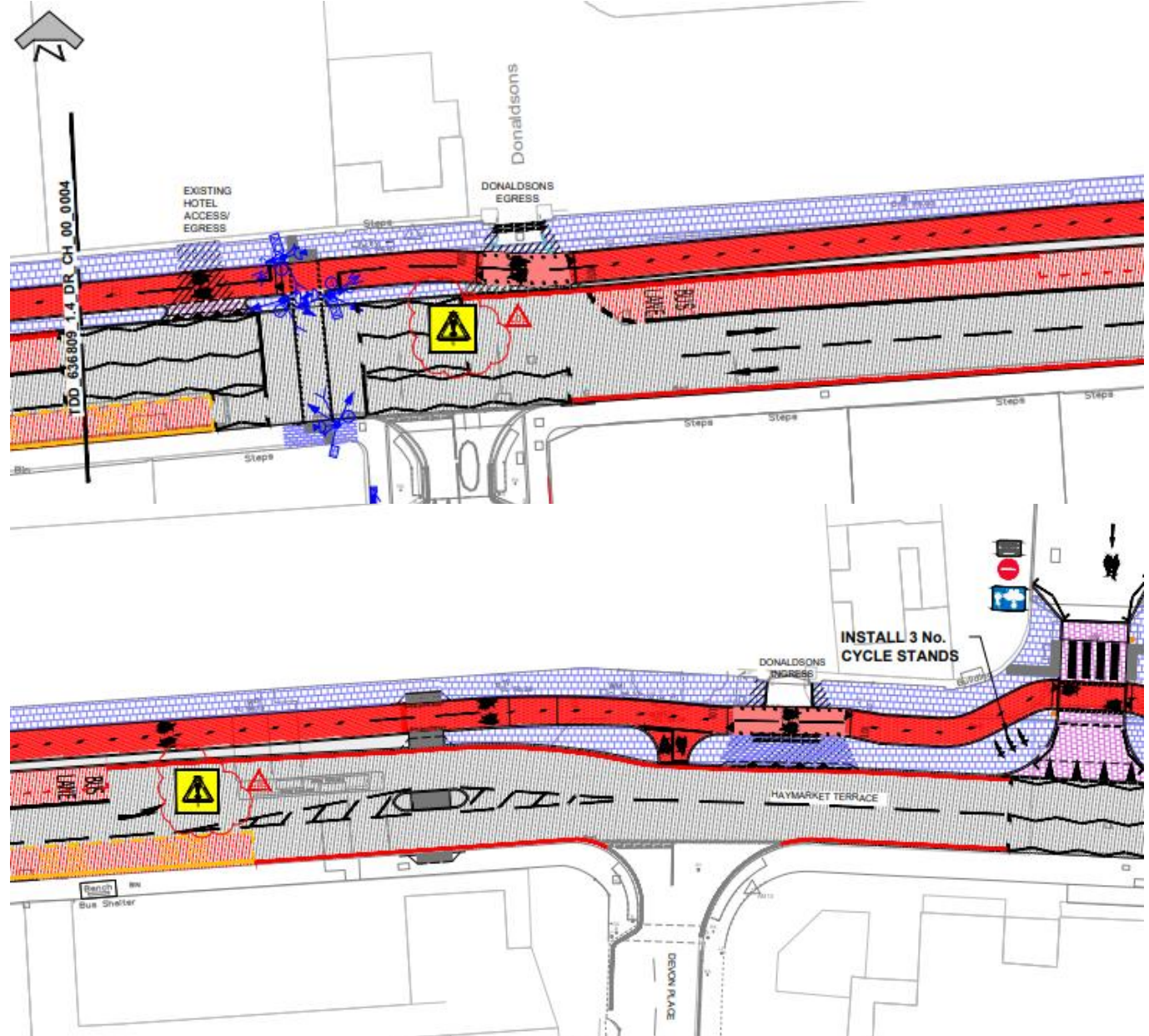
- Wider upgraded footways
- New and upgraded crossings over main road
- Improved crossings of Wester Coates Ter and Wester Coates Rd
- Bus lanes retained where most beneficial
- Carriageway resurfacing
- Protected cycleway on north side of West Coates



CCWEL Section 1 Plans (West Coates)

Proposals

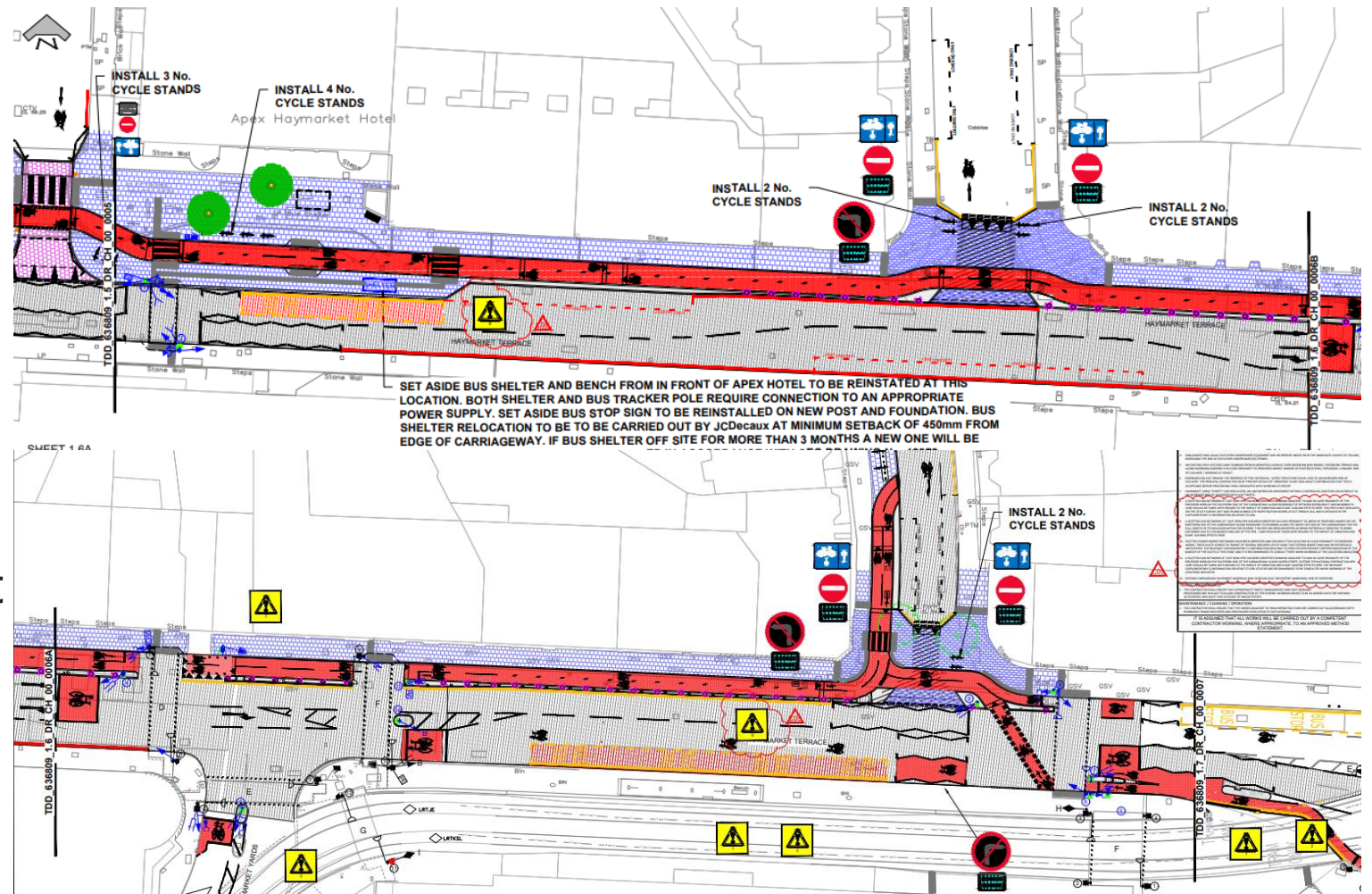
- New and upgraded crossings over main road
- Bus lanes retained where most beneficial
- Carriageway resurfacing
- Protected cycleway on north side of West Coates



CCWEL Section 1 Plans (Haymarket Area)

Proposals

- Wider upgraded footways
- New and upgraded crossings over main road
- Improved crossings of Wester Coates Ter and Wester Coates Rd
- Bus lanes retained where most beneficial
- Carriageway resurfacing
- Protected cycleway on north side of West Coates

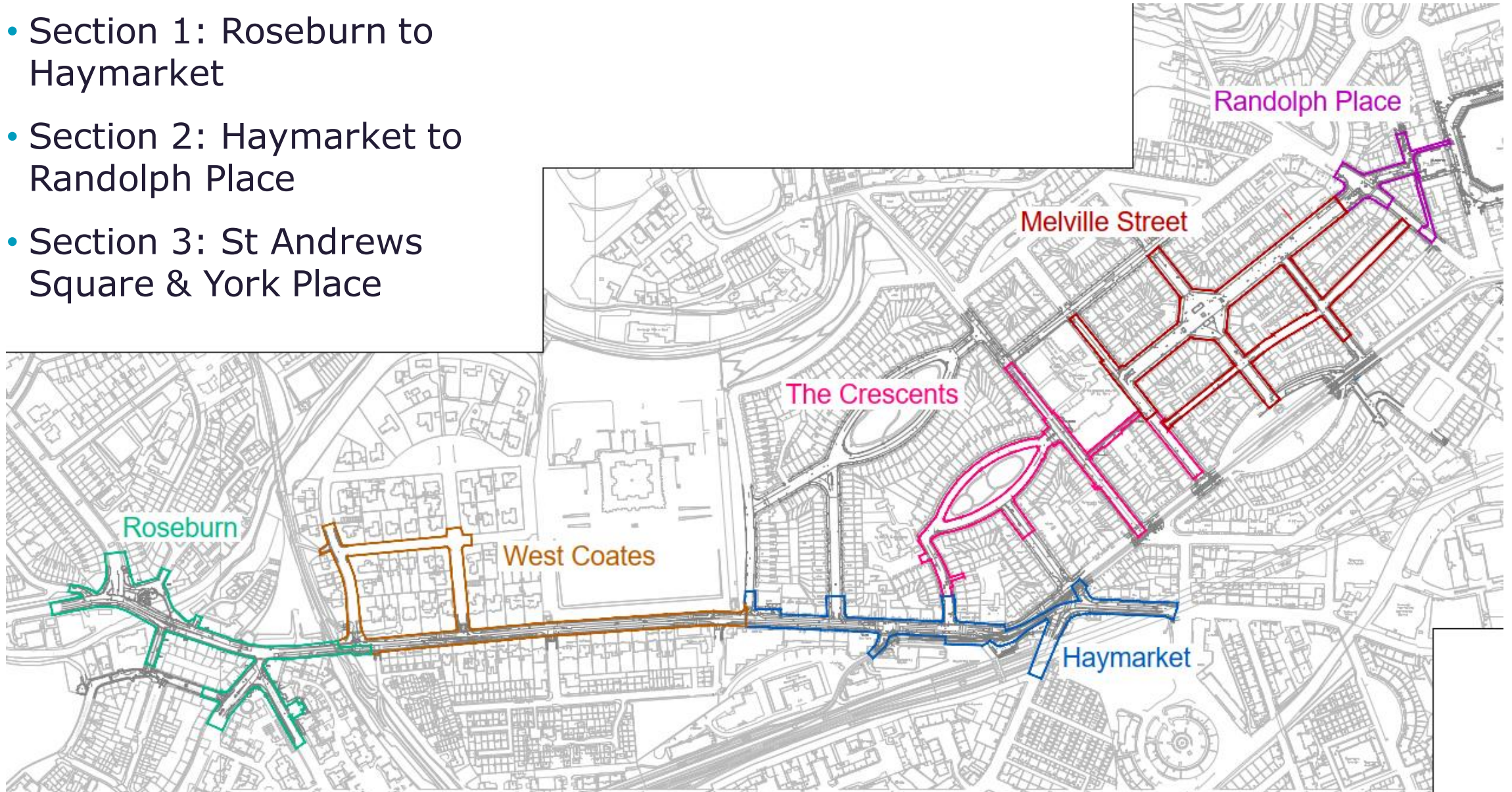


Construction and Traffic Management

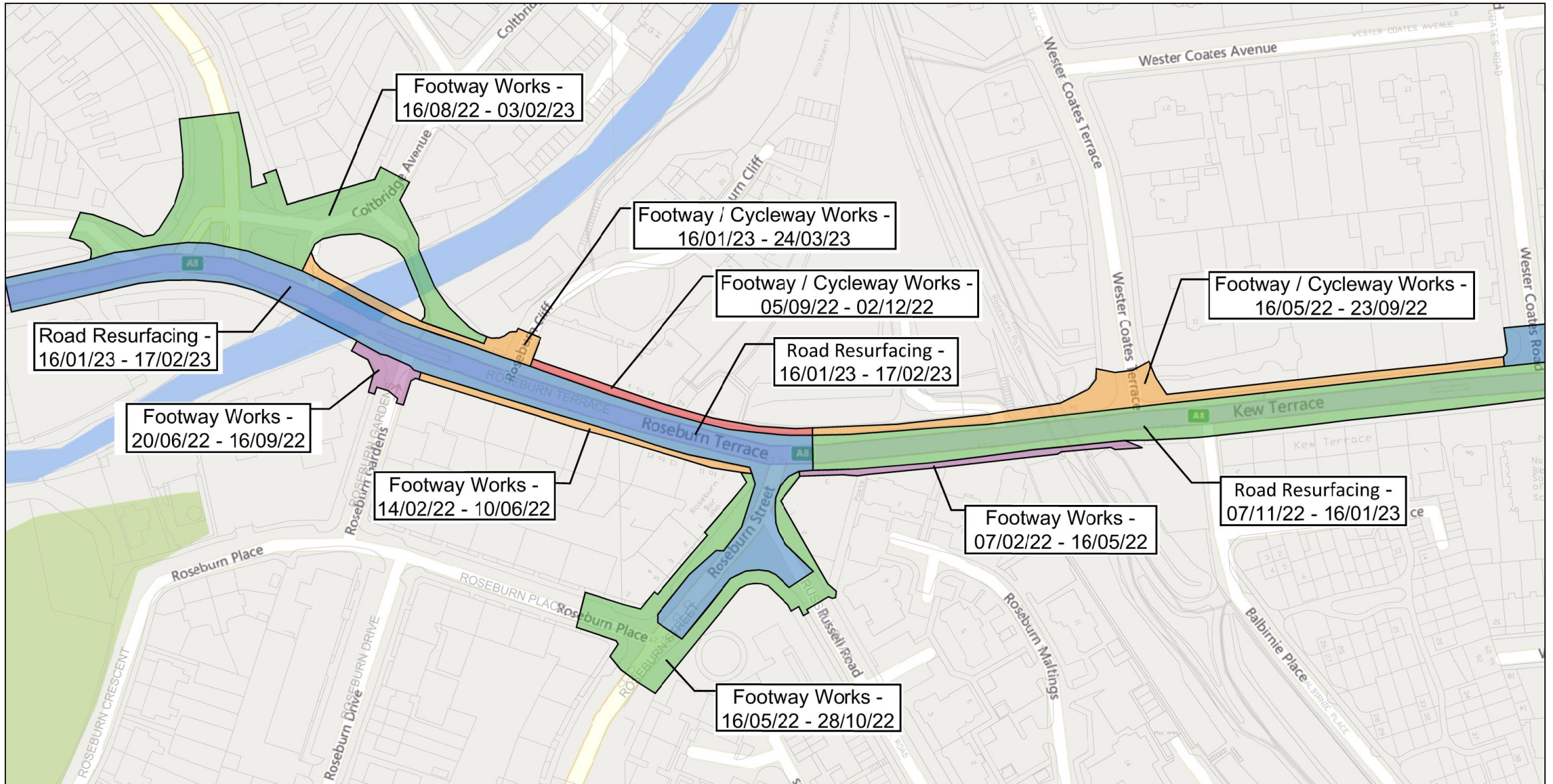
Scott Ritchie
Project Manager
Balfour Beatty

Location

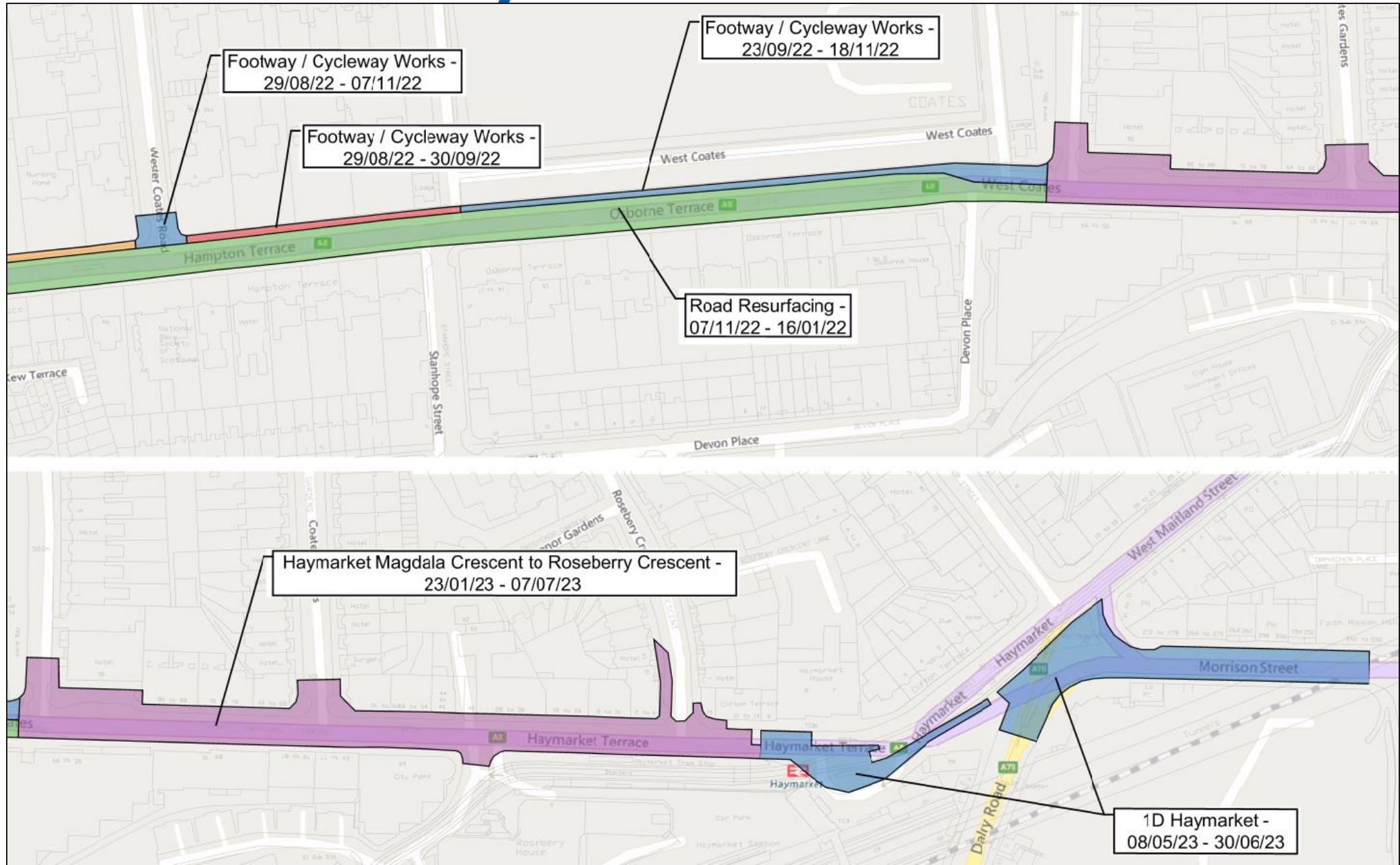
- Section 1: Roseburn to Haymarket
- Section 2: Haymarket to Randolph Place
- Section 3: St Andrews Square & York Place



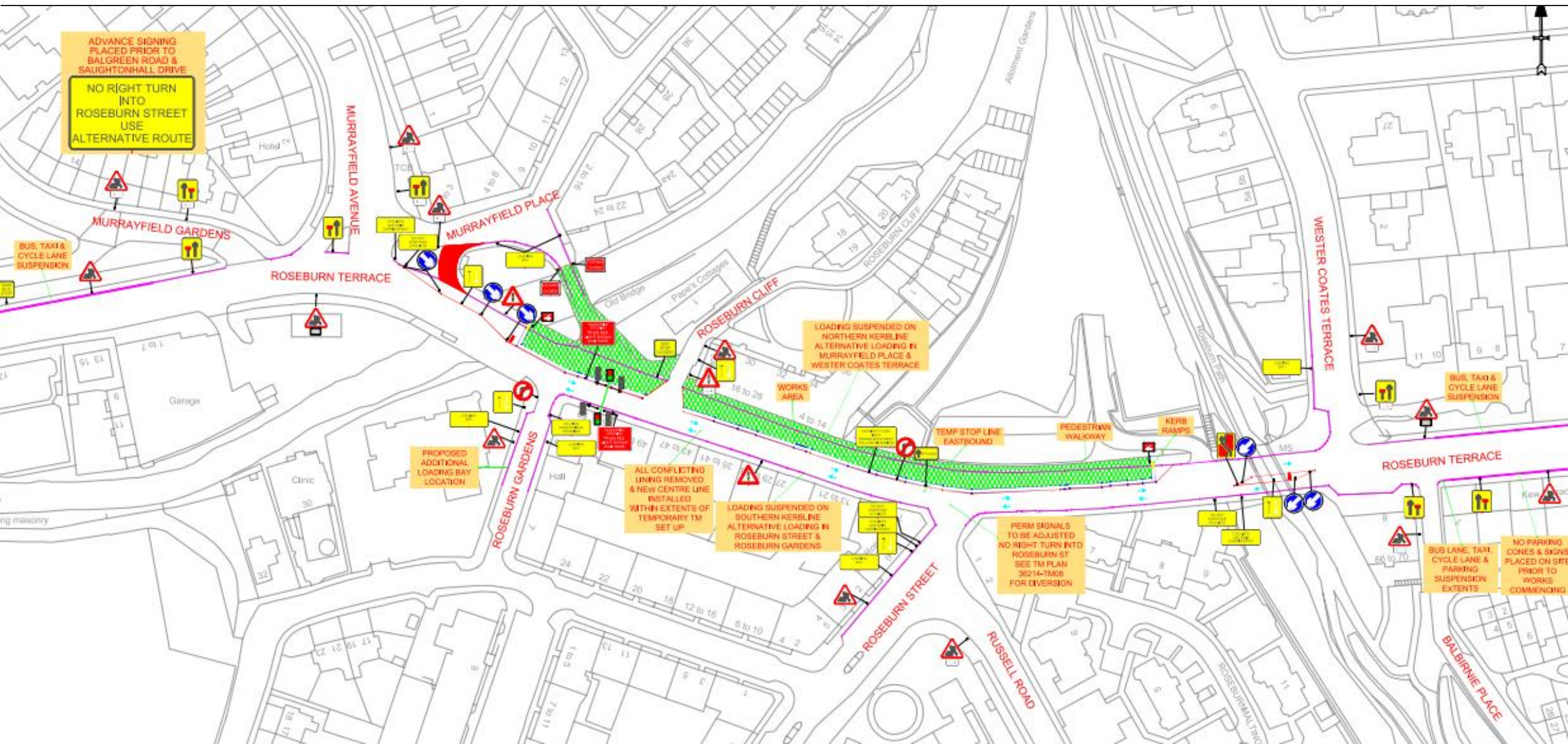
Roseburn to West Coates – Timescales



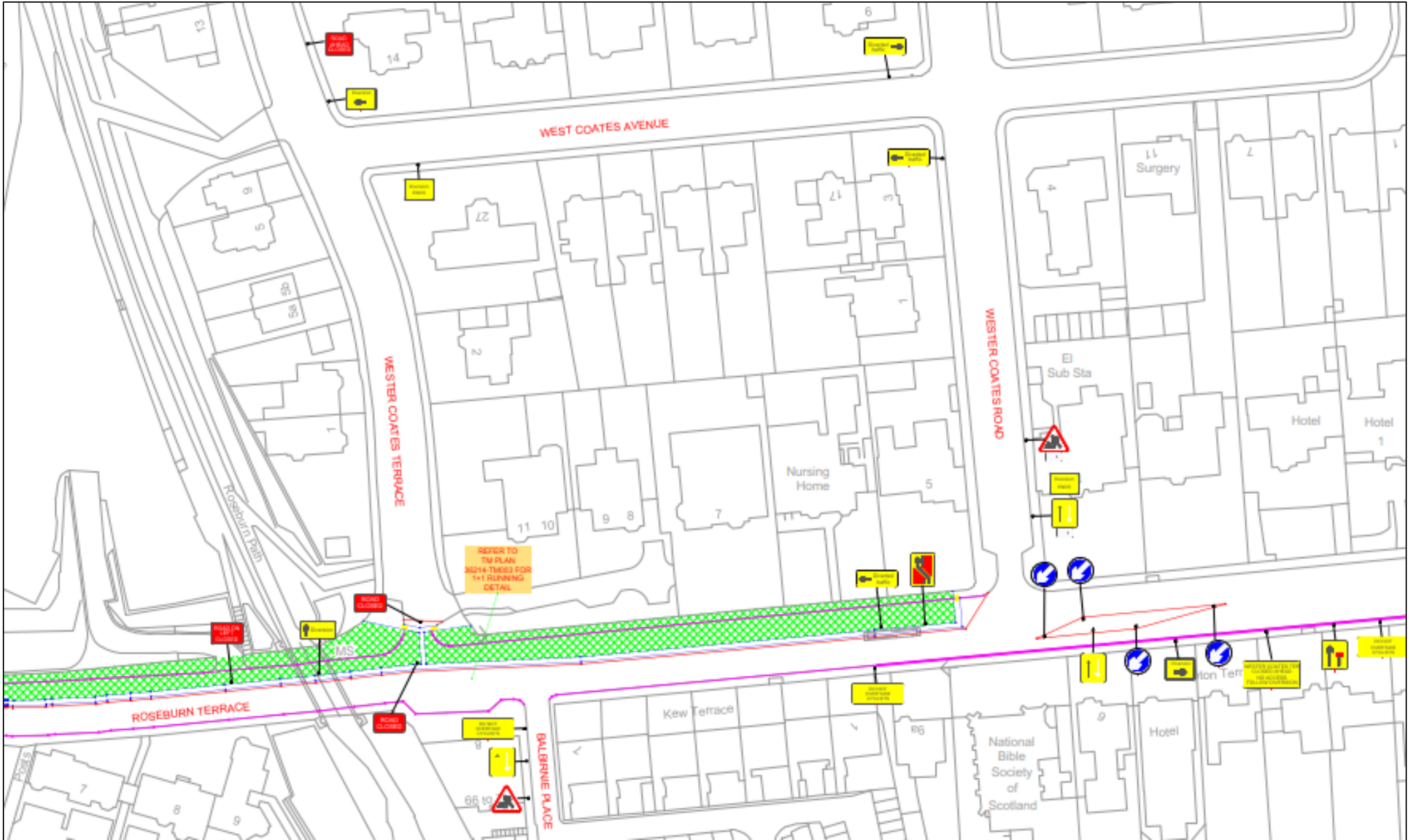
West Coates to Haymarket – Timescales



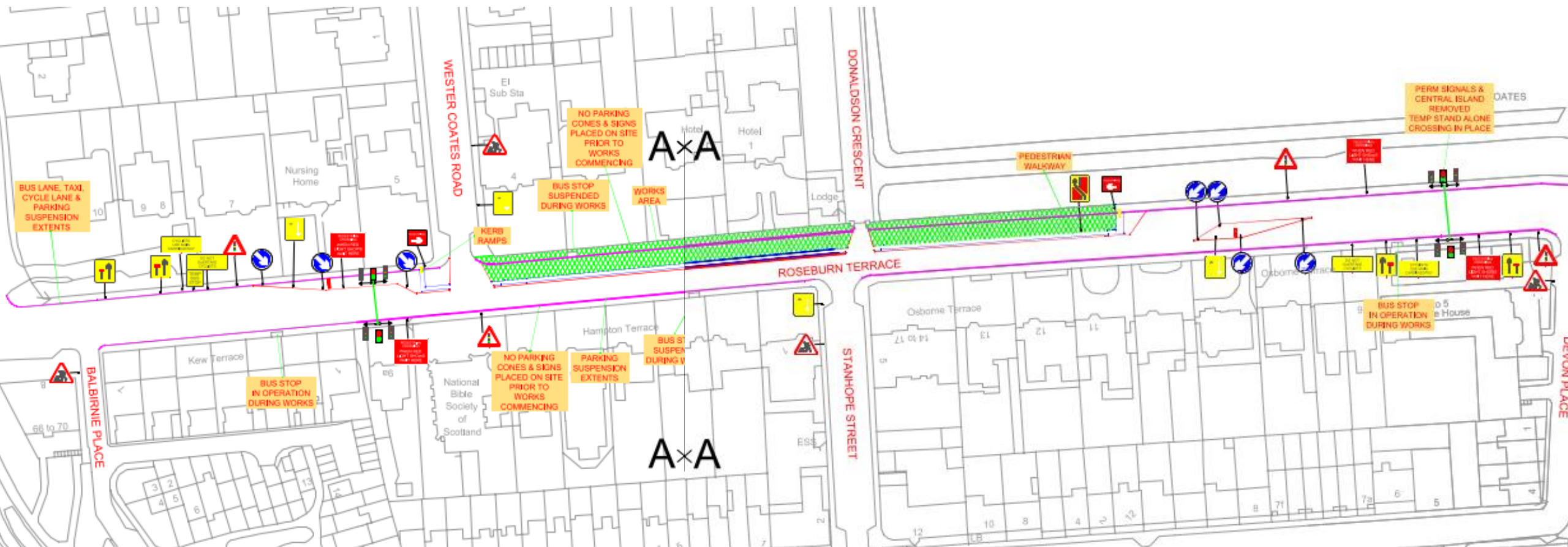
Roseburn Ter & West Coates – Traffic Management



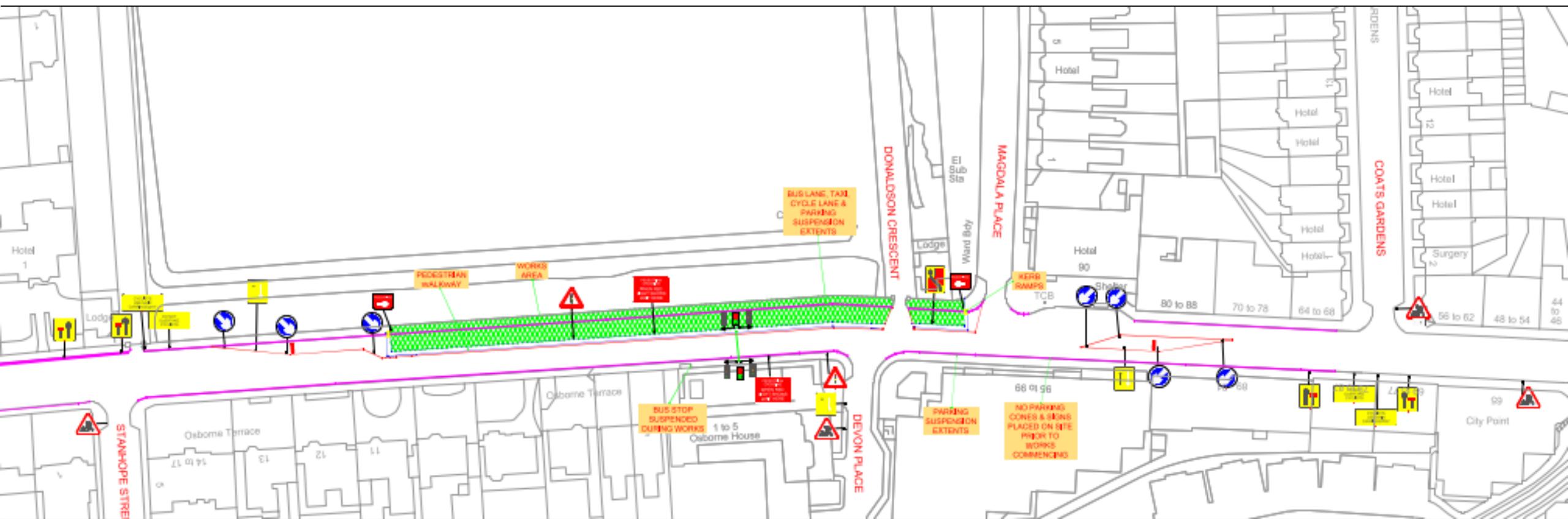
Roseburn Ter & West Coates – Traffic Management



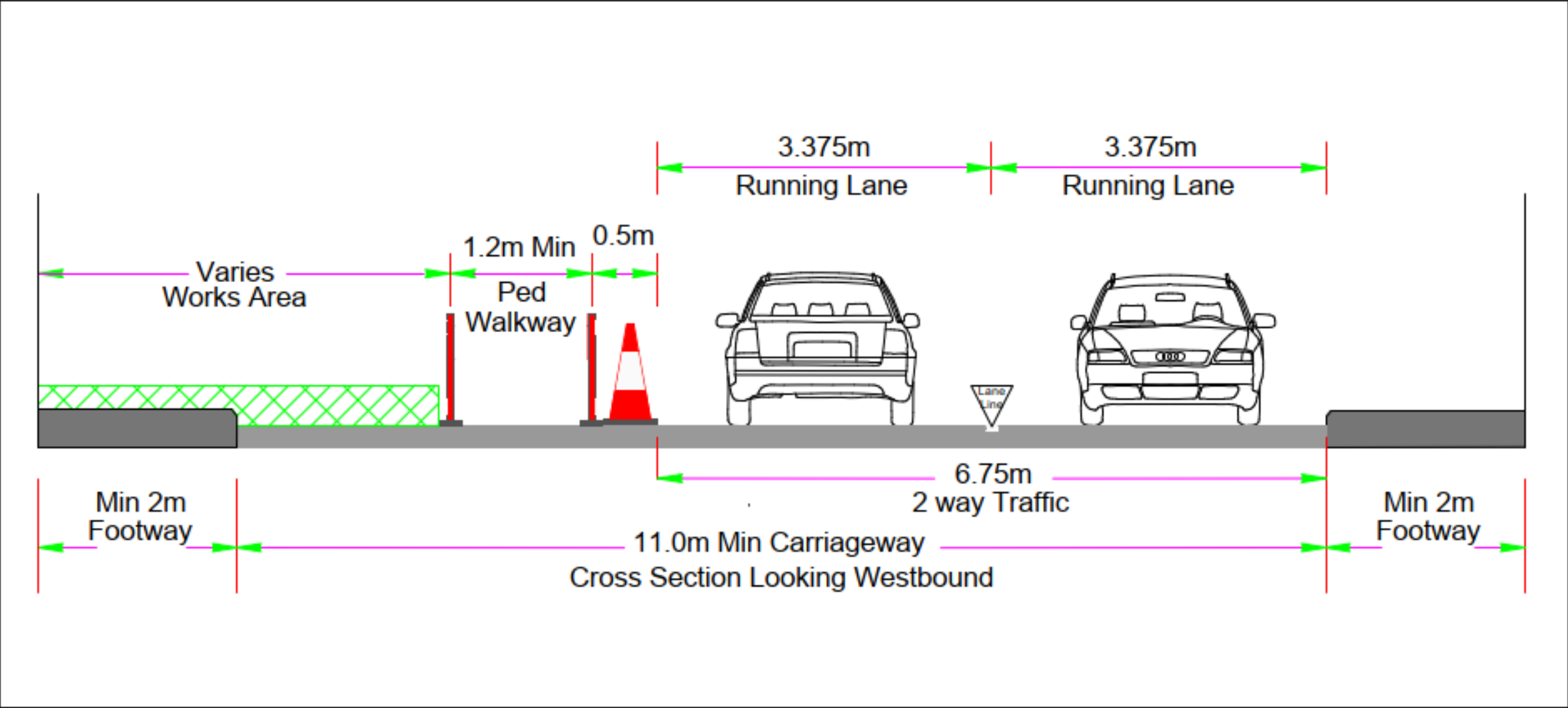
Roseburn Ter & West Coates – Traffic Management



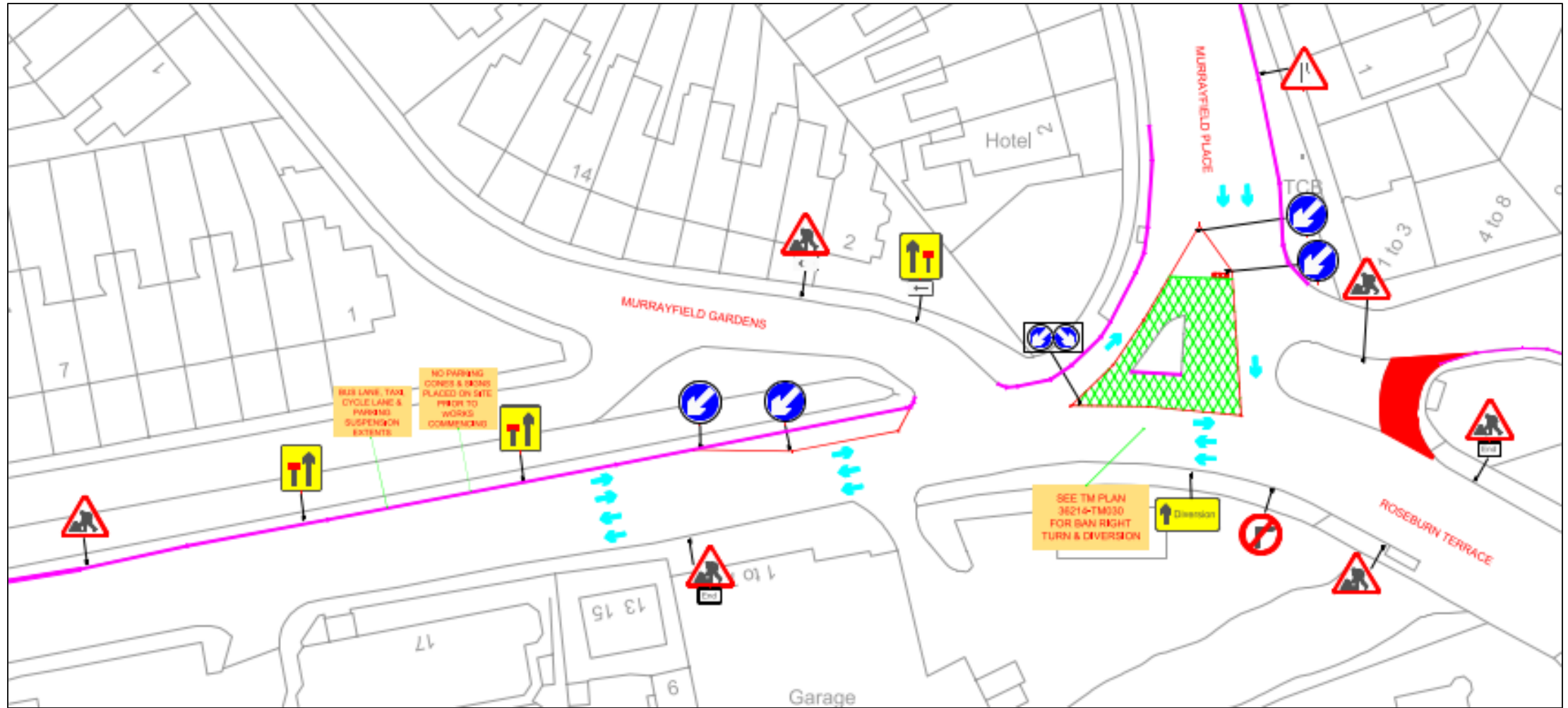
Roseburn Ter & West Coates – Traffic Management



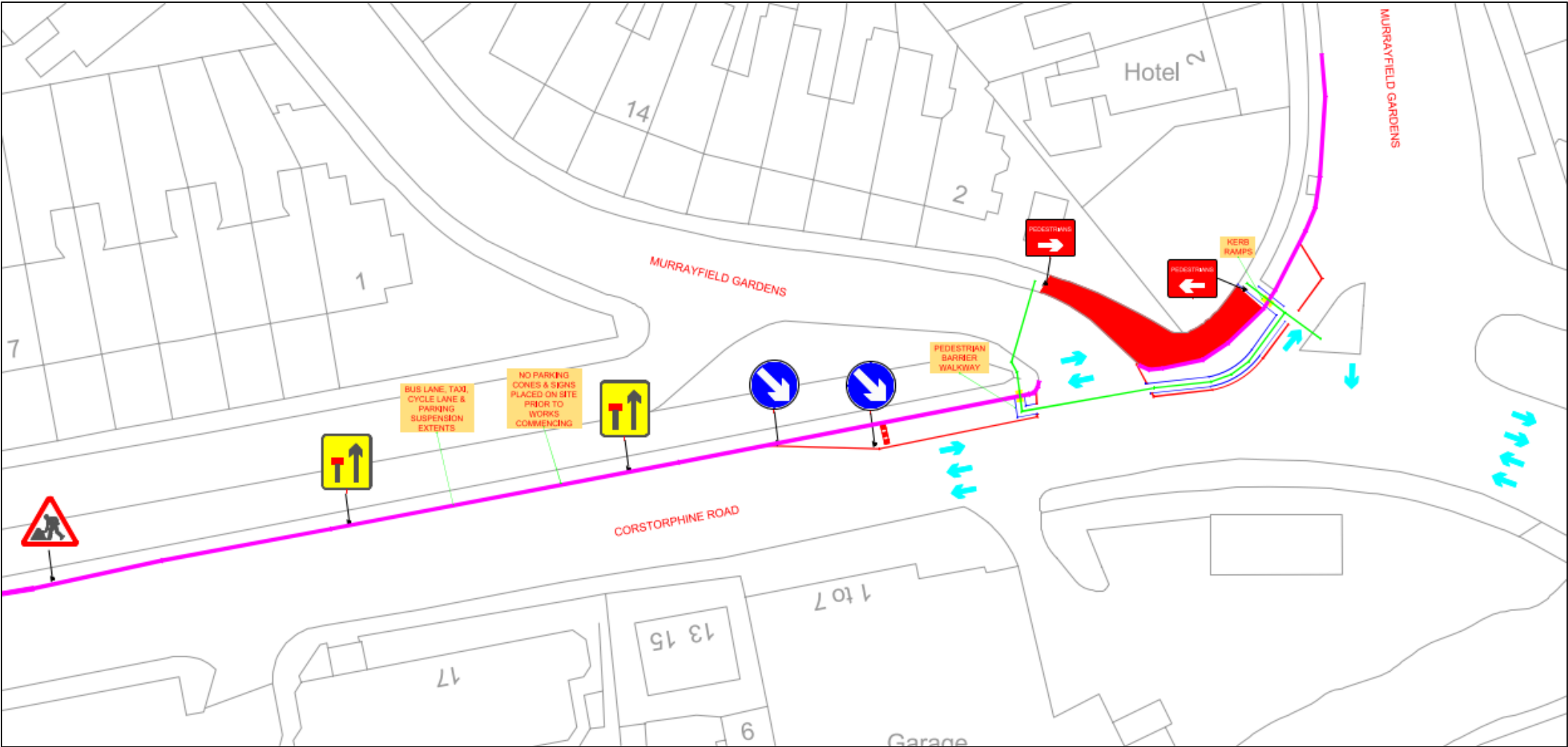
Roseburn Ter & West Coates – Traffic Management



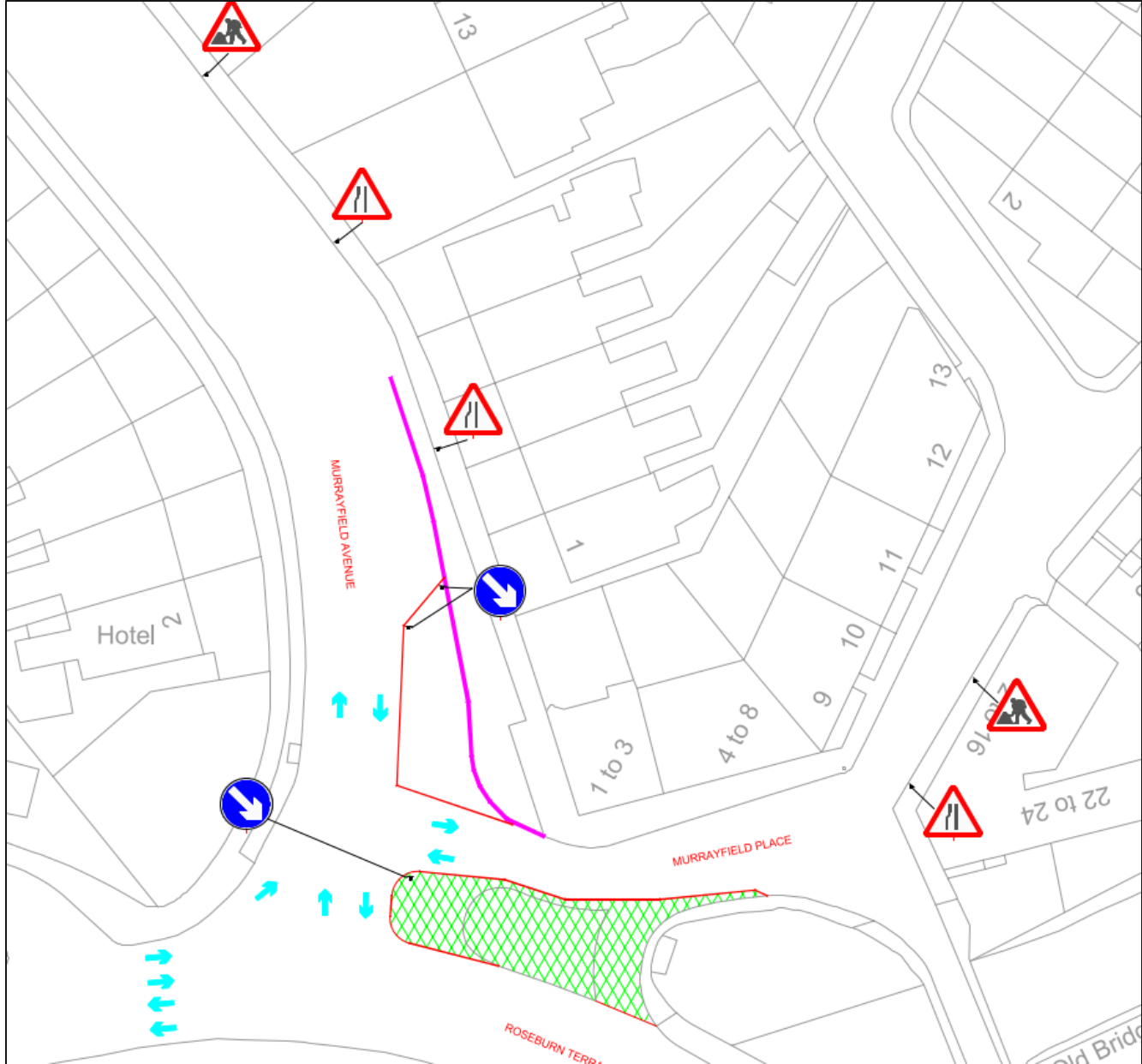
Murrayfield Avenue – Traffic Management



Murrayfield Avenue – Traffic Management



Murrayfield Avenue – Traffic Management



Roseburn & West Coates - key changes during works

Essential road layout and 'business as usual' changes

We will modify or reposition key items as follows:




- Parking Suspension on the A8 (Roseburn Terrace, West Coates, & Kew Terrace)
- Parking Suspension on Murrayfield Avenue
- Loading Bay Suspension on A8 (Roseburn Terrace, West Coates, & Kew Terrace)
 - Alternatives will be provided off the A8 for use by all stakeholders.
 - Supplementary trolleys or assistance will be provided to facilitate the movement of goods.
- Propose to re-commence liaison with Roseburn trader's spokesperson.
- Bus stops will be relocated to ensure they can stop and collect passengers in a safe location.

Questions

Social impact & sustainability initiatives

Duncan Gardner
Social Impact Manager
Balfour Beatty

Balfour Beatty Sustainability Strategy

			
	Environment Responding to climate change and managing our impact on the environment	Materials Choosing the right materials, using less materials and creating value from the materials we no longer need	Communities Improving the prosperity and wellbeing of individuals and communities
2040 Ambitions	Beyond Net Zero Carbon	Generate Zero Waste	Positively Impact More than 1 Million People
2030 Targets	Achieve our science-based carbon reduction target	40% reduction in waste generated	£3bn social value generated
	Local Sustainability Action Plans		

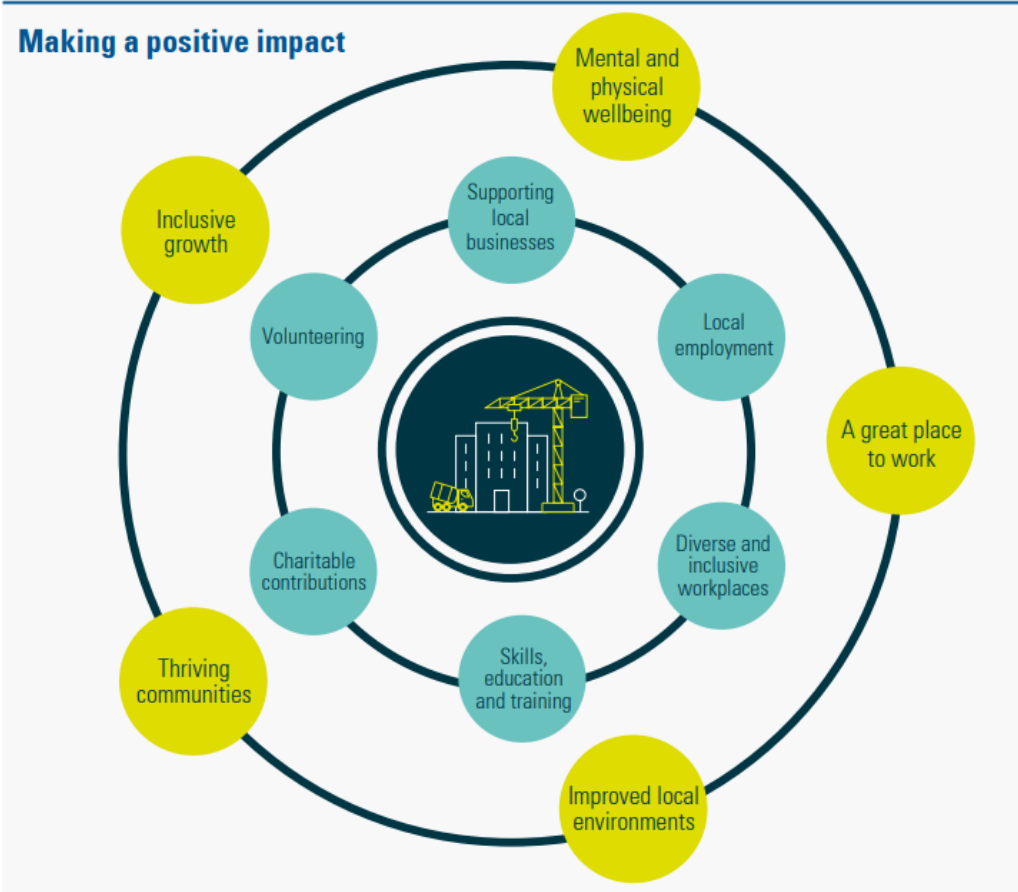
2030 target
 £3 billion social value generated

Measurement
 Social Value National TOMS Framework¹

Primary UN Sustainability Development Goals

8 DECENT WORK AND ECONOMIC GROWTH
 

11 SUSTAINABLE CITIES AND COMMUNITIES
 



Considerate Constructors Scheme

42/45

CCWEL First audit



37 Industry
Average Score

2022 CODE OF CONSIDERATE PRACTICE

Respect the Community

Constructors must manage their impact on their neighbours and the public to support a positive experience, by:

- 1.1 Ensuring courteous and respectful language and behaviour in and around the construction activity.
- 1.2 Providing a safe environment, preventing unnecessary disturbance, and reducing nuisance for the community from their activities.
- 1.3 Proactively maintaining effective engagement with the community to deliver meaningful positive impacts.

Care for the Environment

Constructors must minimise their impact and enhance the natural environment, by:

- 2.1 Prioritising environmental issues to protect the natural environment and minimise negative impacts.
- 2.2 Optimising the use of resources, including minimising carbon throughout the value chain.
- 2.3 Engaging with the community to improve the local environment in a meaningful way.

Value their Workforce

Constructors must create a supportive, inclusive, and healthy workplace, by:

- 3.1 Actively encouraging and supporting an inclusive and diverse workplace.
- 3.2 Proactively supporting safe working, mental and physical wellbeing at work.
- 3.3 Providing workplaces that are well maintained, clean and secure from physical and biological hazards.

Community benefits

- An overview of Balfour Beatty's plan to make a positive Social Impact in the community, during the CCWEL project.



Stage	Description of supplementary benefit
Pre-construction (present – Jan 21)	Identify a social enterprise / catering business, categorised within the 'high' intensity of engagement category.
Construction (post Jan 21)	Provision of advertising space for businesses impacted by CCWEL project.
Construction (post Jan 21)	Donation drives for local foodbank / charity
Construction (post Jan 21)	Virtual Schools engagement – using online platform to engage local pupils in the project through live learning. Themes including civil engineering / project management etc.
Construction (post Jan 21)	Support for CEC to install / maintain flower planters upon sections of route / engaging local community groups to take ownership of planters.
Construction (post Jan 21)	Cycle safety awareness event, engaging CLOCS / FORS to promote cycle safety around plant and heavy fleet. This event will give members of the public the opportunity to sit in a cabin of a typical plant/fleet vehicle to raise awareness of blind spots / cycle safety
Construction (post Jan 21)	Free cycle maintenance sessions for local residents
Construction (post Jan 21)	Cargo Bikes – for use during construction phase to reduce vehicle use

Clean Air Day 2022



- Dr Bike session
- Police Scotland Bike Marking
- Cycle Safety sessions for local school kids
- Sustainable construction showcase
- Bling your bike stall
- Cargo bike movement

Supporting Edinburgh Food Project

- First collection ready for delivery
- Further collections planned over project lifespan



E-Bikes for site transport



- E-bikes on site for staff to access the work sites
- Reducing strain on local road network and reducing project carbon footprint
- Tracking and reporting of miles saved
- Promoting other sustainable travel options (train, tram)

Education engagement programme

- Primary school poster competition
- Careers and STEM activities for local secondary pupils



Upcoming: 'Pollinator Highway' planter workshops



- Upcycling sessions to turn waste pallets into planters for use in the community
- Supported by the Balfour Beatty team and delivered with local community groups

What matters to you?

- We want to know what matters to you in your community and where we might be able to support ideas, organisations or projects are happening in the community.
- ccwel@edinburgh.gov.uk FAO Duncan Gardner

Communications & engagement

Eileen Hewitt

Transport Officer, Active Travel

The City of Edinburgh Council

Local community engagement



Important to ensure good communication between the Council, Balfour Beatty and the community

- Let you know about key dates and construction plans in advance
- Use door to door letter drops, project updates, email, website, engagement sessions
- Keep your local councillors and Community Council informed
- Encourage your community to be involved through schools, community organisations and businesses



Feedback and raising issues

- We welcome your feedback at all times
- Please email us at ccwel@edinburgh.gov.uk



Campaign overview



Since the start of CCWEL construction we have been running a campaign to help:

- ▶ minimise disruption
- ▶ keep people informed on progress
- ▶ support local residents and businesses

We will continue to:

- ▶ where appropriate, run an 'open for business' campaign
- ▶ share information on traffic management and construction to help minimise disruption
- ▶ Longer term - encourage more people to choose active travel to visit and move through the area

Activity

- Website, media, social media, community media advertising, lamppost wraps, banners to dress construction site fencing.



edinburgh.gov.uk/ccwel



Questions

Thank you