

Business and Community Forum

3rd August 2022

**CCWEL: Section 2 Haymarket
to Randolph Place**



Agenda

- Introduction – Rurigdh McMeddes (The City of Edinburgh Council)
- Construction and traffic management – Scott Ritchie (Balfour Beatty)
- Social impact & sustainability initiatives – Duncan Gardner (Balfour Beatty)
- Questions
- Communications and engagement – Eileen Hewitt (The City of Edinburgh Council)
- Questions and AOB

Introduction

Rurigdh McMeddes

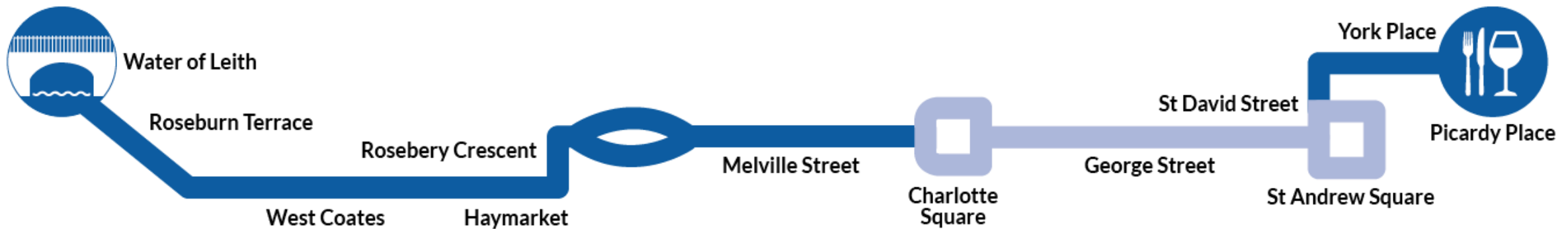
Senior Project Manager, Active Travel

The City of Edinburgh Council

Section 2 Timeline



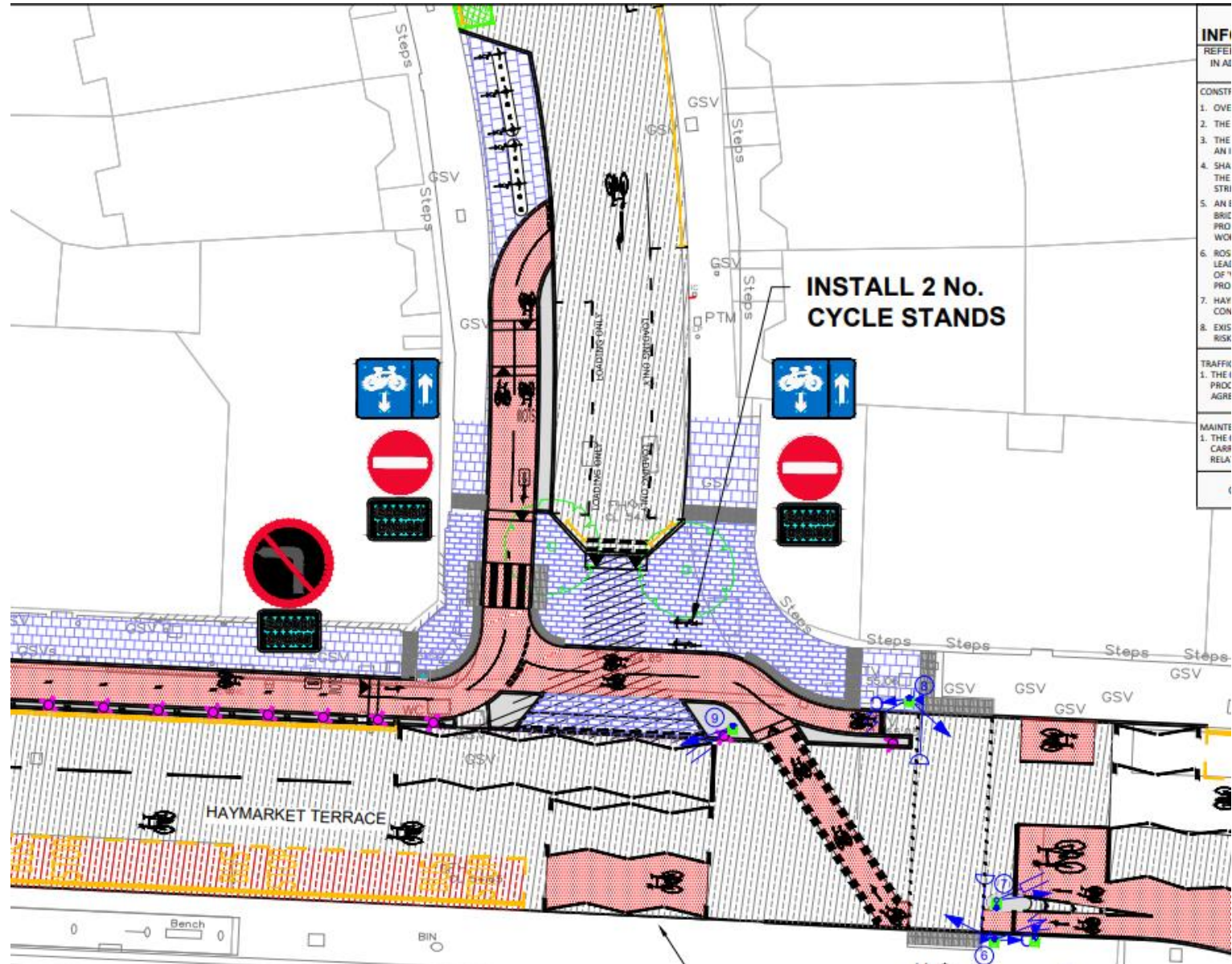
- Winter 2015/16 – Initial consultation and stakeholder engagement
- August 2016 – Approved preliminary designs
- April/May 2019 – Statutory consultation (TRO / RSO)
- June 2021 – Approval of Statutory Orders (TRO / RSO)
- October 2021 – Appointment of Balfour Beatty as Principal Contractor
- February 2022 – Work commences



CCWEL Section 2 Plans

Proposals

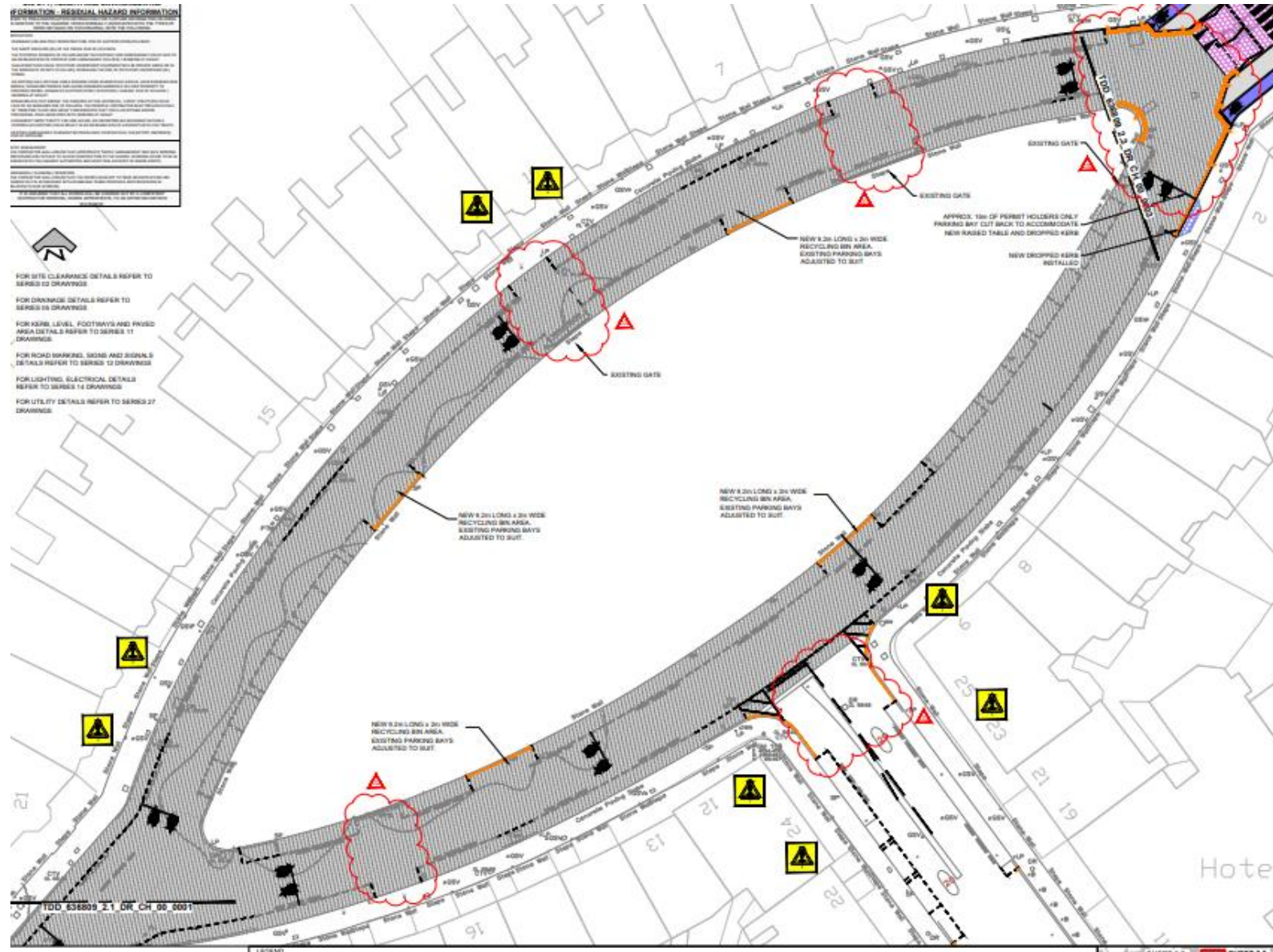
- CCWEL route transitions from Section 1 on the A8, to Section 2 at Rosebery Crescent.
- Rosebery Crescent changed to 'Exit Only', with crossing improvements at junctions.
- Loading provided for adjacent businesses.
- Bi-directional cycleway turns into Rosebery Crescent before integrating with carriageway.



CCWEL Section 2 Plans

Work so far

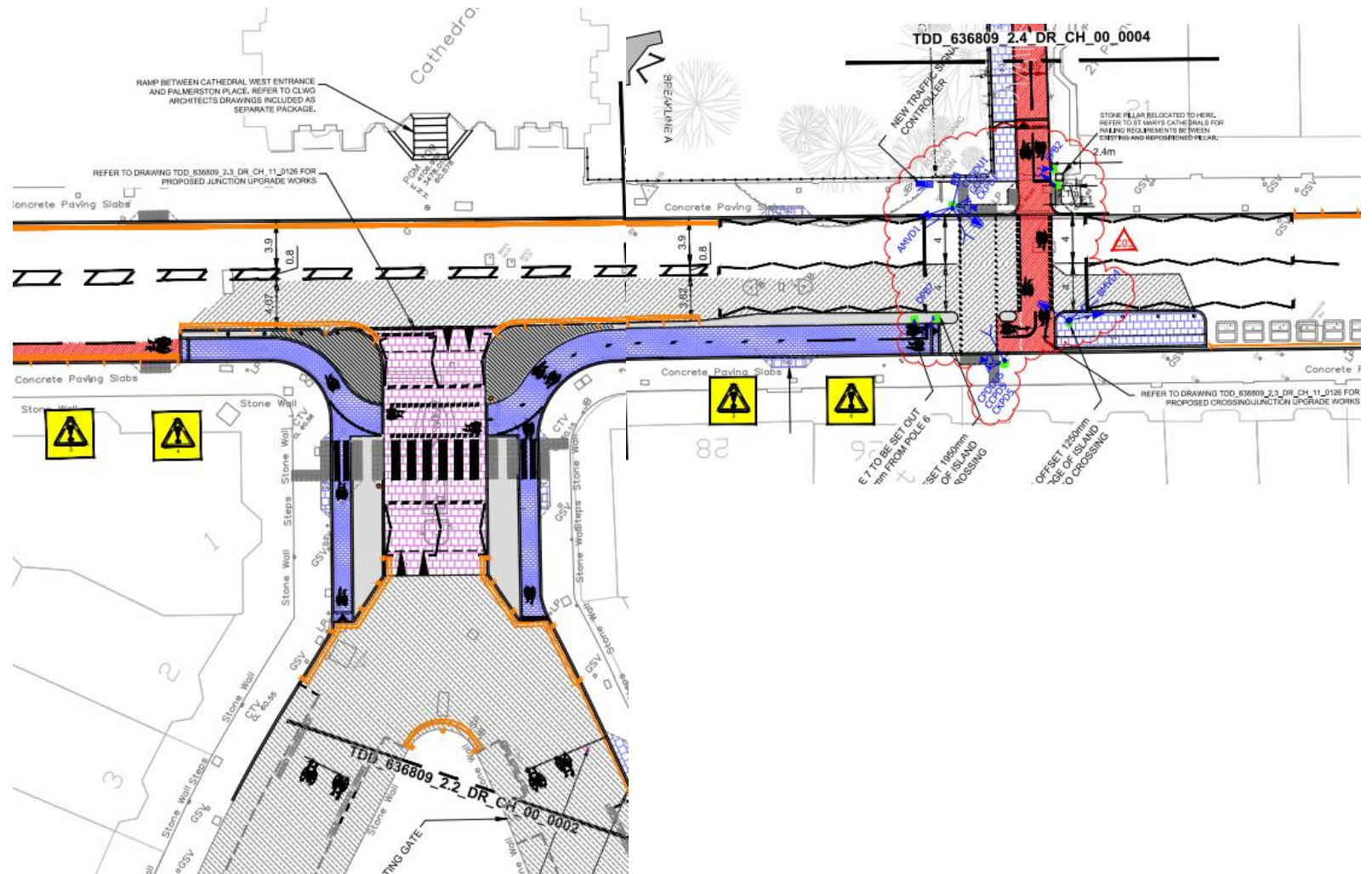
- Carriageway resurfacing on Rosebery, Grosvenor and Lansdowne Crescent
- Cycling catered for on carriageway due to quiet streets.
- Works now complete.



CCWEL Section 2 Plans

Work so far

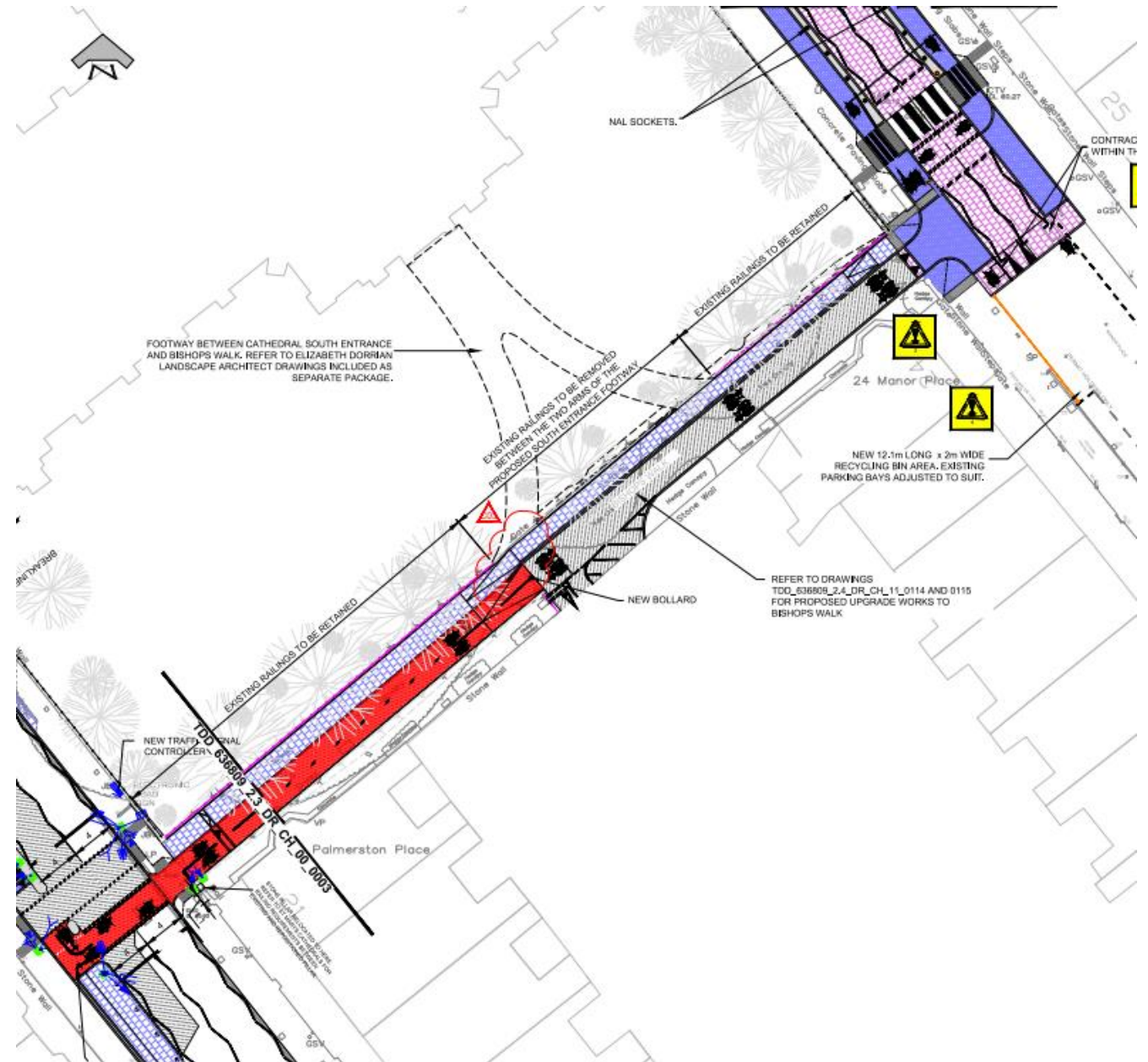
- New cycleways
- New crossings over Grosvenor Crescent at junction and Palmerston Place
- Works approaching completion.



CCWEL Section 2 Plans

Work so far

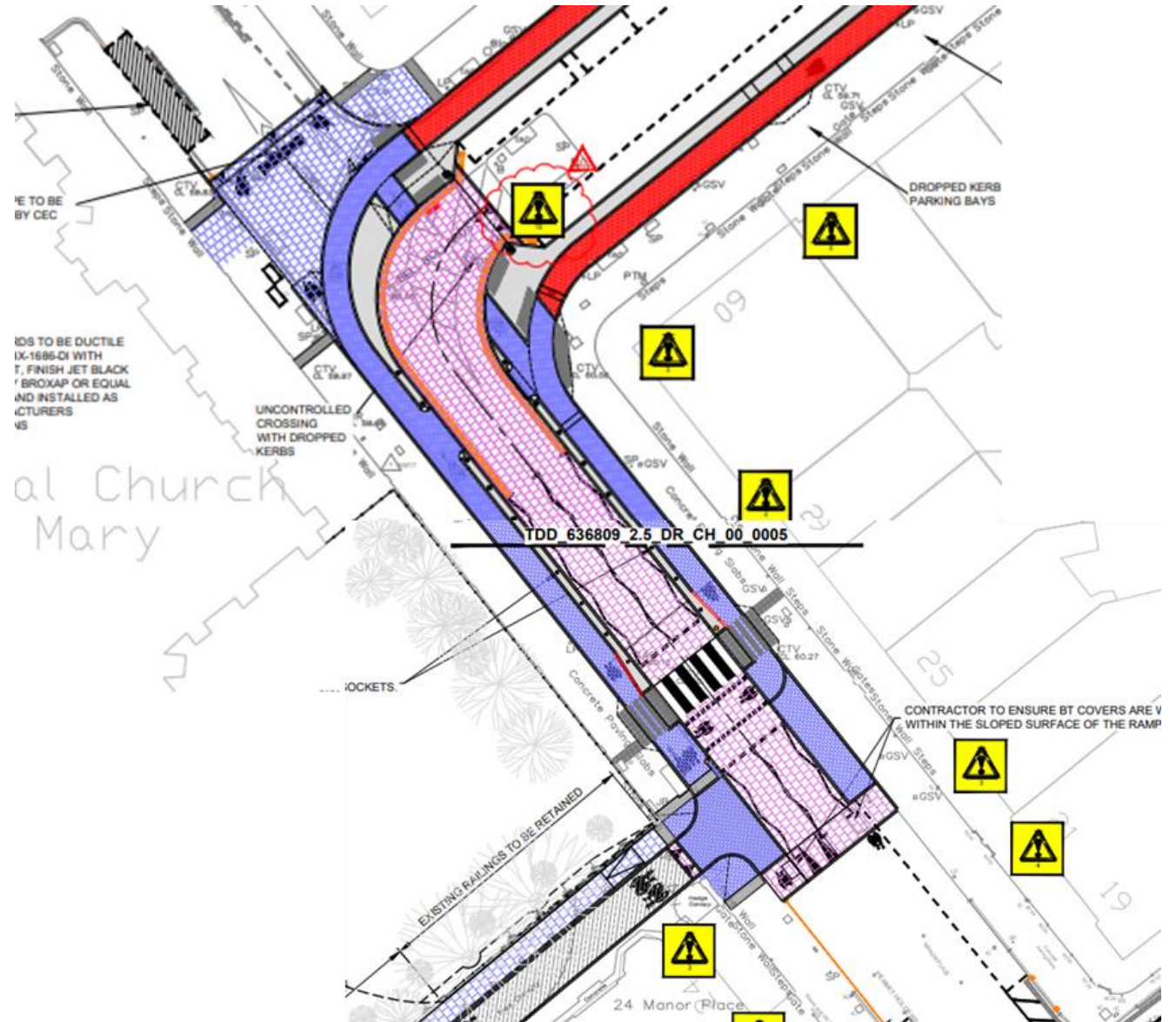
- New cycleway on existing verge on Bishops Walk
- New and improved footways
- New Zebra crossing and traffic calming at Manor Place
- Works approaching completion.



CCWEL Section 2 Plans

Proposals

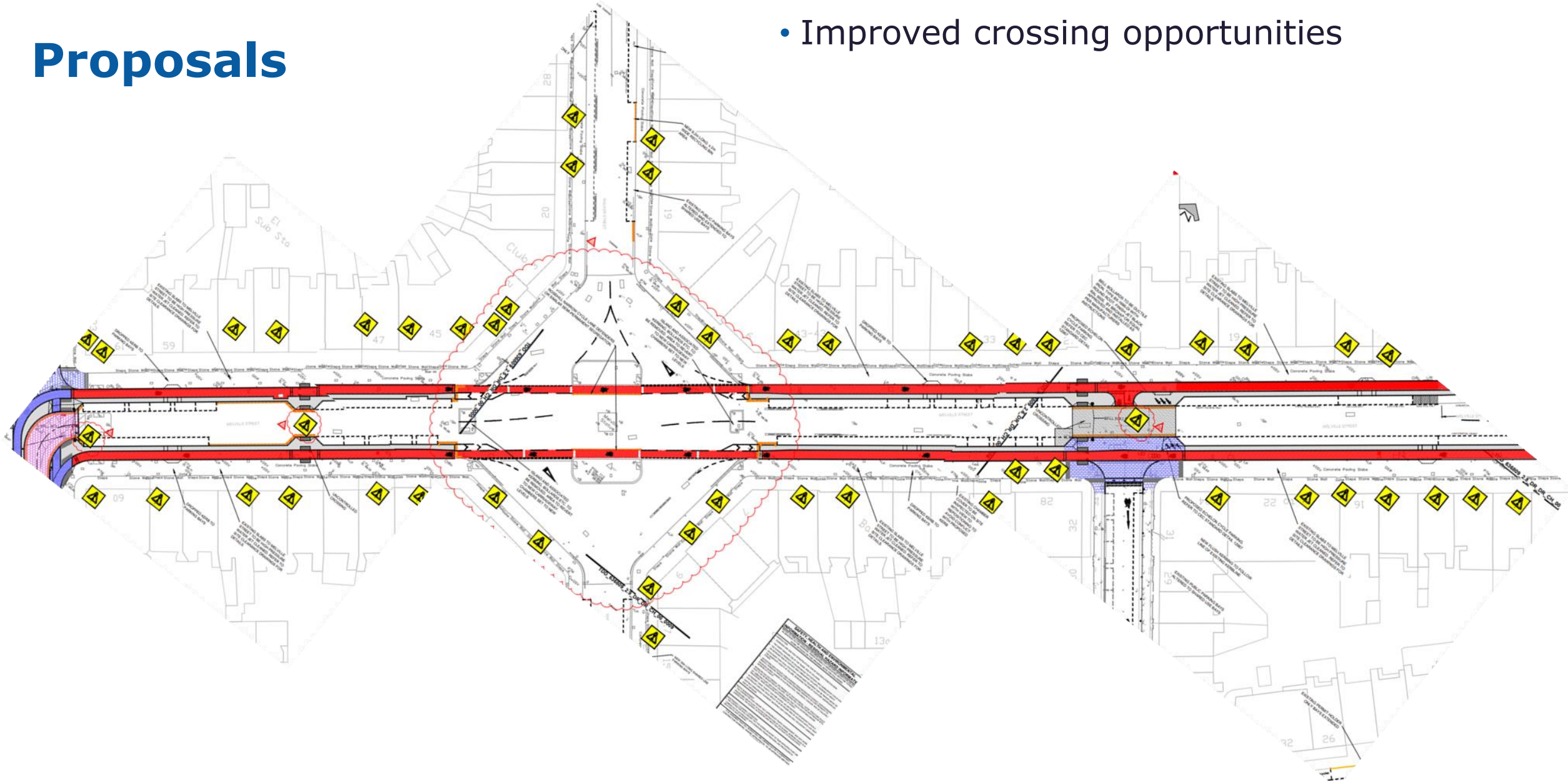
- New cycleways on Manor Place
- Manor Place closure north of Melville Street
- Raised table traffic calming and New Crossing



CCWEL Section 2 Plans

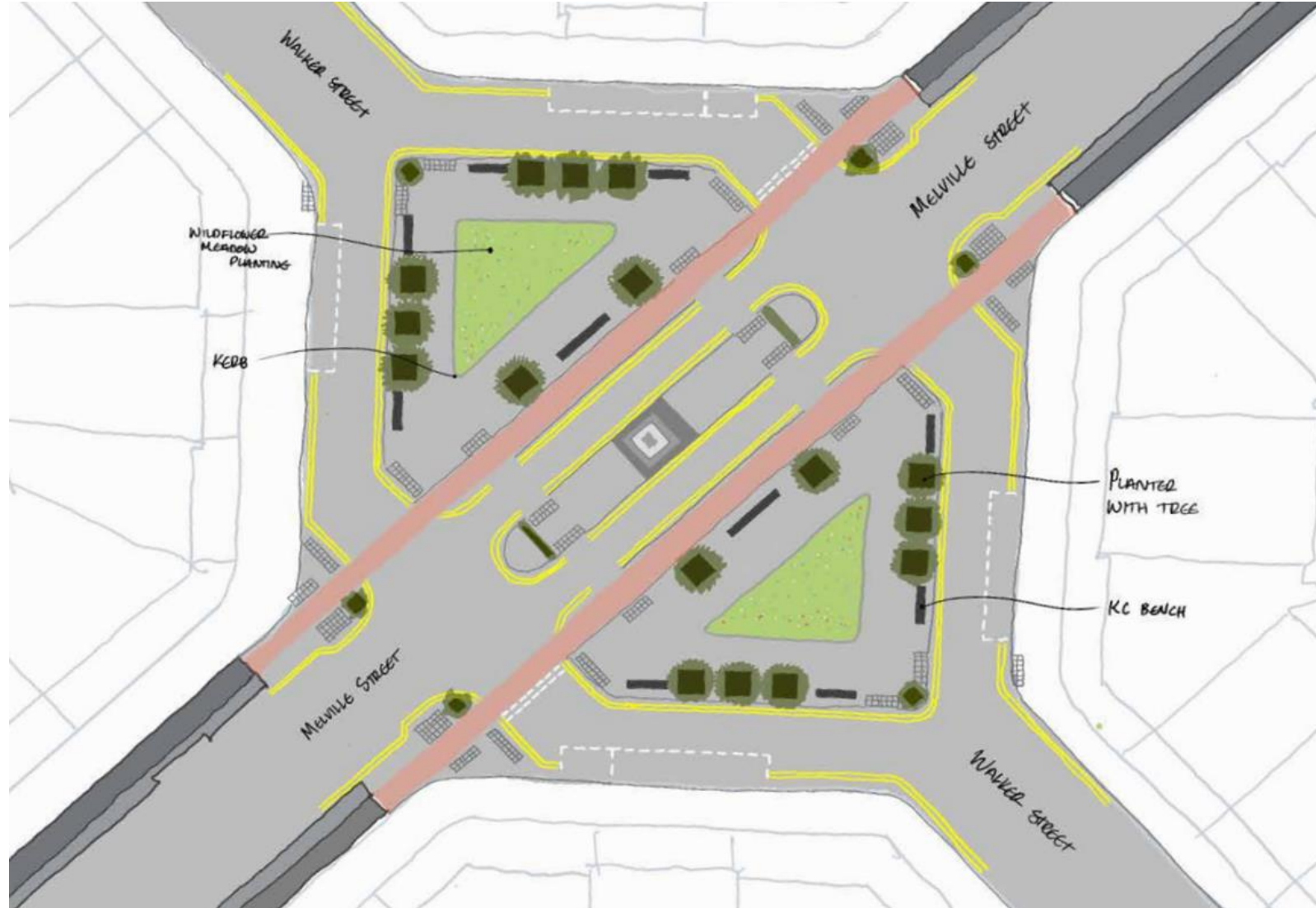
Proposals

- New protected cycleways on Melville Street
- Central parking removed
- Improved crossing opportunities



CCWEL Section 2 Plans

Proposals



Design Approach

The introduction of wildflower meadow to the central congregation area. This will provide a contrast to the wider hard surfaces and built form. Bringing some soft landscaping to a very hard area.

The benefits include increased biodiversity for birds and insect as well as providing a green space for people to sit and take a break.

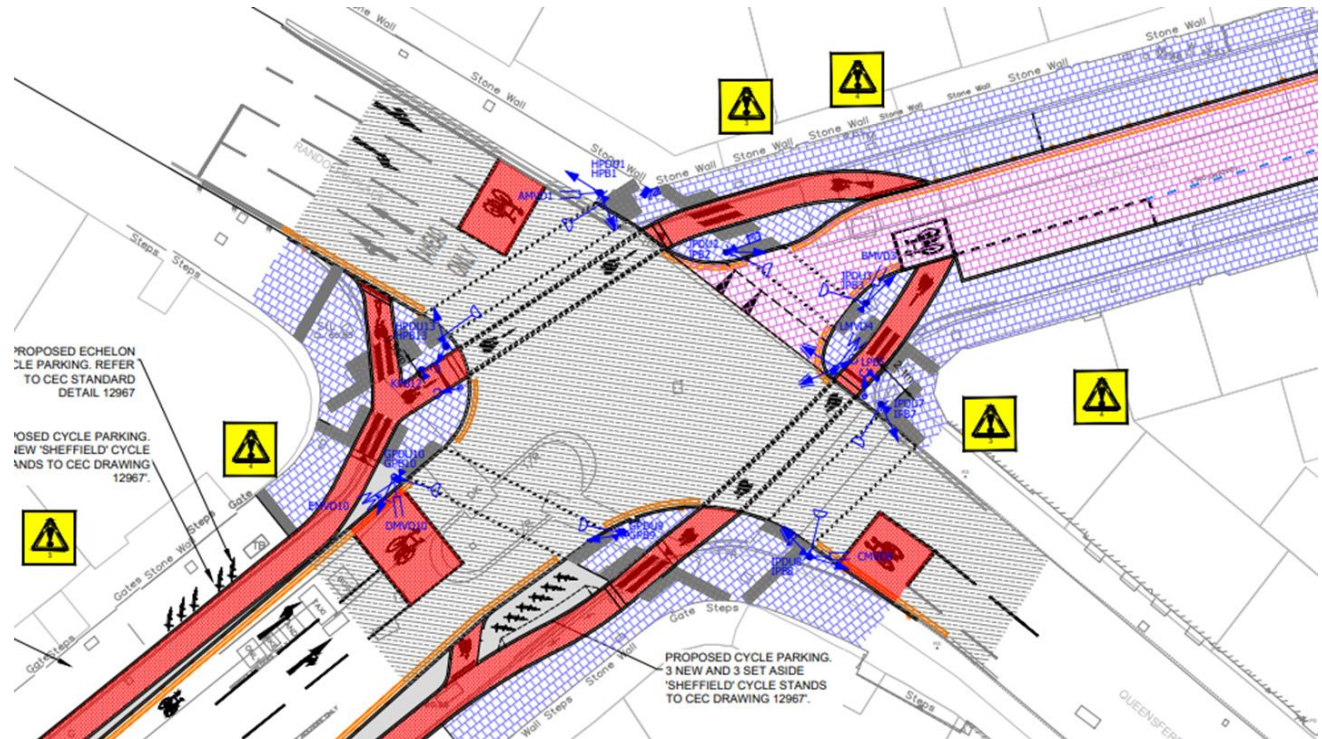
Materials

Planters, kerbs, topsoil, wildflower mix, benches.

CCWEL Section 2 Plans

Proposals

- New cycleways on Manor Place
- Manor Place closure north of Melville Street
- Raised table traffic calming and New Crossing

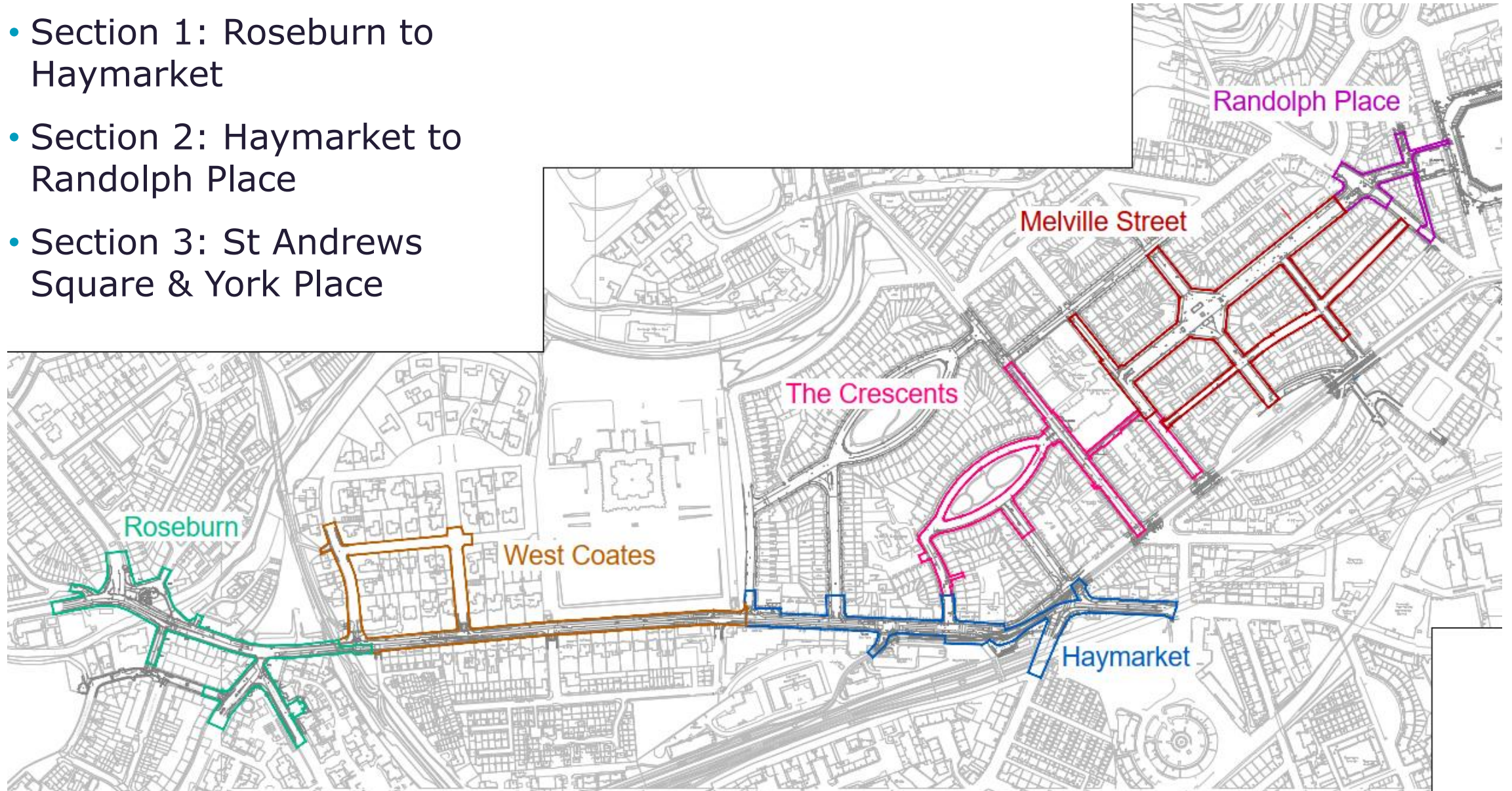


Construction and Traffic Management

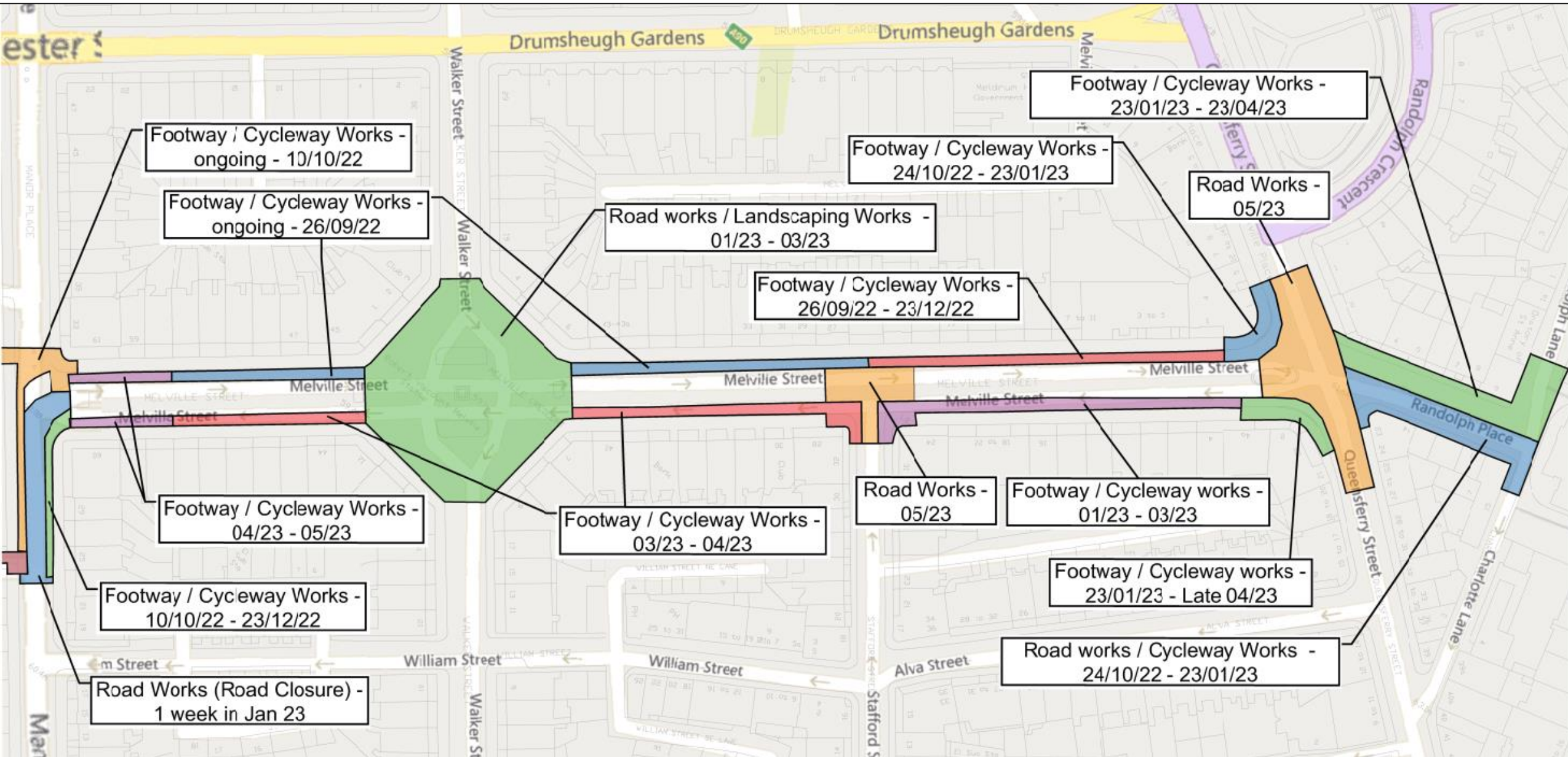
Scott Ritchie
Project Manager
Balfour Beatty

Location

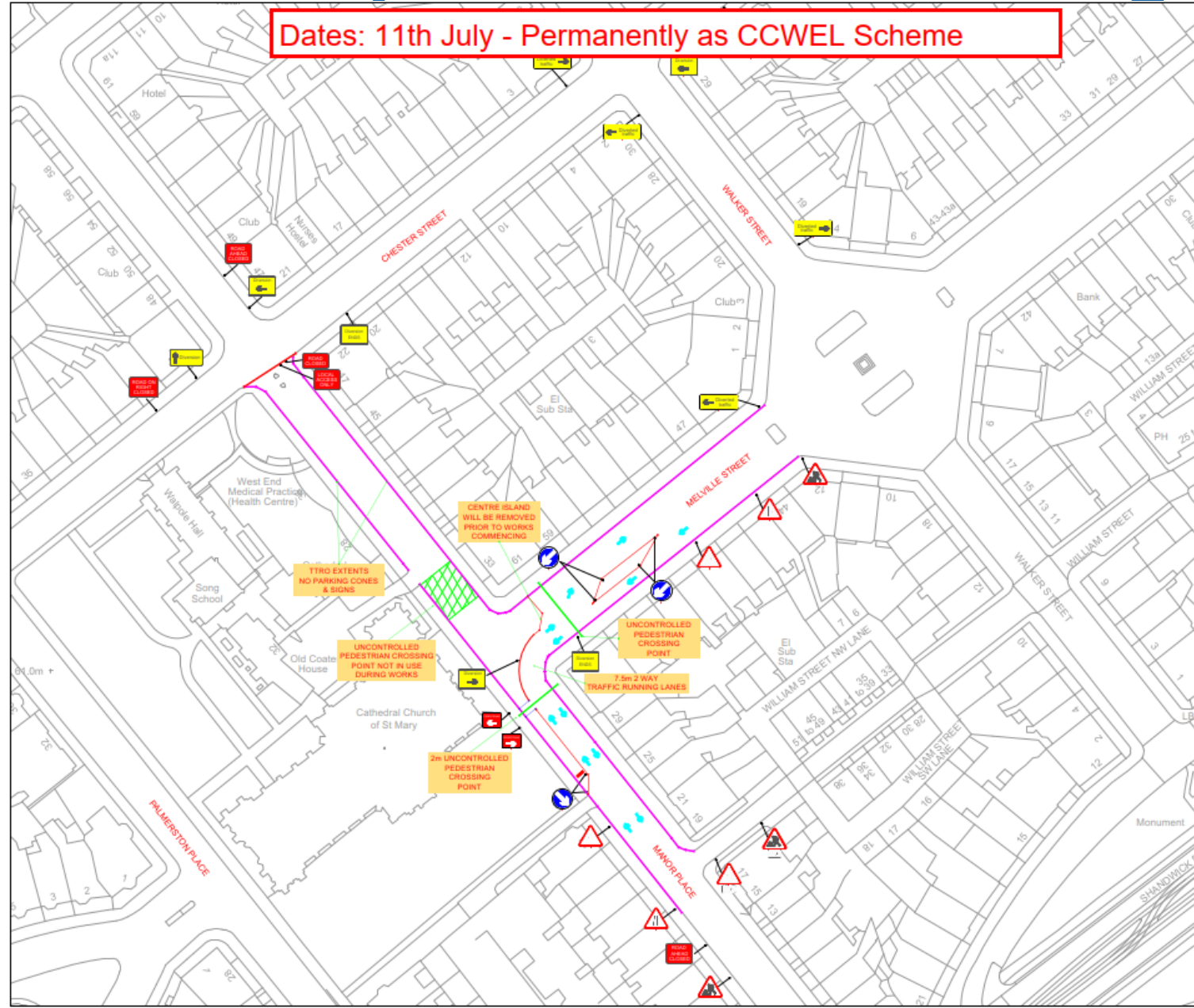
- Section 1: Roseburn to Haymarket
- Section 2: Haymarket to Randolph Place
- Section 3: St Andrews Square & York Place



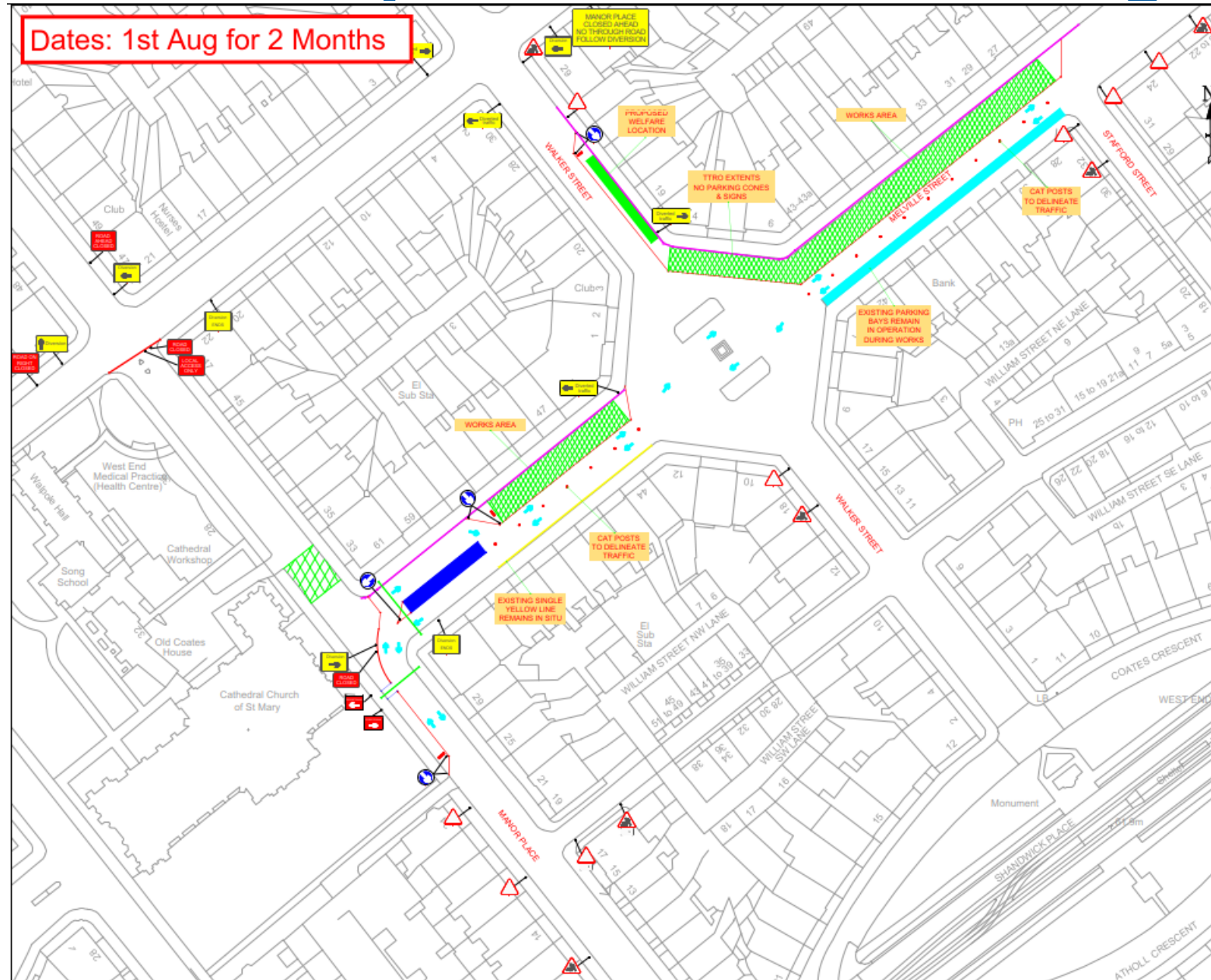
Manor Place to Randolph Place – Timescales



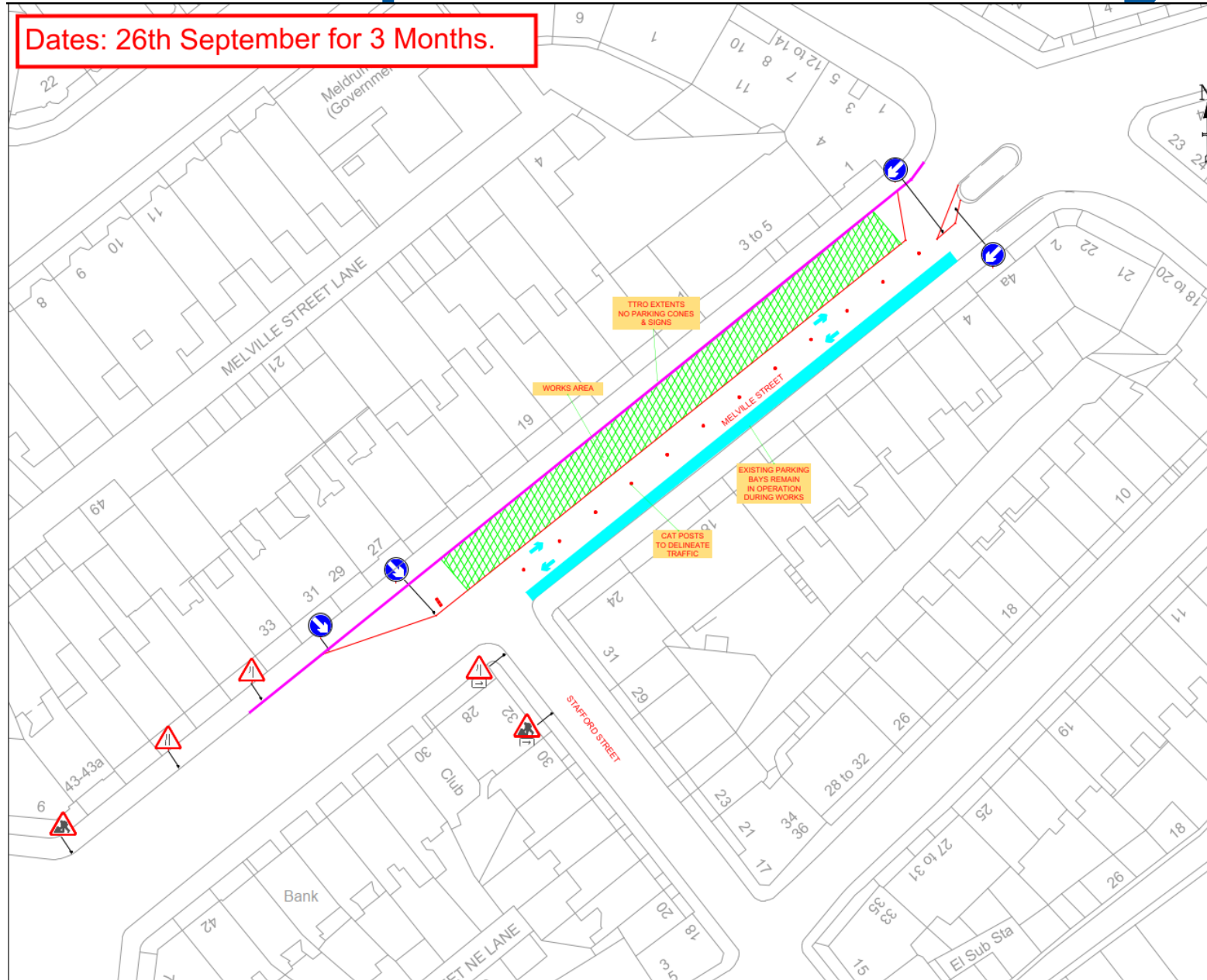
Manor PI to Randolph PI – Traffic Management



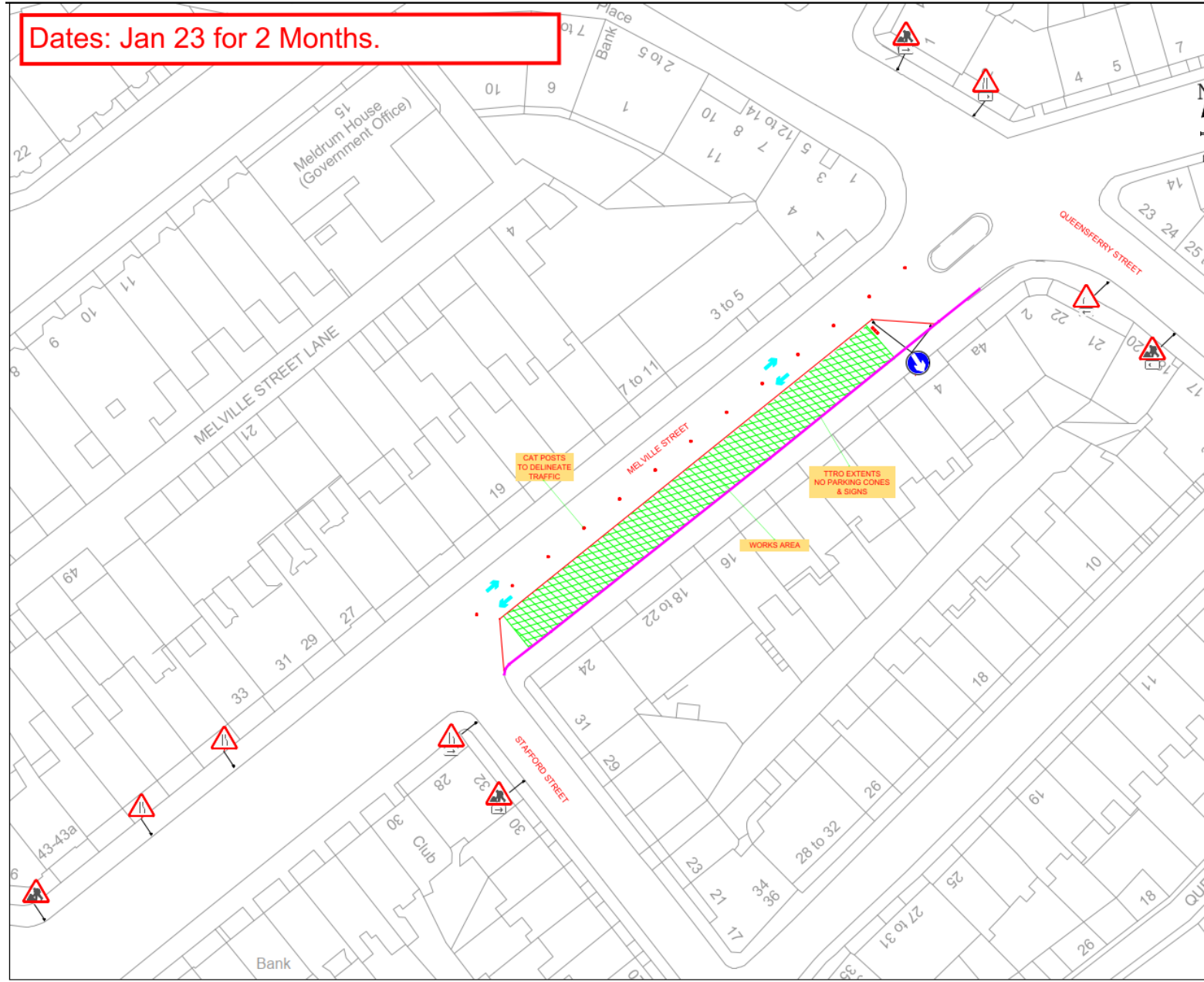
Manor PI to Randolph PI – Traffic Management



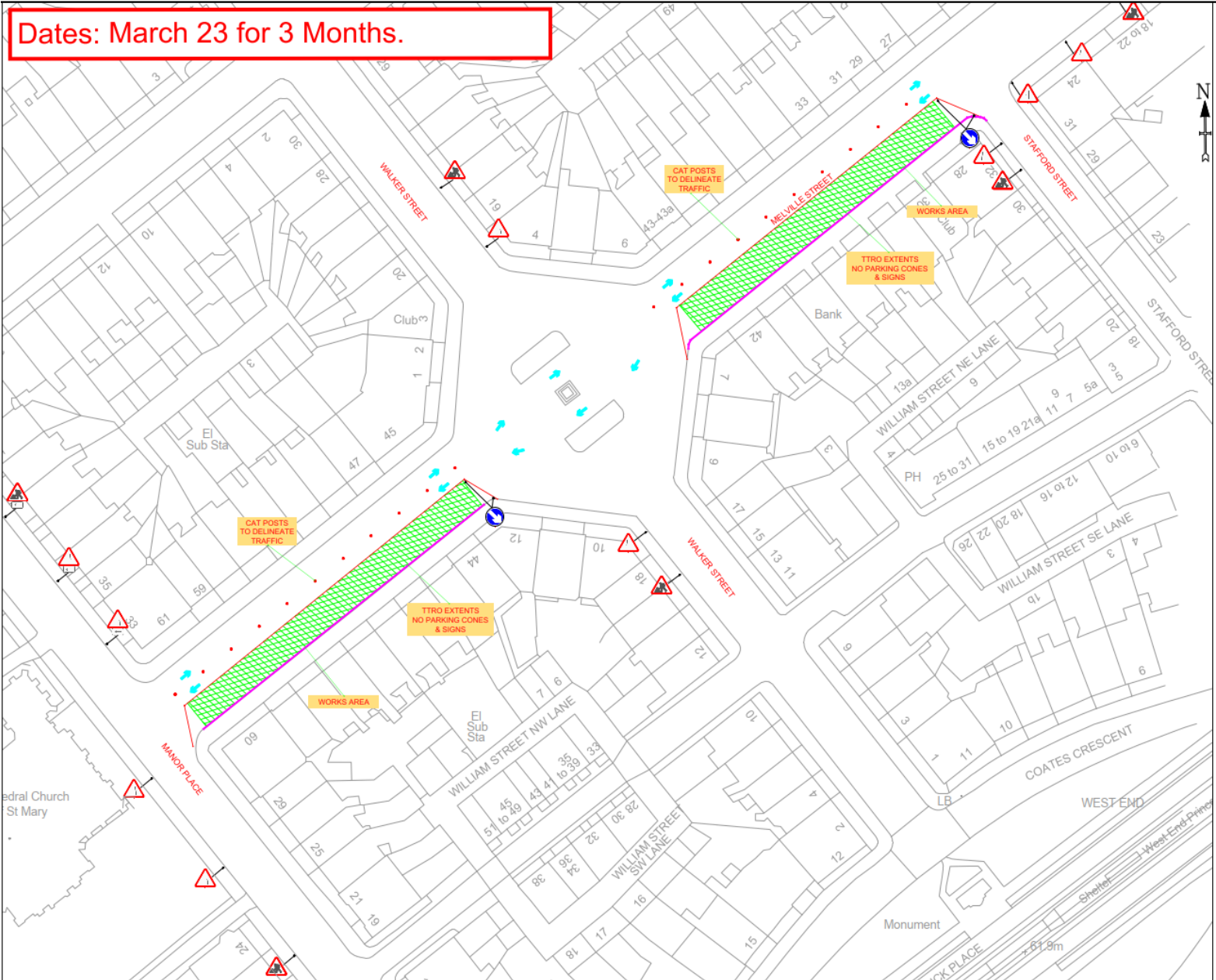
Manor PI to Randolph PI – Traffic Management



Manor PI to Randolph PI – Traffic Management



Manor Pl to Randolph Pl – Traffic Management



Manor PI to Randolph PI - key changes during works

Essential road layout and 'business as usual' changes

We will modify or reposition key items as follows:

- Parking suspension on Manor Place and Melville Street.
- Road modifications/closures to facilitate new construction works as follows:
 - Permanent closure of Manor Place junction with Melville Street
 - Suspension of the parking to facilitate the new construction on Melville Street
 - Introduction of temporary drop/off and pick up zones.
 - Introduction of temporary parking/loading bays.
- We will carry out day-to-day & week-to-week communication and liaison with stakeholders, to ensure the overall disruption is minimized.

Melville Street – Outline Timescales

Works in Melville Street will Commence in July 2022

Outline schedule of the works will be as follows:




- New Cycleway & Footway to north side of Melville Street: July 2022 to December 2022
- New Footway to south side of Melville Street: January 2022 to June 2023
- Replacement of the main road surfacing on Manor Place: January 2023
- Melville Street Side Roads: September 2022 to June 2023
- Replacement of the main road surfacing on Melville Street: May 2023
- Footway & cycleway works in Randolph Place: October 2022 to April 2023

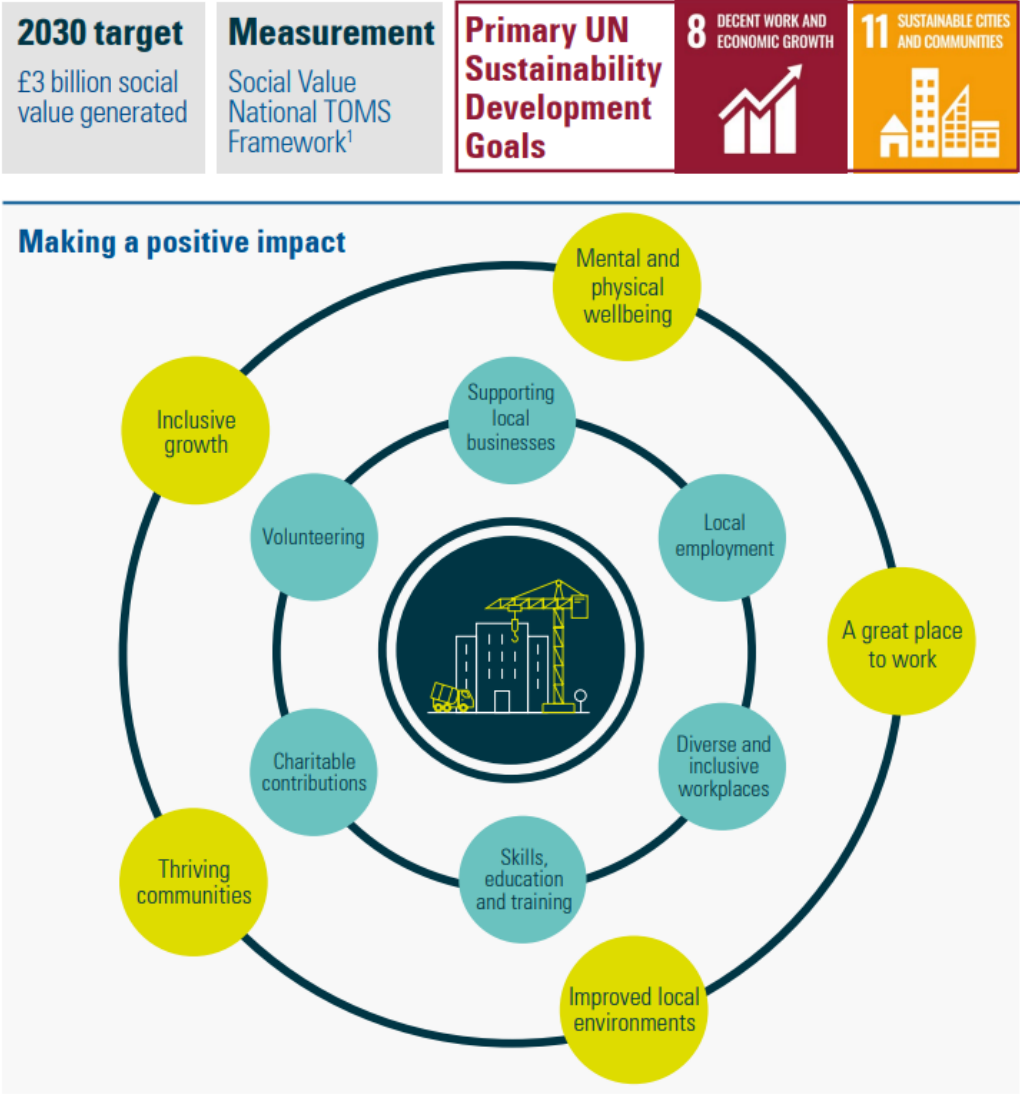
Additional information will be available on the CCWEL website, and in advance communication formats such as emails, social media posts and letter drops.

Social impact & sustainability initiatives

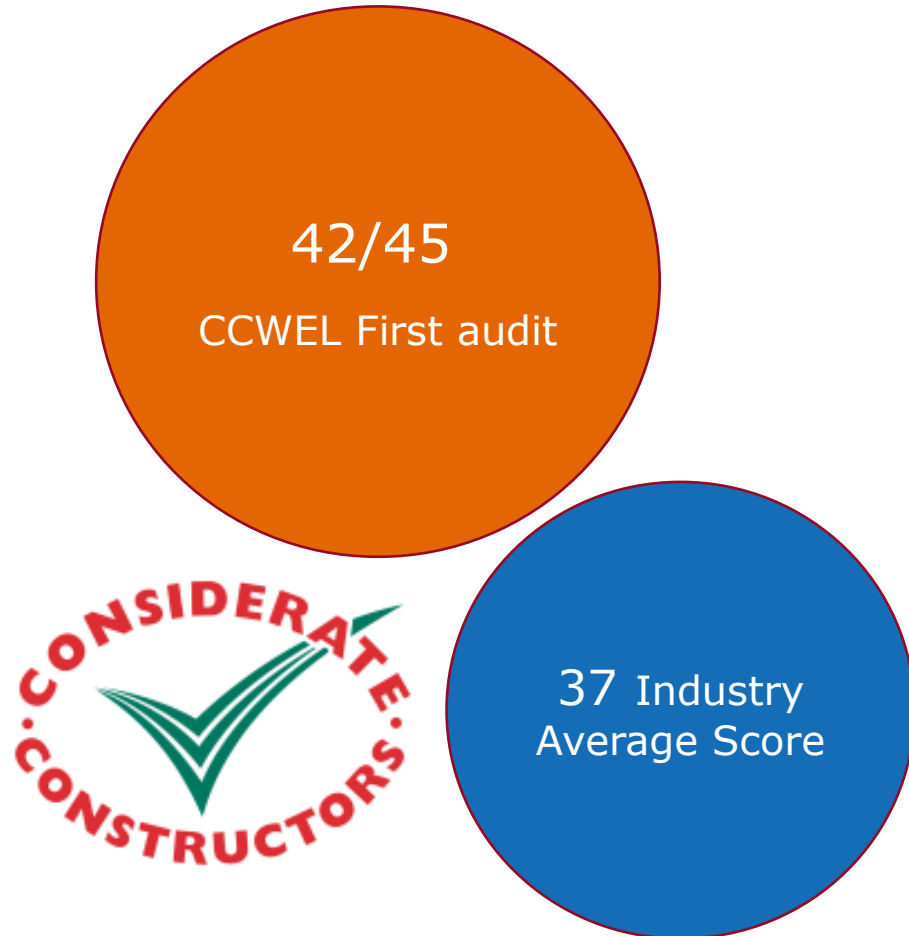
Duncan Gardner
Social Impact Manager
Balfour Beatty

Balfour Beatty Sustainability Strategy

			
	Environment	Materials	Communities
	Responding to climate change and managing our impact on the environment	Choosing the right materials, using less materials and creating value from the materials we no longer need	Improving the prosperity and wellbeing of individuals and communities
2040 Ambitions	Beyond Net Zero Carbon	Generate Zero Waste	Positively Impact More than 1 Million People
	▼	▼	▼
2030 Targets	Achieve our science-based carbon reduction target	40% reduction in waste generated	£3bn social value generated
	▼	▼	▼
	Local Sustainability Action Plans		



Considerate Constructors Scheme



2022 CODE OF CONSIDERATE PRACTICE

Respect the Community

Constructors must manage their impact on their neighbours and the public to support a positive experience, by:

- 1.1 Ensuring courteous and respectful language and behaviour in and around the construction activity.
- 1.2 Providing a safe environment, preventing unnecessary disturbance, and reducing nuisance for the community from their activities.
- 1.3 Proactively maintaining effective engagement with the community to deliver meaningful positive impacts.

Care for the Environment

Constructors must minimise their impact and enhance the natural environment, by:

- 2.1 Prioritising environmental issues to protect the natural environment and minimise negative impacts.
- 2.2 Optimising the use of resources, including minimising carbon throughout the value chain.
- 2.3 Engaging with the community to improve the local environment in a meaningful way.

Value their Workforce

Constructors must create a supportive, inclusive, and healthy workplace, by:

- 3.1 Actively encouraging and supporting an inclusive and diverse workplace.
- 3.2 Proactively supporting safe working, mental and physical wellbeing at work.
- 3.3 Providing workplaces that are well maintained, clean and secure from physical and biological hazards.

Community benefits

- An overview of Balfour Beatty's plan to make a positive Social Impact in the community, during the CCWEL project.



Stage	Description of supplementary benefit
Pre-construction (present – Jan 21)	Identify a social enterprise / catering business, categorised within the 'high' intensity of engagement category.
Construction (post Jan 21)	Provision of advertising space for businesses impacted by CCWEL project.
Construction (post Jan 21)	Donation drives for local foodbank / charity
Construction (post Jan 21)	Virtual Schools engagement – using online platform to engage local pupils in the project through live learning. Themes including civil engineering / project management etc.
Construction (post Jan 21)	Support for CEC to install / maintain flower planters upon sections of route / engaging local community groups to take ownership of planters.
Construction (post Jan 21)	Cycle safety awareness event, engaging CLOCS / FORS to promote cycle safety around plant and heavy fleet. This event will give members of the public the opportunity to sit in a cabin of a typical plant/fleet vehicle to raise awareness of blind spots / cycle safety
Construction (post Jan 21)	Free cycle maintenance sessions for local residents
Construction (post Jan 21)	Cargo Bikes – for use during construction phase to reduce vehicle use

Clean Air Day 2022



- Dr Bike session
- Police Scotland Bike Marking
- Cycle Safety sessions for local school kids
- Sustainable construction showcase
- Bling your bike stall
- Cargo bike movement

Supporting Edinburgh Food Project

- First collection ready for delivery
- Further collections planned over project lifespan



E-Bikes for site transport



- E-bikes on site for staff to access the work sites
- Reducing strain on local road network and reducing project carbon footprint
- Tracking and reporting of miles saved
- Promoting other sustainable travel options (train, tram)

Education engagement programme

- Primary school poster competition
- Careers and STEM activities for local secondary pupils



Upcoming: 'Pollinator Highway' planter workshops



- Upcycling sessions to turn waste pallets into planters for use in the community
- Supported by the Balfour Beatty team and delivered with local community groups

What matters to you?

- We want to know what matters to you in your community and where we might be able to support ideas, organisations or projects are happening in the community.
- ccwel@edinburgh.gov.uk FAO Duncan Gardner

Questions

Communications & engagement

Eileen Hewitt

Transport Officer, Active Travel

The City of Edinburgh Council

Local community engagement



Important to ensure good communication between the Council, Balfour Beatty and the community

- Let you know about key dates and construction plans in advance
- Use door to door letter drops, project updates, email, website, engagement sessions
- Keep your local councillors and Community Council informed
- Encourage your community to be involved through schools, community organisations and businesses

Feedback and raising issues

- We welcome your feedback at all times
- Please email us at ccwel@edinburgh.gov.uk

Campaign overview



Since the start of CCWEL construction we have been running a campaign to help:

- minimise disruption
- keep people informed on progress
- support local residents and businesses

We will continue to:

- where appropriate, run an 'open for business' campaign
- share information on traffic management and construction to help minimise disruption
- Longer term - encourage more people to choose active travel to visit and move through the area

Activity

- Website, media, social media, community media advertising, lamppost wraps, banners to dress construction site fencing.



edinburgh.gov.uk/ccwel



Questions

Thank you