

# North West Locality Committee

6.30pm, Wednesday, 30 January 2019

## Objections to Traffic Regulation Order TRO/17/59 Proposed Parking Restrictions – Shore Road, South Queensferry

<b>Item number</b>	8.9
<b>Report number</b>	
<b>Executive/routine</b>	
<b>Wards</b>	1 Almond
<b>Council Commitments</b>	

### Executive Summary

In recent years Port Edgar Marina have approached the City of Edinburgh Council requesting waiting restrictions on Shore Road. The proposed introduction of double yellow line waiting restrictions should help increase visibility and safe passing areas.

This report details objections to Traffic Regulation Order TRO/17/59 which would introduce parking restrictions in Shore Road. It informs Committee of the nine objections and sixteen in support were received following the public advertising stage and seeks approval to make the Order with amendments. The concerns of the objectors and the Council's response are set out in Appendix 1.

## Objections to Traffic Regulation Order TRO/17/59 Proposed Parking Restrictions – Shore Road, South Queensferry

### 1. Recommendations

---

- 1.1 It is recommended that the Committee:
  - 1.1.1 notes the objections received to the Traffic Regulation Order; and
  - 1.1.2 gives approval to make the Traffic Regulation Order as amended.

### 2. Background

---

- 2.1 Port Edgar Marina approached The City of Edinburgh Council regarding issues with access and egress along Shore Road. Poorly parked vehicles made travelling along Shore Road quite difficult. The Marina has expanded in recent years and frequently gets a lot of visitors, delivery vehicles and ships towed.

### 3. Main report

---

- 3.1 The TRO to make the necessary amendments was advertised from 20<sup>th</sup> October 2017 until 10<sup>th</sup> November 2017. Nine letters of objections were received and these are summarised in Appendix 1.
- 3.2 North West Locality Roads team met with Port Edgar Marina representatives to look at what parking restrictions were essential for the businesses. The initial scope of proposed Waiting Restrictions included a significant length of double yellow lines at the east end of the housing area. Following objections received, the revised proposal can be found in Appendix 2, removing a total of 40m of proposed restrictions, 35 to the east and 5 to the west of the cottages.
- 3.3 All nine objectors were written to, with the amended plan and asked whether they wished to remove their objections in light of the proposed amendments. None were willing to do so. The objectors were mainly concerned with the lack of alternative parking for residents and the local library. A number of them raised the issue of the Marina illegally putting down double yellow lines.

- 3.4 Sixteen letters of support were received for the proposed restrictions. These were from mostly businesses at the Marina but some residents also wrote in with their support.
- 3.5 The introduction of the double yellow lines where the road narrows just west of the cottages will prohibit long term parking. The Marina has provided photos showing how poorly parked vehicles have greatly impeded access.
- 3.6 In light of the level of objections received during the public advertising stage committee are asked to approve a revised Traffic Regulation Order (TRO/15/50) minus the sections marked in red on the attached plan in Appendix 2.

#### 4. Measures of success

---

- 4.1 Not applicable

#### 5. Financial impact

---

- 5.1 The cost of undertaking the necessary Order will be met from within existing Transport budgets.

#### 6. Risk, policy, compliance and governance impact

---

- 6.1 It is considered that there are no known risk, policy, compliance or governance impacts arising from this report.

#### 7. Equalities impact

---

- 7.1 Consideration has been given to the relevance of the Equalities Act 2010 and there will be no negative impact on those covered by the Protected Characteristics.

#### 8. Sustainability impact

---

- 8.1 The recommendations within this report do not have any adverse impact on carbon impacts, adaptation to climate change or sustainable development.

#### 9. Consultation and engagement

---

- 9.1 These proposals have been advertised in the local media and through on-street public notices, in accordance with the relevant legislation.
- 9.2 Statutory bodies representing those the proposals could affect, including Community Councils, the emergency services, and local Ward Councillors have received advisory letters. Details were also published on the Council and Scottish Government websites.

## 10. Background reading/external references

---

Correspondence from objectors.

### **Paul Lawrence**

Executive Director of Place

Contact: Peter Strong, North West Locality Manager

E-mail: [peter.strong@edinburgh.gov.uk](mailto:peter.strong@edinburgh.gov.uk) | Tel: 0131 529 5005

## 11. Appendices

---

11.1 Appendix 1 – Details of the objections.

11.2 Appendix 2 - Plans of revised restrictions

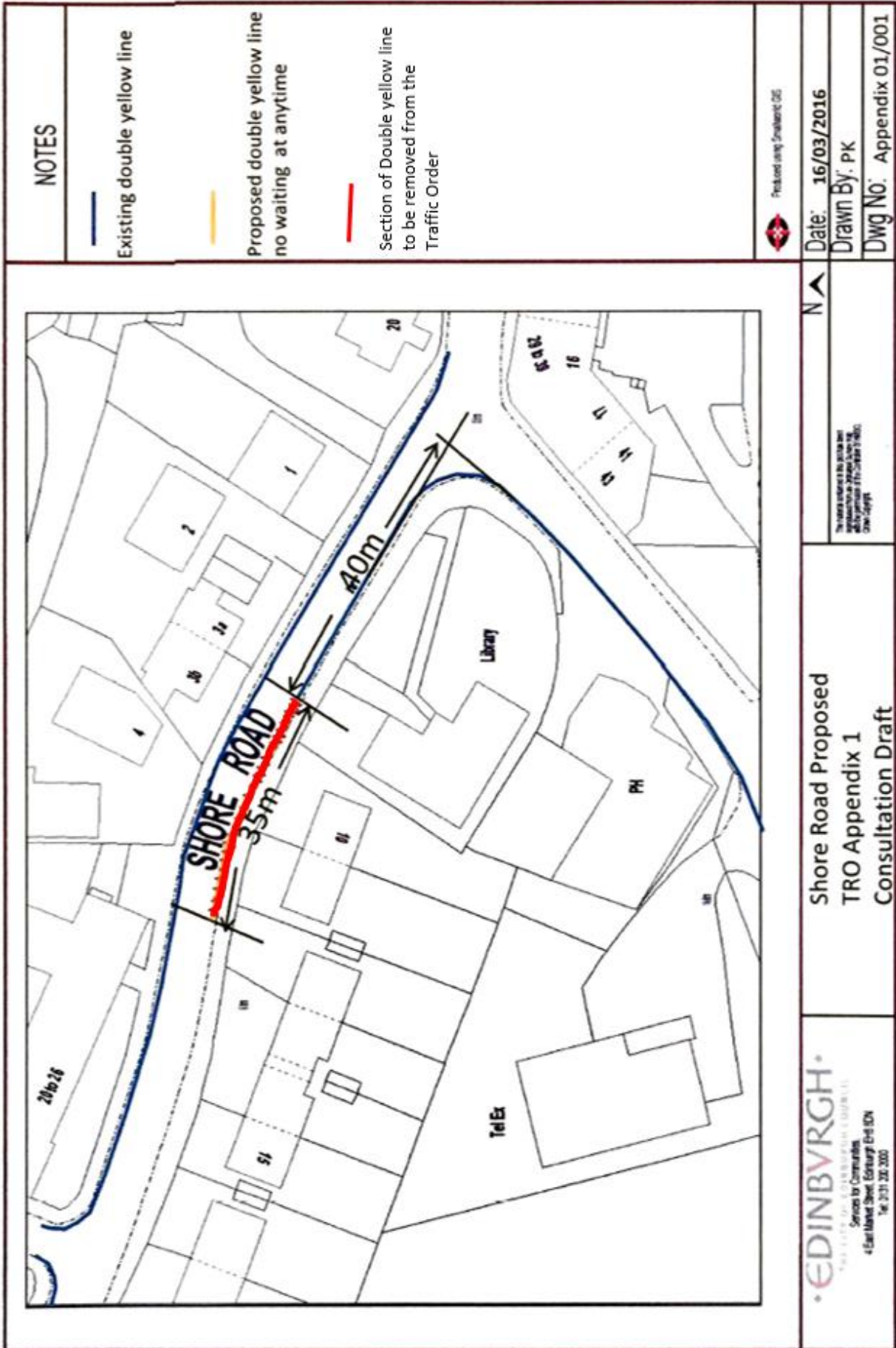
## Objections to Proposed Introduction of Waiting Restrictions – Shore Road

### Appendix 1 – Detailed Representations/Objections - Responses to Issues Raised

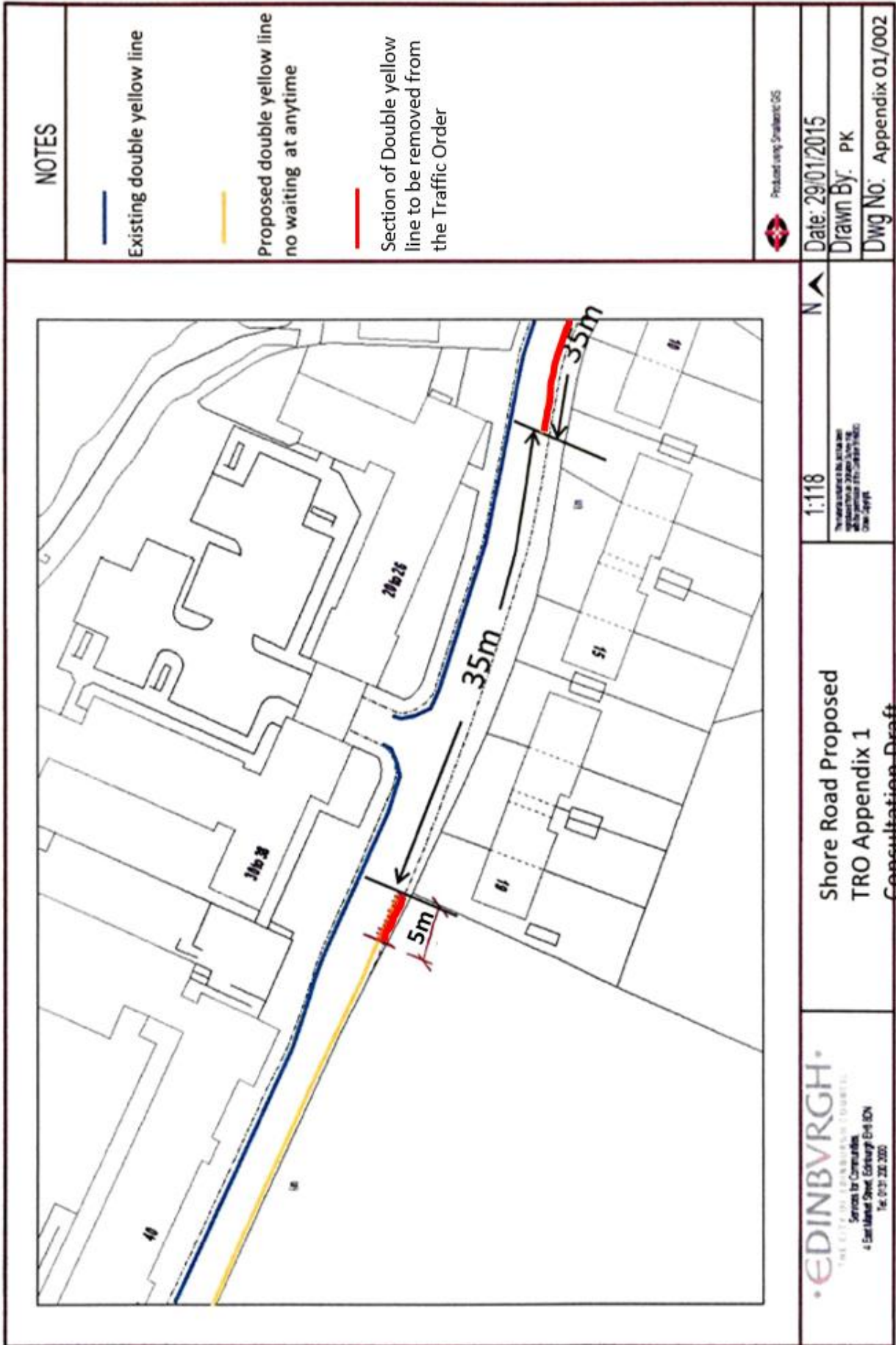
	Objection	No of objectors
1	Loss of parking (residents)	8 – Acknowledged - amended plan frees up an extra 40m of parking, approximately 8 cars
2	Loss of parking (library & local businesses on Hopetoun Road)	8 – Acknowledged - amended plan frees up an extra 40m of parking, approximately 8 cars
3	Illegal DYLS caused parking issues and driver frustration or increased speed	4 – Acknowledged the double yellow lines were put down without permission by the Marina and were removed
4	Loss of parking at the Marina which was previously available to residents	1 – The Marina have said the residents and locals are welcome to use their car park
5	Never saw any issue with access for large vehicles such a construction traffic, delivery vehicles, buses and coaches	3 – Acknowledged however we have photographic evidence of poorly parked vehicles causing an obstruction.
6	No safety issues	1 – Discharged - photos provided by the Marina show poor parking causing potential safety issues
7	24 hour restrictions “too much”	1 – Discharged – due to the seasonal and variable operating hours of the Marina, and associated businesses, the introduction of a 24 hour restriction is deemed the most practical.

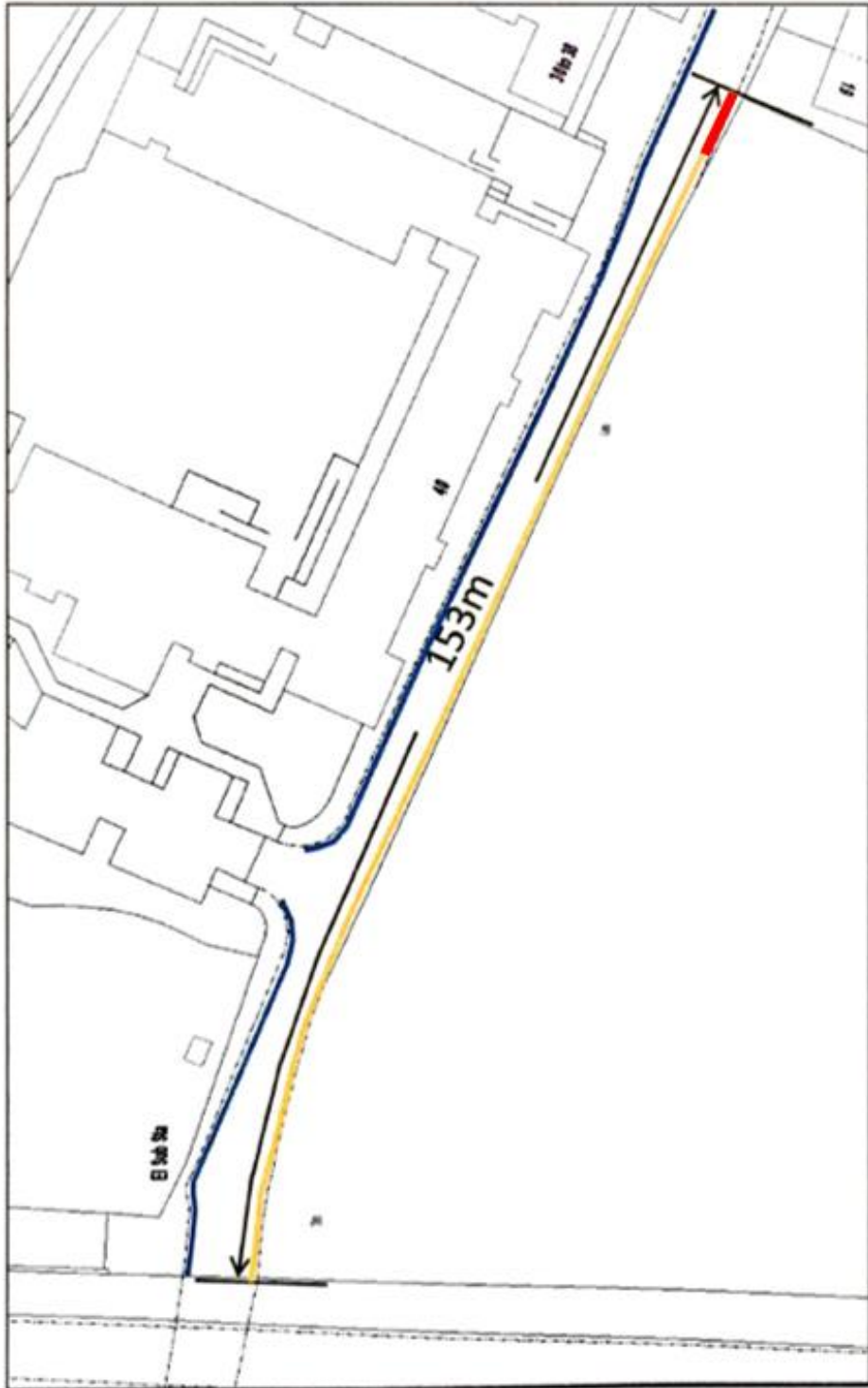
Total number of objectors:- 9

Appendix 2 - Plan of the revised restrictions

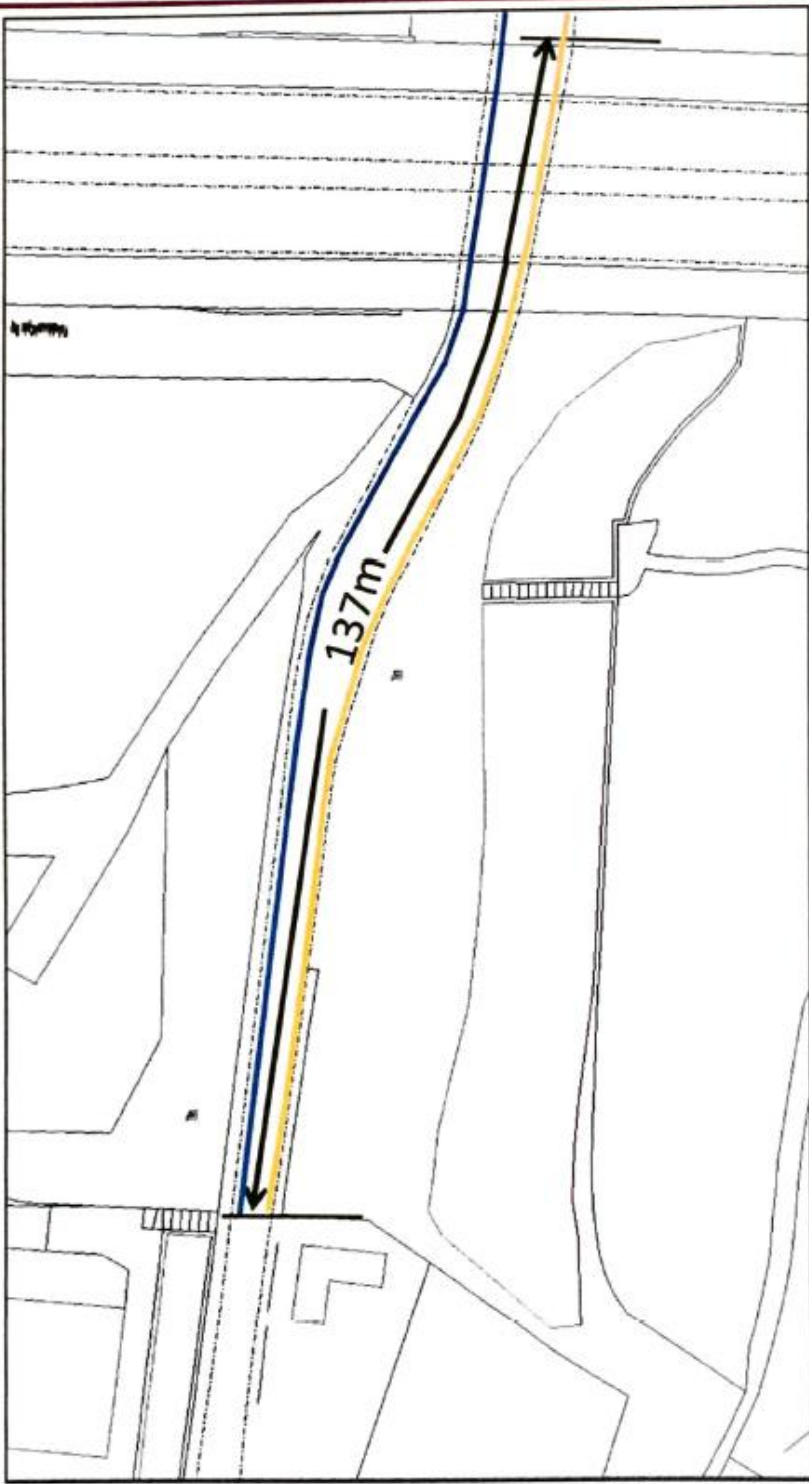






<p><b>NOTES</b></p> <ul style="list-style-type: none"> <li><span style="color: blue;">—</span> Existing double yellow line</li> <li><span style="color: orange;">—</span> Proposed double yellow line no waiting at anytime</li> <li><span style="color: red;">—</span> Section of Double yellow line to be removed from the Traffic Order</li> </ul>		<p>Produced using SmartDraw 206</p>	<p>Date: 29/01/2015</p>	<p>Drawn By: PK</p>	<p>Dwg No: Appendix 01/003</p>
<p style="text-align: center;">1:118</p> <p style="text-align: center; font-size: small;">The views expressed in this plan are approximate and should not be relied upon for construction purposes.</p>		<p style="text-align: center;">N</p>		<p style="text-align: center;">Shore Road Proposed TRO Appendix 1 Consultation Draft</p>	
<p style="text-align: center;"><b>• EDINBURGH •</b> THE CITY OF EDINBURGH COUNCIL Services for Communities 4 East Market Street, Edinburgh EH1 1DN Tel: 0131 220 2000</p>					



<p><b>NOTES</b></p>	<p>Existing double yellow line</p> <p>Proposed double yellow line no waiting at anytime</p>	<p>Produced using SmartDraw GIS</p>	<p>Date: 29/01/2015</p>	<p>Drawn By: PK</p>	<p>Dwg No: Appendix 01/004</p>
		<p>1:118</p> <p><small>The views and recommendations in this plan are those of the City of Edinburgh Council and are not intended to be used for any other purpose without the prior written consent of the Council.</small></p>	<p>Shore Road Proposed TRO Appendix 1 Consultation Draft</p>		
<p>North West Locality Committee - 30 January 2019</p>		<p>•EDINBURGH• <small>THE CITY OF EDINBURGH COUNCIL</small> Services for Communities 4 East Market Street, Edinburgh EH8 5BN Tel: 0131 220 2000</p>			